


APP CRS	Rwy Ldg	<b>5700</b>
<b>196°</b>	TDZE	<b>54</b>
	Apt Elev	<b>56</b>

# RNAV (RNP) Z RWY 20R

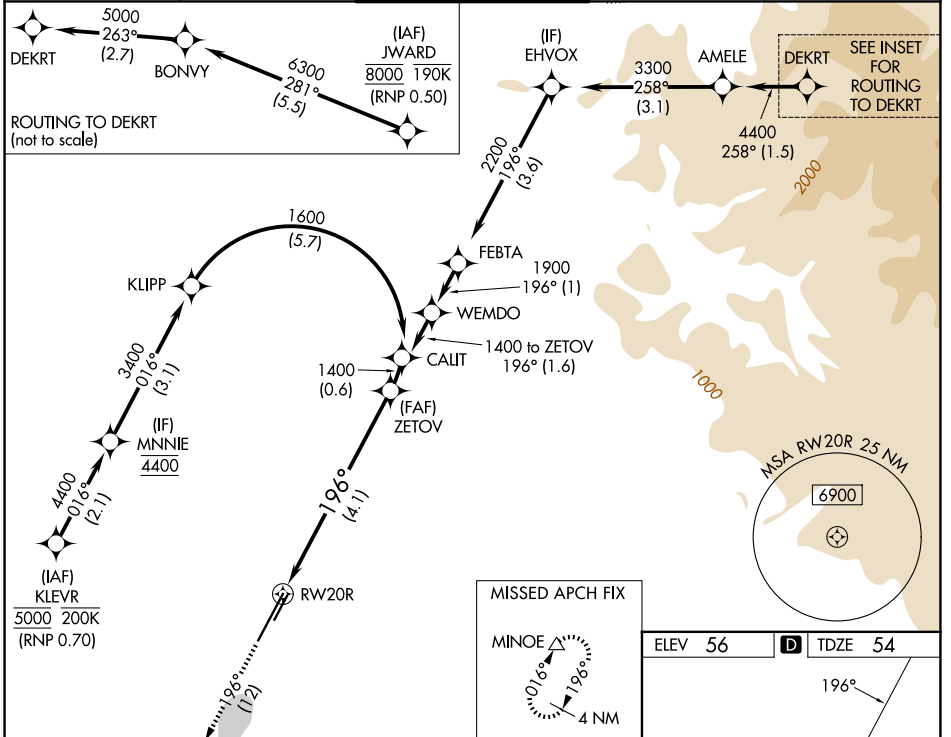
JOHN WAYNE/ORANGE COUNTY (SNA)

RNP AR APCH - GPS. Authorization required. From JWARD: min RNP 0.50. From KLEVR, RF, min RNP 0.70.

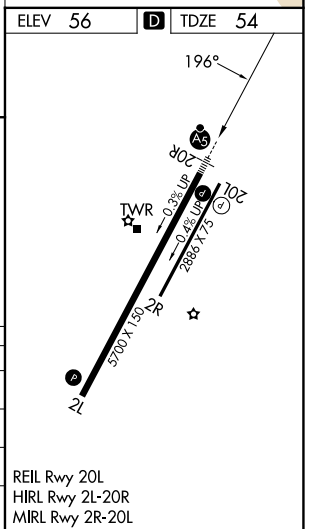
For uncompensated Baro-VNAV systems, procedure NA below 5°C or above 54°C.

MALSR  MISSED APPROACH: Climb to 3000 on track 196° to MINOE and hold, continue climb-in-hold.

D-ATIS <b>126.0</b>	SOCAL APP CON <b>121.3 263.1</b>	JOHN WAYNE TOWER ★ <b>126.8 (CTAF) 0 343.625</b>	GND CON <b>120.8</b>	UNICOM <b>122.95</b>
------------------------	-------------------------------------	---	-------------------------	-------------------------



3000 ↑ fr 196°	MINOE △	VGSI and RNAV glidepath not coincident (VGSI Angle 3.00/TCH 68). See planview for multiple IF locations.	ZETOV 1400
RW20R		196°	1400
		4.1 NM	GP 3.00° TCH 51
CATEGORY	A	B	C
RNP 0.11 DA		376/26	322 (400-½)
RNP 0.15 DA		562/55	508 (600-1)
RNP 0.30 DA		618-1¼	564 (600-1¼)
<b>AUTHORIZATION REQUIRED</b>			



SW-3, 14 MAY 2026 to 11 JUN 2026

SW-3, 14 MAY 2026 to 11 JUN 2026