

RUKKI ONE ARRIVAL(RNAV)

AL-377 (FAA)

SW-3, 14 MAY 2026 to 11 JUN 2026

ARRIVAL ROUTE DESCRIPTION

TCUPS TRANSITION (TCUPS.RUKKI1)

TILT TRANSITION (TILT.RUKKI1)

From RUKKI on track 108° to SCANN, then on track 109° to cross BAUBB between 11000 and 13000.

LANDING RUNWAY 2L: From BAUBB on track 099° to cross JJAWS at or below 6000, then on track 092° to cross PUZZL at 5000 and at 220K, then on track 017° to cross MINOE at 3000 and at 210K.

Expect RNAV (RNP) Z RWY 2L approach or RADAR vectors to final approach course.

LANDING RUNWAY 20R: From BAUBB on track 089° to cross STYFF at or below 9000, then on track 080° to cross KAYNN at or below 7000, then on track 057° to cross LAXBB at 5000 and at 200K, then on track 044° to cross KLEVR at 5000 and at 200K, then on track 016°. Expect RNAV (RNP) Z RWY 20R approach or RADAR vectors to final approach course.

LOST COMMUNICATIONS

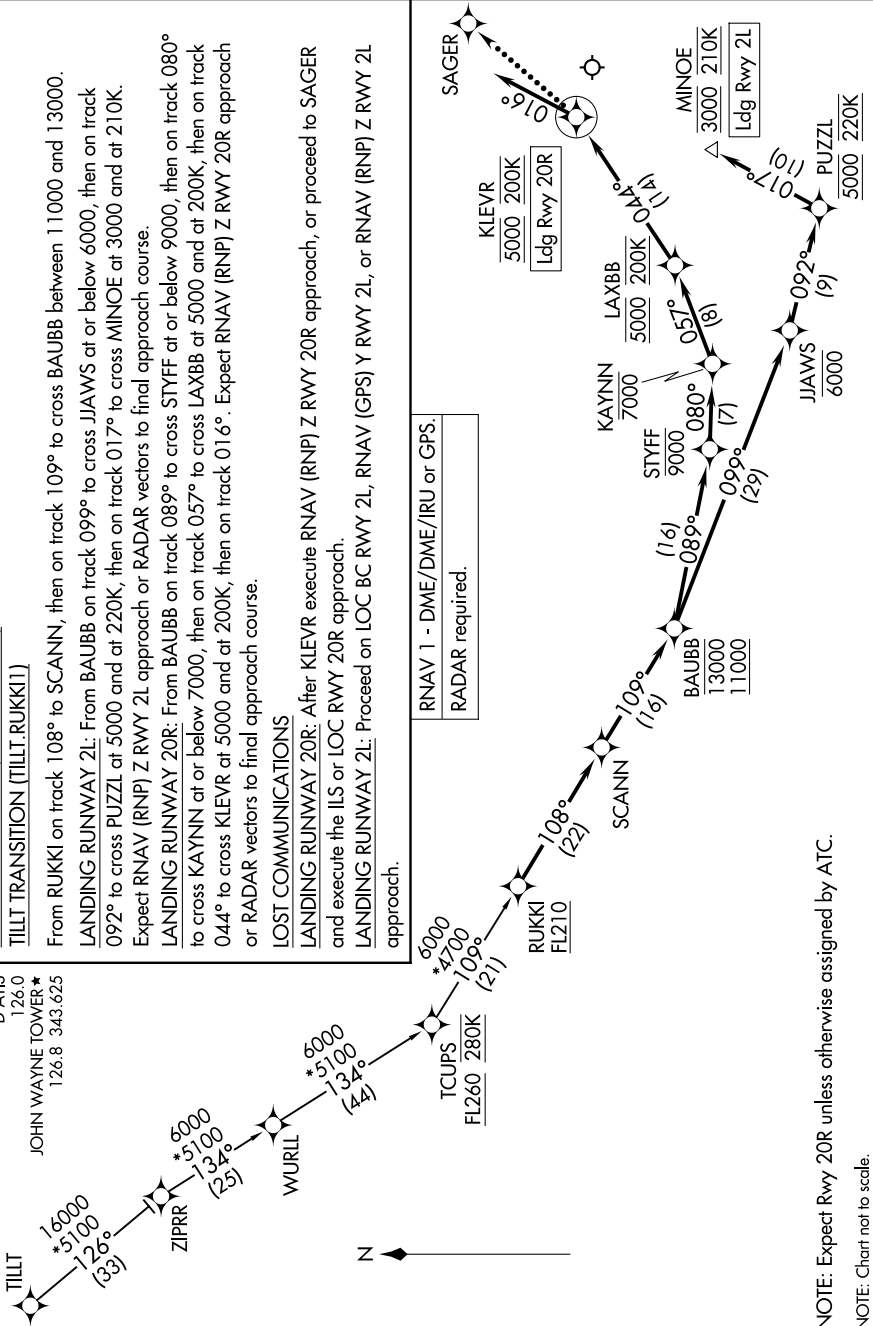
LANDING RUNWAY 20R: After KLEVR execute RNAV (RNP) Z RWY 20R approach, or proceed to SAGER and execute the ILS or LOC RWY 20R approach.

LANDING RUNWAY 2L: Proceed on LOC BC RWY 2L, RNAV (GPS) Y RWY 2L, or RNAV (RNP) Z RWY 2L approach.

RNAV 1 - DME/DME/IRU or GPS.

RADAR required.

SOCAL APP CON
127.4 263.025
D-ATIS
126.0
JOHN WAYNE TOWER *
126.8 343.625



NOTE: Expect Rwy 20R unless otherwise assigned by ATC.

NOTE: Chart not to scale.

SW-3, 14 MAY 2026 to 11 JUN 2026

RUKKI ONE ARRIVAL (RNAV)