

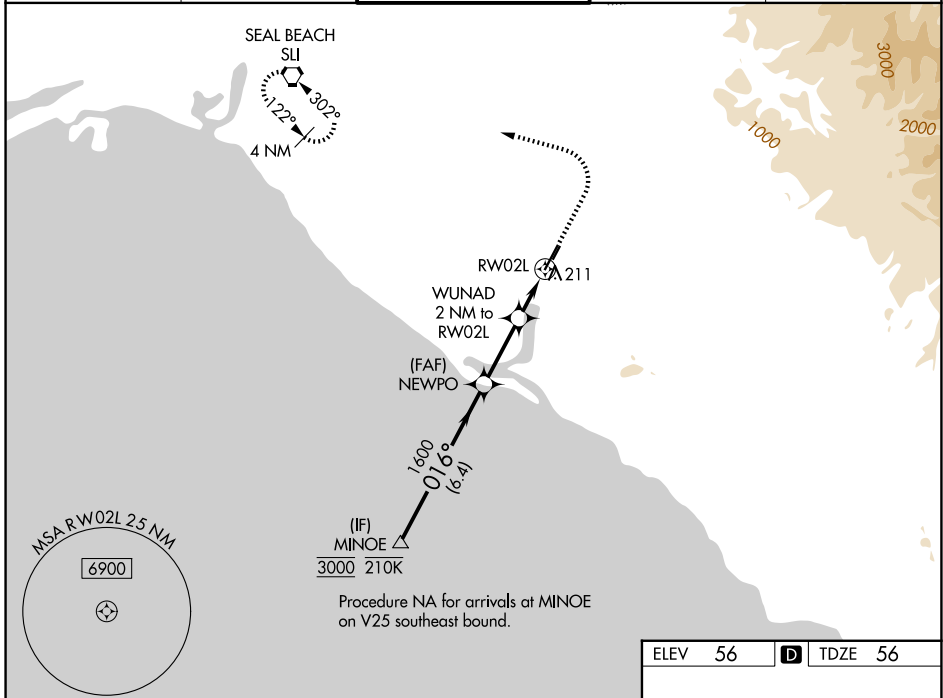
WAAS CH 93847 W02A	APP CRS 016°	Rwy Ldg TDZE Apt Elev	5700 56 56
--	------------------------	-----------------------------	---------------------------------------

RNAV (GPS) Y RWY 2L

JOHN WAYNE/ORANGE COUNTY (SNA)

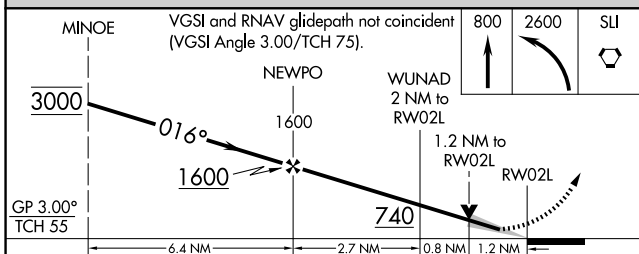
RNP APCH - GPS.		MISSED APPROACH: Climb to 800 then climbing left turn to 2600 direct SLI VORTAC and hold.	
▼	Circling Rwy 20L NA at night. For uncompensated Baro-VNAV systems, LNAV/VNAV NA below 5°C or above 54°C.		

D-ATIS 126.0	SOCAL APP CON 121.3 263.1	JOHN WAYNE TOWER * 126.8 (CTAF) 0 343.625	GND CON 120.8	UNICOM 122.95
------------------------	-------------------------------------	---	-------------------------	-------------------------

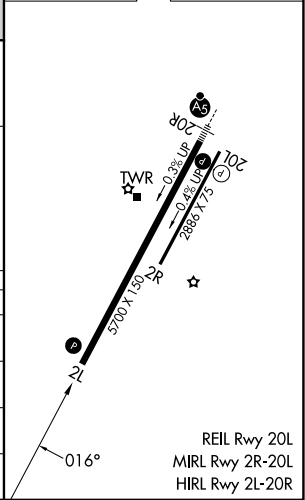


Procedure NA for arrivals at MINOE on V25 southeast bound.

ELEV 56	D TDZE 56
---------	------------------



CATEGORY	A	B	C	D
LPV DA		306-3/4	250 (300-3/4)	
LNAV/VNAV DA		380-1	324 (400-1)	
LNAV MDA	520-1	464 (500-1)	520-13/8	464 (500-13/8)
CIRCLING	640-1	584 (600-1)	840-2 1/4 784 (800-2 1/4)	1180-3 1124 (1200-3)



SW-3, 14 MAY 2026 to 11 JUN 2026

SW-3, 14 MAY 2026 to 11 JUN 2026

REIL Rwy 20L
MRL Rwy 2R-20L
HIRL Rwy 2L-20R