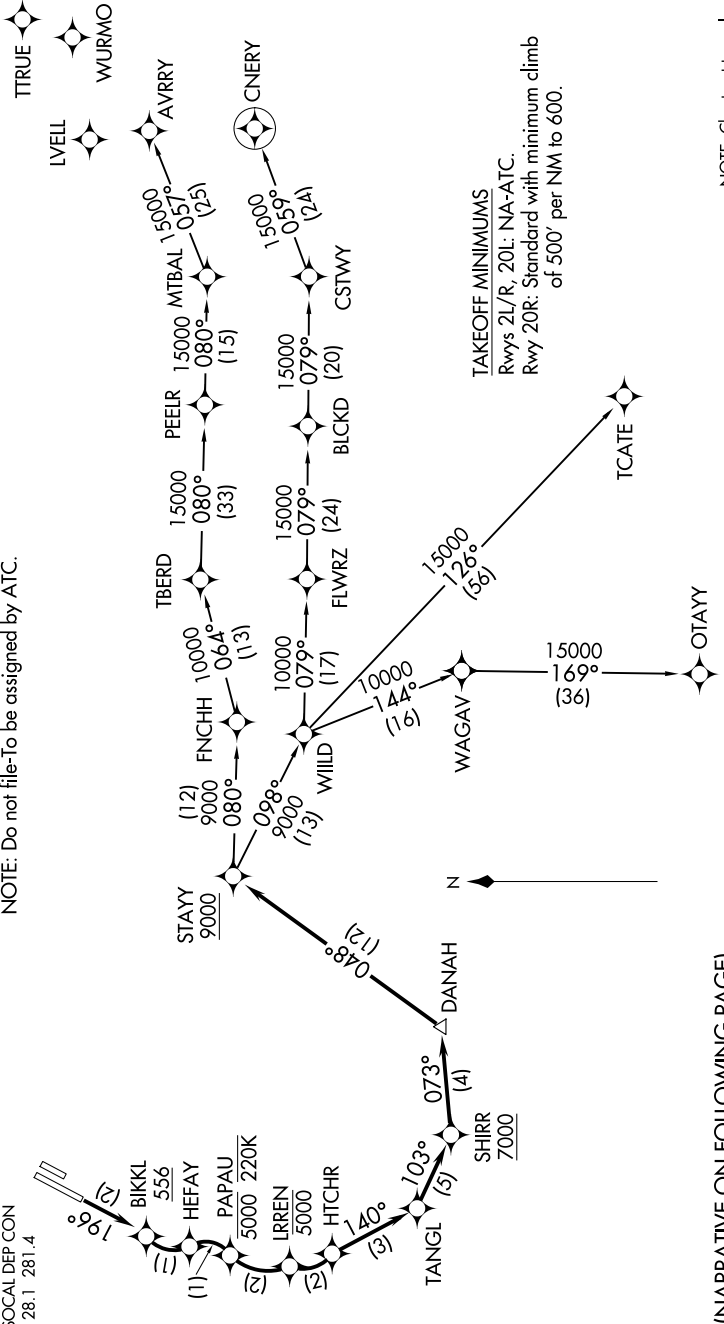


**TOP ALTITUDE:
13000**

NOTE: RNP 1.
 NOTE: RF required.
 NOTE: GPS required.
 NOTE: RADAR required.
 NOTE: Turbojet only.
 NOTE: Parachute jumping all hours, 14000 and below, north of route between STAYY and FNCHH.
 NOTE: Do not file-To be assigned by ATC.

D-ATIS
 126.0
 CLNC DEL
 118.0
 CPDC
 GND CON
 120.8
 JOHN WAYNE TOWER *
 126.8 343.625
 SOCIAL DEP CON
 128.1 281.4



NOTE: Chart not to scale.

(NARRATIVE ON FOLLOWING PAGE)



DEPARTURE ROUTE DESCRIPTION

TAKEOFF RUNWAY 20R: Climb on course 196° to cross BIKKL at or above 556, then left turn to HEFAY, then right turn to cross PAPAU at or below 5000 and at or below 220K, then left turn to cross LRREN at or below 5000, then left turn to HTCHR, then on track 140° to TANGL, then on track 103° to cross SHIRR at or above 7000, then on track 073° to DANAH, then on track 048° to cross STAYY at or above 9000, thence. . . .

. . . .on (transition). Maintain 13000. Expect filed altitude 10 minutes after departure.

AVRRY TRANSITION (STAYY4.AVRRY)

CNERY TRANSITION (STAYY4.CNERY)

OTAYY TRANSITION (STAYY4.OTAYY)

TCATE TRANSITION (STAYY4.TCATE)

SW-3, 14 MAY 2026 to 11 JUN 2026

SW-3, 14 MAY 2026 to 11 JUN 2026