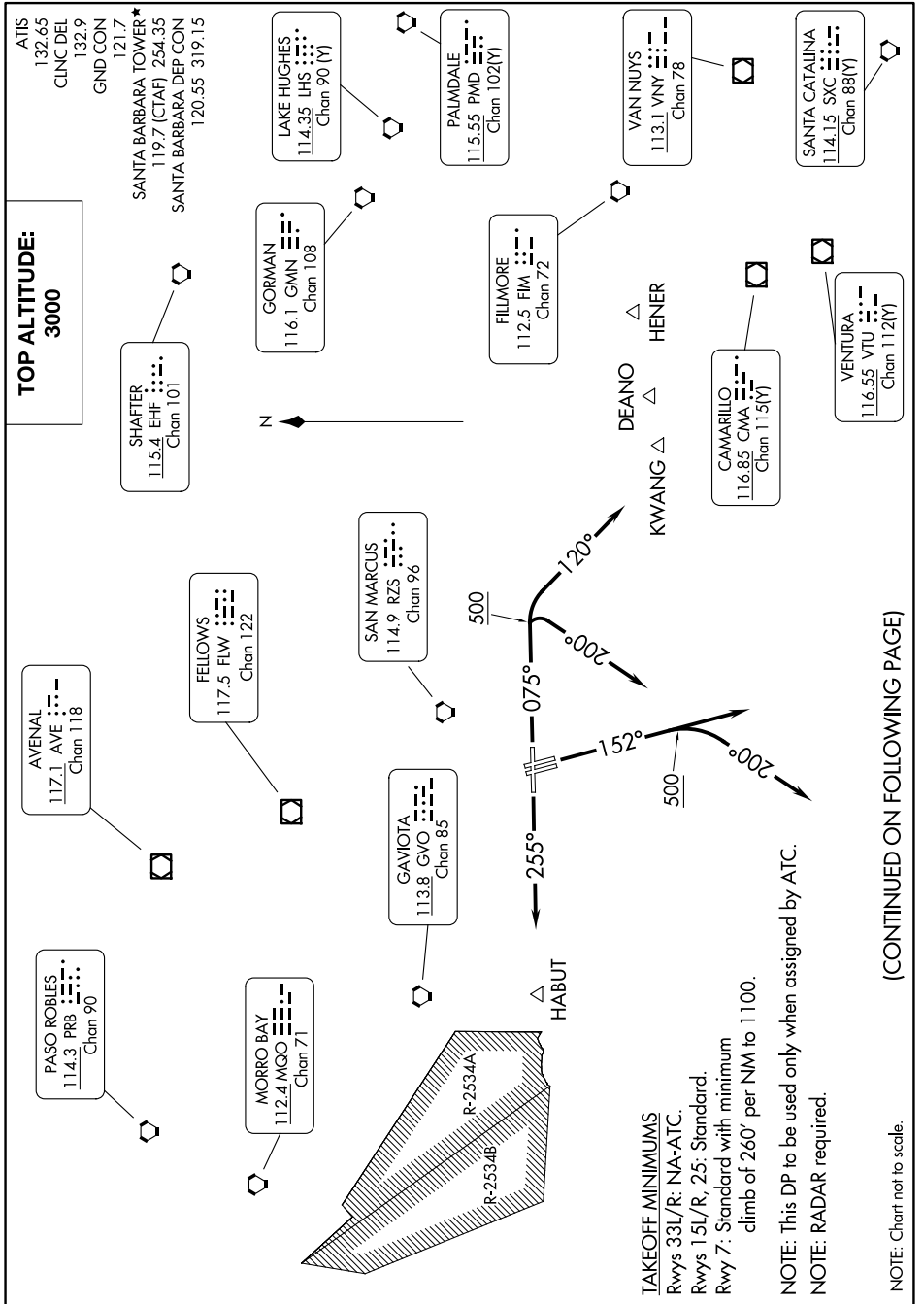


SANTA BARBARA FIVE DEPARTURE

AL-378 (FAA)

SANTA BARBARA MUNI (SBA)
SANTA BARBARA, CALIFORNIA

SW-3, 14 MAY 2026 to 11 JUN 2026



SANTA BARBARA FIVE DEPARTURE

SANTA BARBARA, CALIFORNIA
SANTA BARBARA MUNI (SBA)

SW-3, 14 MAY 2026 to 11 JUN 2026

(CONTINUED ON FOLLOWING PAGE)

NOTE: Chart not to scale.

TAKEOFF MINIMUMS
Rwys 33L/R: NA-ATC.

Rwys 15L/R, 25: Standard.

Rwy 7: Standard with minimum
climb of 260' per NM to 1100.

NOTE: This DP to be used only when assigned by ATC.

NOTE: RADAR required.



DEPARTURE ROUTE DESCRIPTION

SOUTH OR EAST ROUTE OF FLIGHT:

TAKEOFF RUNWAY 7: Climb heading 075° to 500, then climbing right turn on heading 120°. Thence. . . .

TAKEOFF RUNWAYS 15L/15R: Climb heading 152°. Thence. . . .

TAKEOFF RUNWAY 25: Climb heading 255°. Thence. . . .

. . . .On RADAR vectors, maintain 3000. Expect further clearance to filed altitude 5 minutes after departure.

NORTH OR WEST ROUTE OF FLIGHT:

TAKEOFF RUNWAY 7: Climb heading 075° to 500, then climbing right turn on heading 200°. Thence. . . .

TAKEOFF RUNWAYS 15L/R: Climb heading 152° to 500, then climbing right turn on heading 200°. Thence. . . .

TAKEOFF RUNWAY 25: Climb heading 255°. Thence. . . .

. . . .On RADAR vectors, maintain 3000. Expect further clearance to filed altitude 5 minutes after departure.

SW-3, 14 MAY 2026 to 11 JUN 2026

SW-3, 14 MAY 2026 to 11 JUN 2026