

RNAV (GPS) RWY 26

WAAS CH 95990 W26A	APCH CRS 259°	Rwy Idg TDZE Arprt Elev 9503 -46 -42
----------------------------------------	-------------------------	--------------------------------------------------------------------------

[USN]

EL CENTRO NAF (VRACIU FLD) (KNJK)

RNP APCH
 ▼ Circling to Rwy 30 not authorized at night.
 When tower closed, increase visibility to 1 mile.

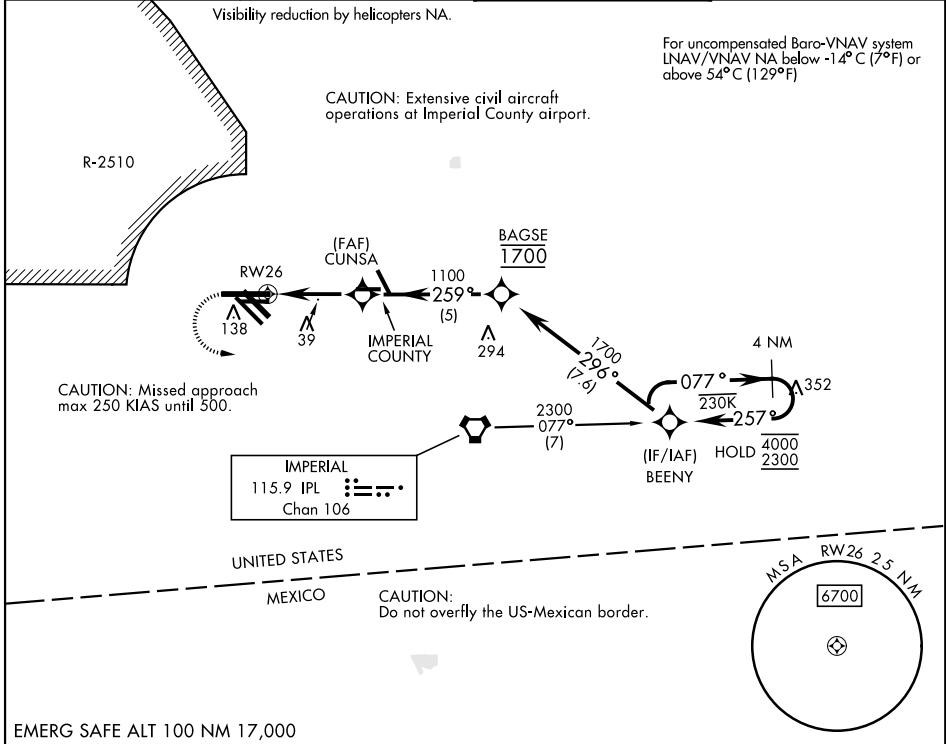
MISSED APPROACH: Climb to 500, then climbing left turn to 2300 direct BEENY and hold.

ATIS ★
269.275

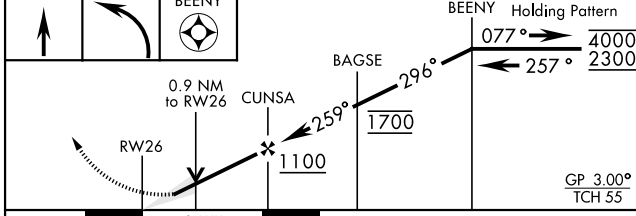
APP CON
132.275 292.2

TOWER ★
119.1 360.2

GND CON
121.9 254.35

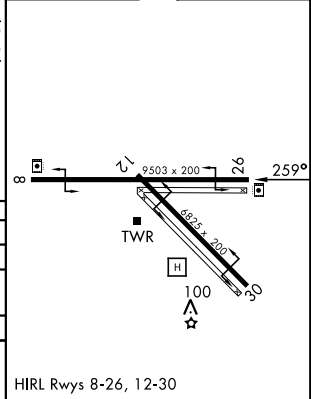


EMERG SAFE ALT 100 NM 17,000



ELEV -42	TDZE -46
----------	----------

CATEGORY	A	B	C	D
LPV DA	206-¾	252	(300-¾)	
LNAV/VNAV DA	204-¾	250	(300-¾)	214-¾ 260 (300-¾)
LNAV MDA	300-1	346	(400-1)	
CIRCLING	480-1 522 (600-1)		480-1½ 522 (600-1½)	520-2 562 (600-2)



RNAV (GPS) RWY 26

SW-3, 14 MAY 2026 to 11 JUN 2026

SW-3, 14 MAY 2026 to 11 JUN 2026