

EL CENTRO, CALIFORNIA

RNAV (GPS) RWY 8

WAAS CH 89932 W08A	APCH CRS 079°	Rwy ldg TDZE Arpt Elev	9503 -46 -42
---------------------------------	-------------------------	------------------------------	---

(USN)

EL CENTRO NAF (VRACIU FLD) (KNJK)

RNP APCH

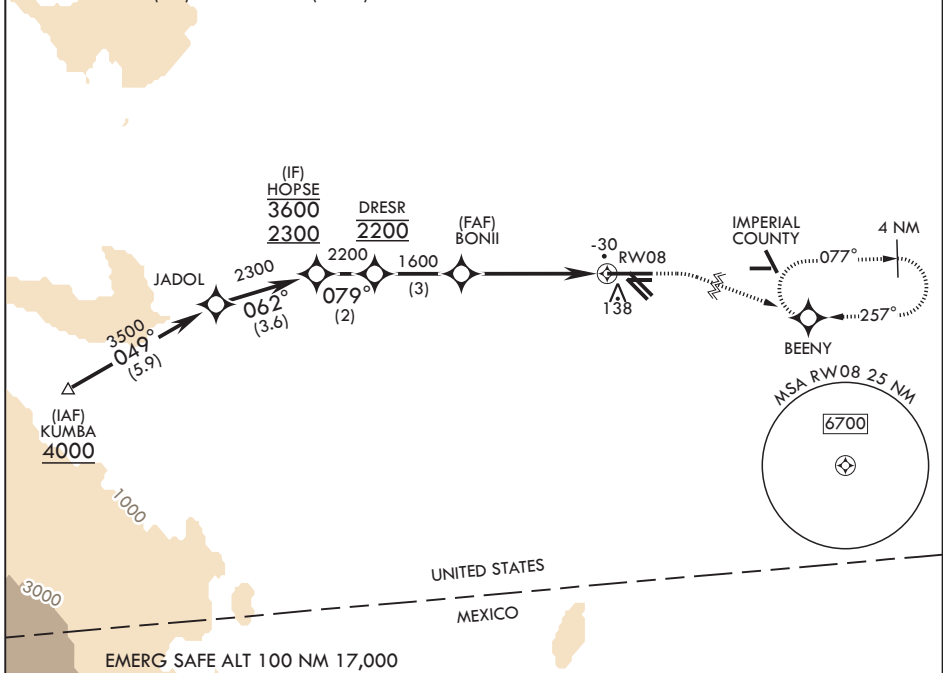
⚠ Circling visibility reduction by helicopters NA.
When tower closed, increase visibility to 1 mile.

MISSED APPROACH: Climb to 800, then climbing right turn to 2400 direct BEENY and hold.

ATIS* 269.275	APP CON/DEP CON 132.275 292.2	TOWER* 119.1 360.2	GND CON 121.9 254.35
-------------------------	---	------------------------------	--------------------------------

Circling to Rwy 30 NA at night.

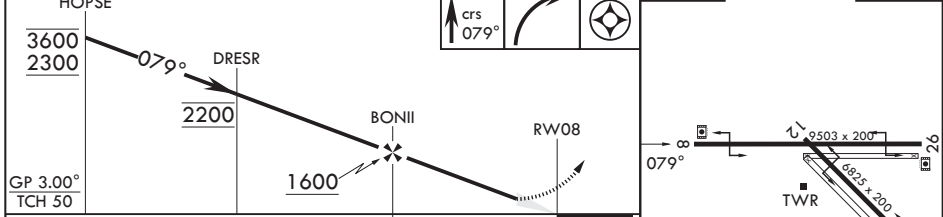
For uncompensated Baro-VNAV systems, LNAV/VNAV NA below -14°C (7°F) or above 54°C (129°F).



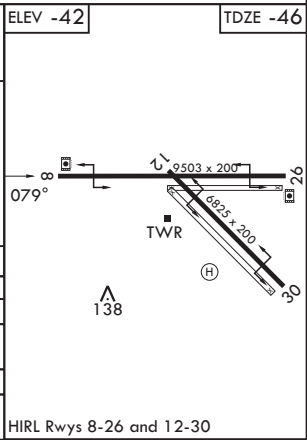
SW-3, 14 MAY 2026 to 11 JUN 2026

SW-3, 14 MAY 2026 to 11 JUN 2026

EMERG SAFE ALT 100 NM 17,000



CATEGORY	A		B		C		D	
LPV DA	204- ³ / ₄		250		(300- ³ / ₄)			
LNAV/VNAV DA	204- ³ / ₄	235- ⁷ / ₈	281 (300- ⁷ / ₈)	249- ⁷ / ₈	268- ⁷ / ₈	295 (300- ⁷ / ₈)	314 (400- ⁷ / ₈)	
LNAV MDA	460-1	506	(600-1)	460-1 ³ / ₈	506	(600-1 ³ / ₈)		
CIRCLING	480-1	522	(600-1)	480-1 ¹ / ₂	522	(600-1 ¹ / ₂)	562 (600-2)	



EL CENTRO, CALIFORNIA 32°50'N - 115°40'W EL CENTRO NAF (VRACIU FLD) (KNJK)

Orig 13JUL23

RNAV (GPS) RWY 8