

TACAN RWY 26

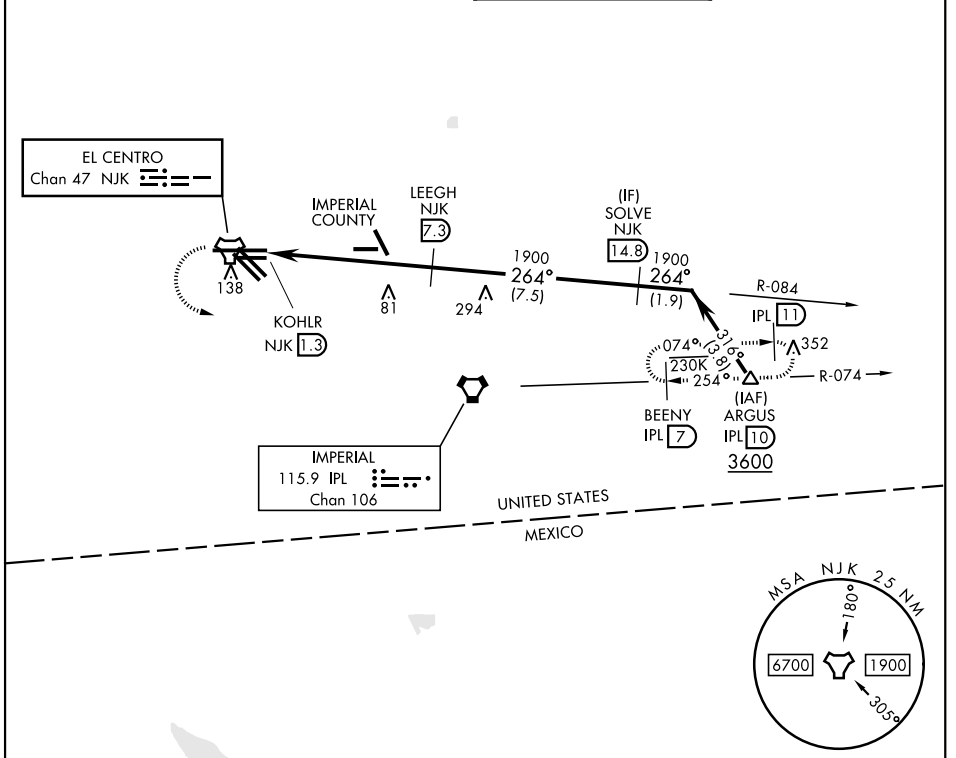
TACAN Chan	NJK 47	APCH CRS	264°	Rwy Idg TDZE	9503 -46	Arprt Elev	-42
------------	--------	----------	------	--------------	-------------	------------	-----

[USN]

EL CENTRO NAF (VRACIU FLD) (KNJK)

▼ Circling to Rwy 30 not authorized at night.
 MISSED APPROACH: Climb to 500, then climbing left turn to 2400 direct IPL VORTAC. Then direct BEENY via IPL R-074 and hold.

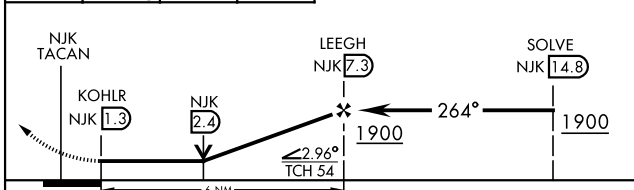
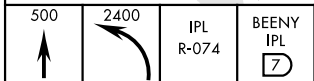
ATIS ★ 269.275	APP CON 132.275 292.2	TOWER ★ 119.1 360.2	GND CON 121.9 254.35
--------------------------	---------------------------------	-------------------------------	--------------------------------



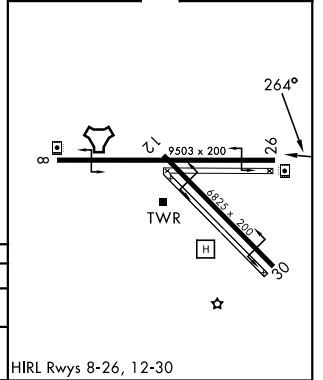
SW-3, 14 MAY 2026 to 11 JUN 2026

SW-3, 14 MAY 2026 to 11 JUN 2026

EMERG SAFE ALT 100 NM 17,000



ELEV	-42	TDZE	-46
------	-----	------	-----



CATEGORY	A		B		C		D	
S-26	380-1	426	(500-1)		380-1¼	426	(500-1¼)	
CIRCLING	480-1	522	(600-1)		480-1½	522	(600-1½)	520-2 562 (600-2)

HIRL Rwys 8-26, 12-30

EL CENTRO, CALIFORNIA 32°50'N-115°40'W EL CENTRO NAF (VRACIU FLD) (KNJK)

Orig 13JUL23

TACAN RWY 26