

YUMA, ARIZONA

HI-TACAN Z RWY 21R

TACAN NYL Chan 84	APCH CRS 208°	Rwy Idg 13,300 TDZE 193 Arprt Elev 213
-----------------------------	-------------------------	---

[USN]

YUMA MCAS/YUMA INTL (KNYL)

* When ALS inop, increase vis to 1 1/4 miles.

MALS R (A5)

MISSED APPROACH: Climb to 1000 then climbing right turn to 4600 on hdg 012° and NYL TACAN R-342 to JIMUK and hold, continue climb-in-hold to 4600.

ATIS 118.8 273.5	APP CON 124.7 371.975	TOWER 119.3 (CTAF) 0 377.075	GND CON 121.9 314.0	ASR/PAR
----------------------------	---------------------------------	--	-------------------------------	---------

Request holding from Los Angeles ARTCC prior to frequency change to MCAS Yuma Approach Control.

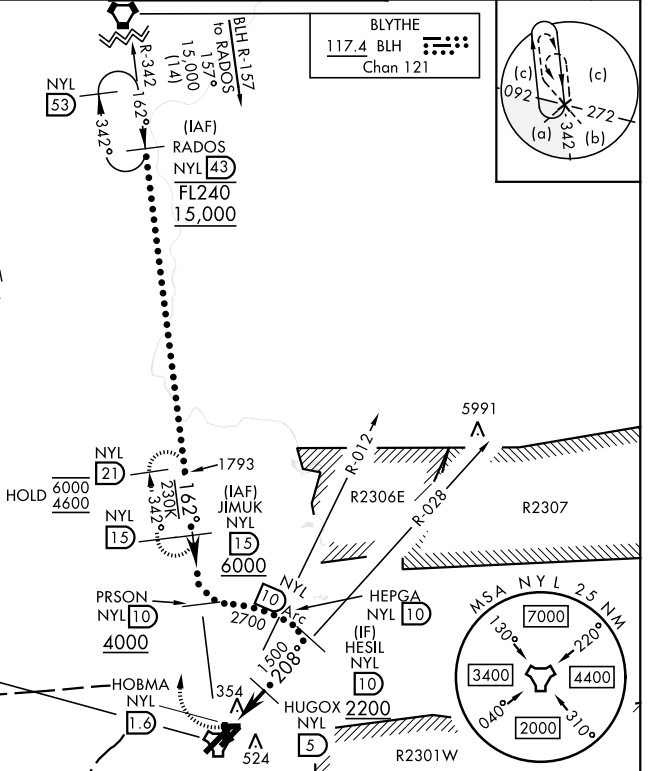
CAUTION:
Short intermediate, recommend early configuration.

CAUTION:
R-2507 and R-2512 located approximately 33 NM/28 NM NW respectively of NYL TACAN.

CAUTION: Intermediate segment 5.0 NM less than minimum 6.0 NM for CAT CDE.

Holding at IAF PRSON not authorized with aircraft holding at CAZZI or JIMUK.

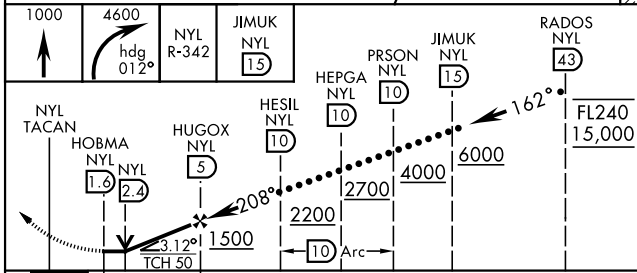
Holding at JIMUK not authorized with aircraft holding at CAZZI or PRSON.



YUMA
Chan 84 NYL

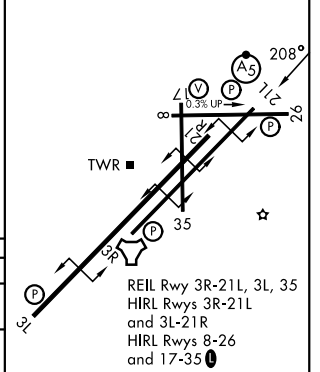
UNITED STATES
MEXICO

EMERG SAFE ALT 100 NM 18,000



ELEV 213	TDZE 193
----------	----------

CATEGORY	C	D	E
S-21R*	620-3/4	427	(500-3/4)
CIRCLING	860-1 3/4 647 (700-1 3/4)	860-2 647 (700-2)	860-2 1/4 647 (700-2 1/4)



REIL Rwy 3R-21L, 3L, 35
HIRL Rwys 3R-21L
and 3L-21R
HIRL Rwys 8-26
and 17-35

YUMA, ARIZONA
Amdt 7 22JAN26

32°39'N-114°36'W

YUMA MCAS/YUMA INTL (KNYL)

HI-TACAN Z RWY 21R

SW-4, 14 MAY 2026 to 11 JUN 2026

SW-4, 14 MAY 2026 to 11 JUN 2026