

YUMA, ARIZONA


# ILS or LOC RWY 21R

LOC I-YUM <b>108.3</b>	APCH CRS <b>211°</b>	Rwy Ldg 21L <b>9239</b> 21R <b>13,300</b>	TDZE 21L <b>208</b> 21R <b>193</b>	Arpt Elev <b>213</b>
---------------------------	-------------------------	---	--	-------------------------

[USN] YUMA MCAS/YUMA INTL (KNYL)

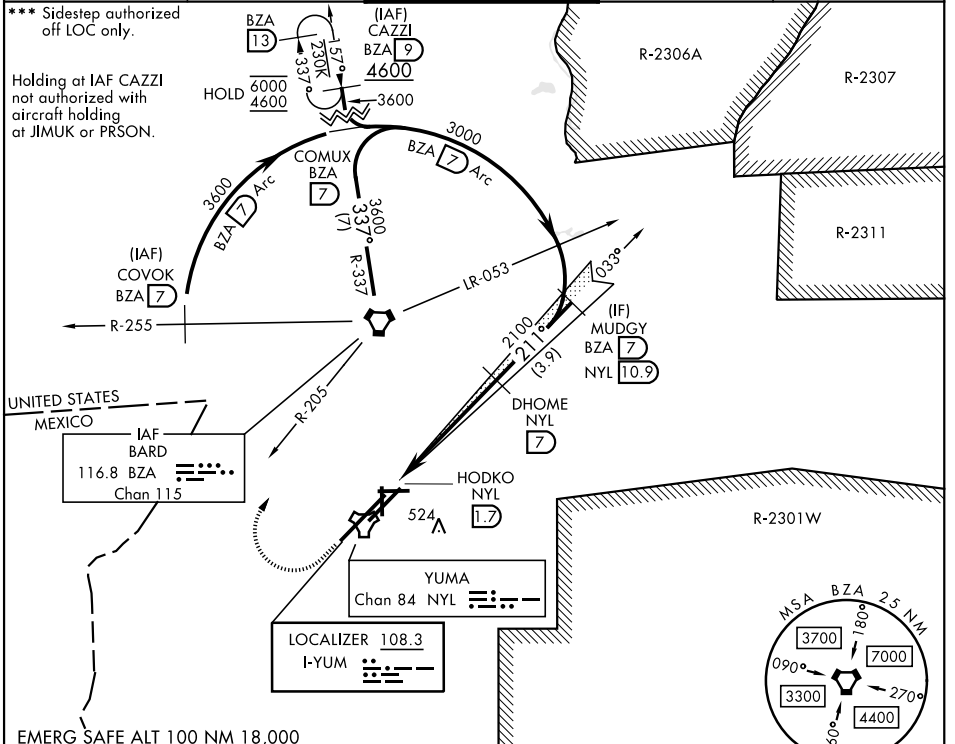
VOR, DME required

▼ \* When ALS inop, increase vis to ¾ mile.  
\*\* When ALS inop, increase CAT AB vis to 1 mile, CAT CD vis to 1½ miles.

MALSR 

MISSED APPROACH: Climb to 900, then climbing right turn to 4600 heading 355° and intercept BZA VORTAC R-205 direct BZA. Then outbound via BZA R-337 to CAZZI and hold, continue climb-in-hold to 4600.

ATIS <b>118.8 273.5</b>	APP CON <b>124.7 371.975</b>	TOWER <b>119.3 (CTAF) 0 377.075</b>	GND CON <b>121.9 314.0</b>	ASR/PAR
----------------------------	---------------------------------	--	-------------------------------	---------



900	4600	BZA	MUDGY BZA 7	
BZA R-205			NYL 10.9	
VGSi and ILS glidepath not coincident (VGSi Angle 3.00/TCH 50).				
HODKO NYL 1.7		DHOME NYL 7		
2100		3000		
GS 3.00°		TCH 54		
CATEGORY	A	B	C	D
S-ILS 21R *	393-½		200	(200-½)
S-LOC 21R **	600-½	407 (400-½)	600-¾	407 (400-¾)
SIDESTEP 21L ***	600-½	392 (400-½)	600-2	392 (400-2)
CIRCLING	680-1	467 (500-1)	860-1¾	860-2
			647 (700-1¾)	647 (700-2)

ELEV 213 **D** TDZE 21L 208 TDZE 21R 193

211°

0.35 UP

TWR

376

35

REIL Rwy 3L, 3R, 21L, 35  
HIRL Rwy 3R-21L, 3L-21R  
HIRL Rwy 8-26, 17-35

YUMA, ARIZONA  
Amdt 7 22JAN26

32° 39' N - 114° 36' W

YUMA MCAS/YUMA INTL (KNYL)

# ILS or LOC RWY 21R

SW-4, 14 MAY 2026 to 11 JUN 2026

SW-4, 14 MAY 2026 to 11 JUN 2026