

TACAN Y RWY 3L

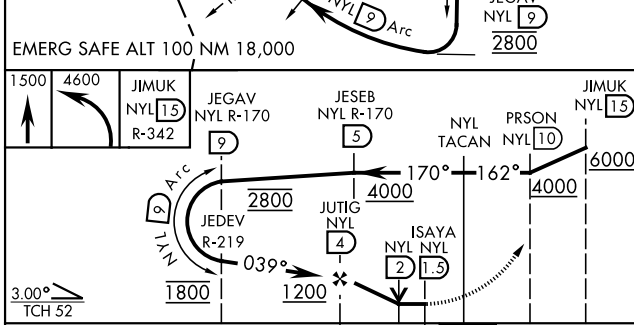
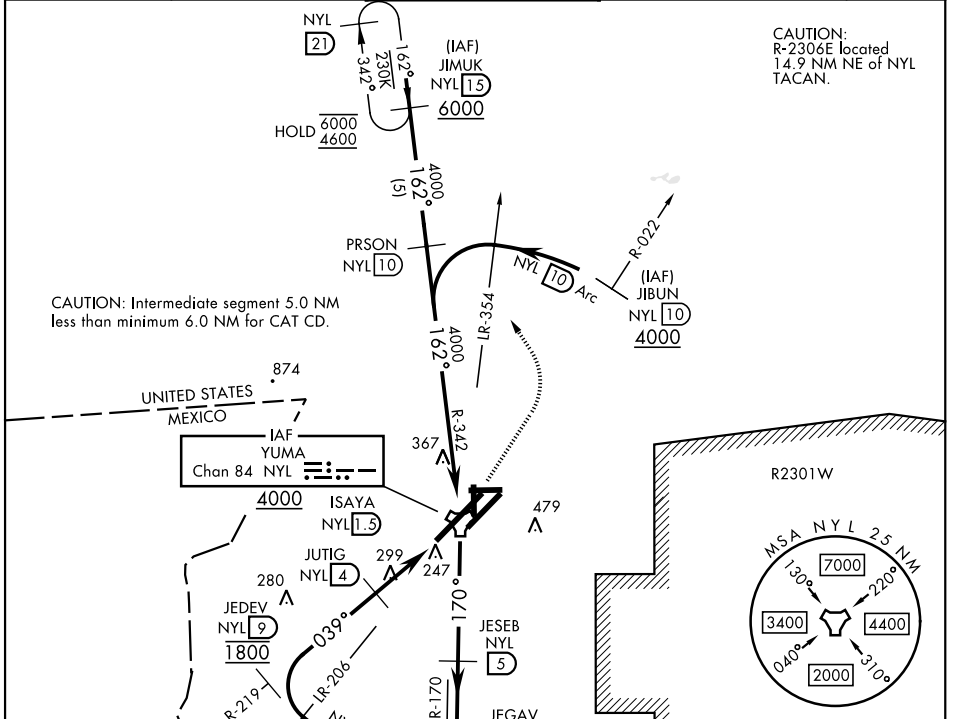
YUMA MCAS/YUMA INTL (KNYL)

TACAN NYL Chan 84	APCH CRS 039°	Rwy Idg 13,300 TDZE 195 Arprt Elev 213
--------------------------	----------------------	---

[USN]

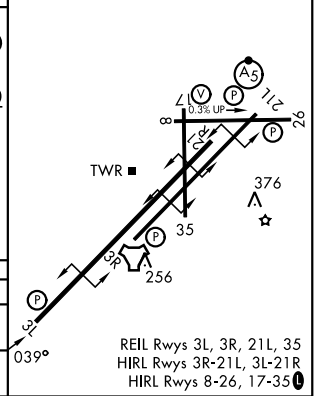
MISSSED APPROACH: Climb to 1500, then climbing left turn heading 297° to 4600 on NYL TACAN R-342 to JIMUK and hold, continue climb in hold to 4600.

ATIS 118.8 273.5	APP CON 124.7 371.975	TOWER 119.3 (CTAF) 0 377.075	GND CON 121.9 314.0	ASR/ PAR
----------------------------	---------------------------------	--	-------------------------------	-------------



CATEGORY	A	B	C	D
S-3L		560-1	365 (400-1)	
CIRCLING	680-1 467 (500-1)		860-1¾ 647 (700-1¾)	860-2 647 (700-2)

ELEV	213	TDZE	195
------	-----	------	-----



TACAN Y RWY 3L

SW-4, 14 MAY 2026 to 11 JUN 2026

SW-4, 14 MAY 2026 to 11 JUN 2026