

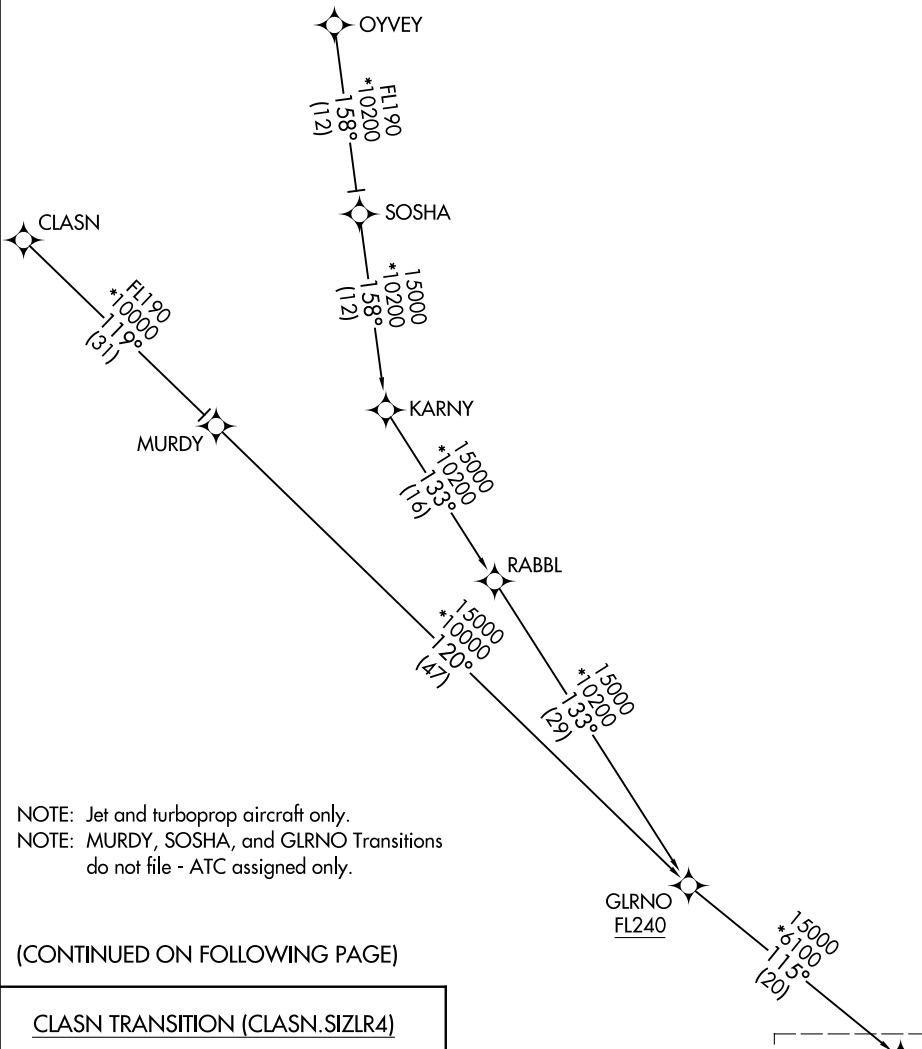
SIZLR FOUR ARRIVAL (RNAV) Transition Routes

PALM SPRINGS, CALIFORNIA

RNAV 1 - DME/DME/IRU or GPS.

RADAR required.

SOCAL APP CON
 134.0 278.3
 PSP ATIS
 124.65
 PALM SPRINGS TOWER*
 119.7 377.05

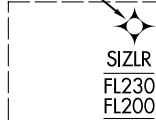


NOTE: Jet and turboprop aircraft only.
 NOTE: MURDY, SOSHA, and GLRNO Transitions do not file - ATC assigned only.

(CONTINUED ON FOLLOWING PAGE)

- CLASN TRANSITION (CLASN.SIZLR4)
- GLRNO TRANSITION (GLRNO.SIZLR4)
- MURDY TRANSITION (MURDY.SIZLR4)
- OYVEY TRANSITION (OYVEY.SIZLR4)
- SOSHA TRANSITION (SOSHA.SIZLR4)

NOTE: Chart not to scale.



See following page for arrival routes

SW-3, 14 MAY 2026 to 11 JUN 2026

SW-3, 14 MAY 2026 to 11 JUN 2026

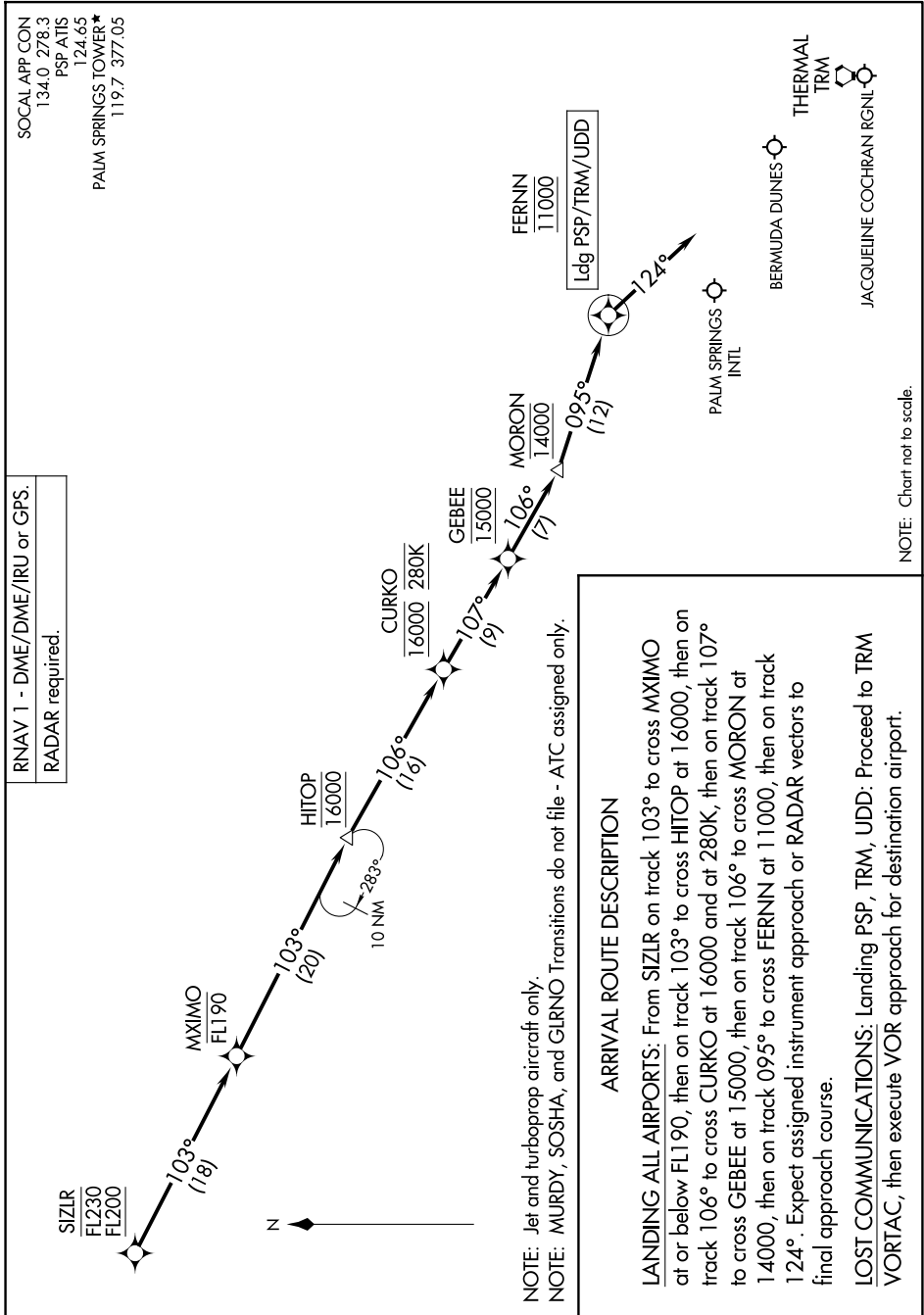
SIZLR FOUR ARRIVAL (RNAV) Transition Routes

PALM SPRINGS, CALIFORNIA

SIZLR FOUR ARRIVAL (RNAV) Arrival Routes

PALM SPRINGS, CALIFORNIA

SW-3, 14 MAY 2026 to 11 JUN 2026



SW-3, 14 MAY 2026 to 11 JUN 2026