

JADKO TWO DEPARTURE (RNAV)

AL-547 (FAA-O)

SAN BERNARDINO INTL (SBD)
SAN BERNARDINO, CALIFORNIA

SW-3, 14 MAY 2026 to 11 JUN 2026

DEPARTURE ROUTE DESCRIPTION

TAKEOFF RUNWAY 6: Climb on heading 057° to 2100, then climbing right turn direct LOSOM to cross LOSOM at or above 5500, then on track 155° to cross STRKS between 6100 and 6900, then on track 172° to ELICA, thence. . . .

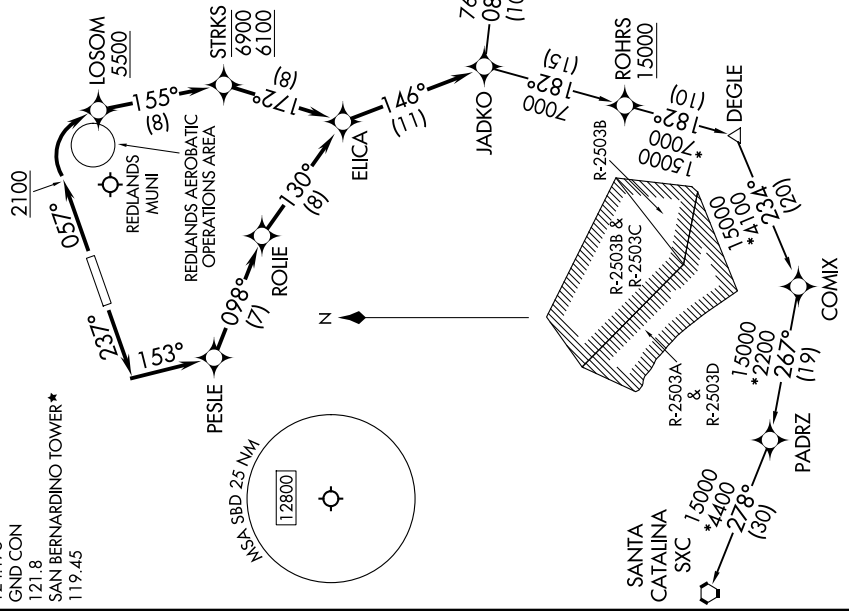
TAKEOFF RUNWAY 24: Climb on heading 237° to intercept course 153° to PESLE, then on track 098° to ROLIE, then on track 130° to ELICA, thence. . . . on track 146° to JADKO. Expect filled altitude 10 minutes after departure.

AVRRY TRANSITION (JADKO2.AVRRY)
MTBAL TRANSITION (JADKO2.MTBAL)
SANTA CATALINA TRANSITION (JADKO2.SXC)

**TOP ALTITUDE:
AVRRY AND MTBAL TRANSITIONS: 14000;
SANTA CATALINA TRANSITION: 15000.**

RNAV 1 - GPS.
RADAR required.

SOCAL DEP CON
127.0 318.2
D-ATIS
124.175
GND CON
121.8
SAN BERNARDINO TOWER*
119.45



SW-3, 14 MAY 2026 to 11 JUN 2026

NOTE: Chart not to scale.

TAKEOFF MINIMUMS
Rwy 6: Standard with minimum climb of 602' per NM to 5800.
Rwy 24: Standard with minimum climb of 439' per NM to 4100.

NOTE: Jet and turboprop aircraft only.
NOTE: Rwy 6 departures maintain at or below 210K until leaving 3500.
NOTE: Scheduled aerobatic activity beginning 4.5 NM east of Rwy 6 DER/ 2.7 NM west of LOSOM 3800 feet to 7800 feet MSL. 123.05.