

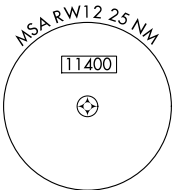
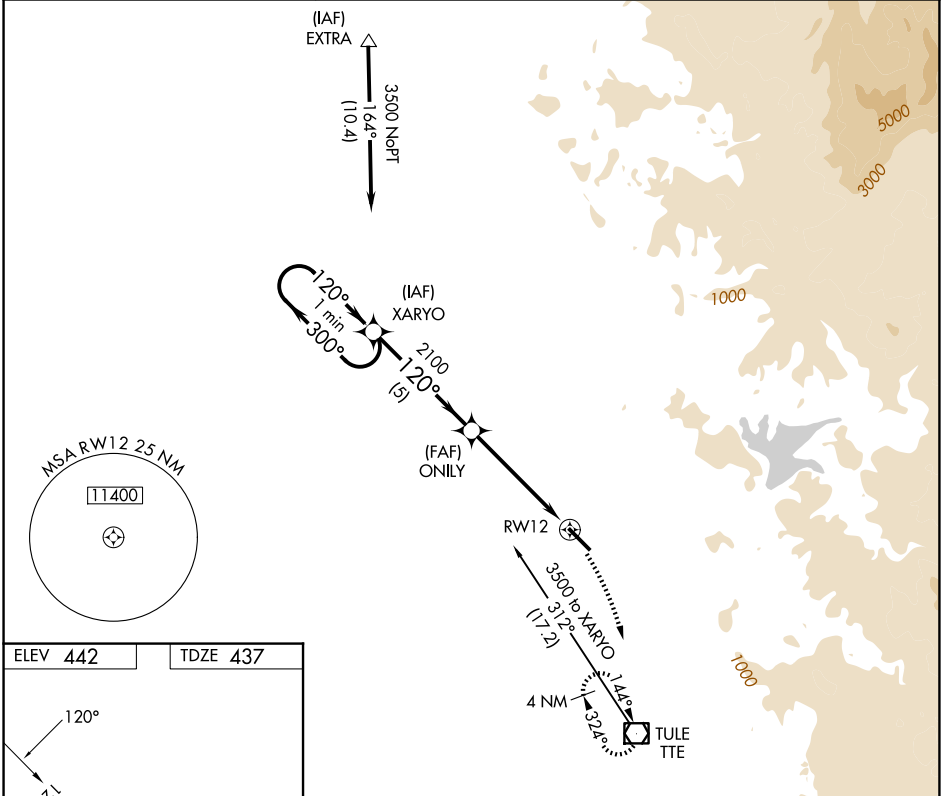
APP CRS	Rwy Ldg	<b>5960</b>
<b>120°</b>	TDZE	<b>437</b>
	Apt Elev	<b>442</b>

# GPS RWY 12

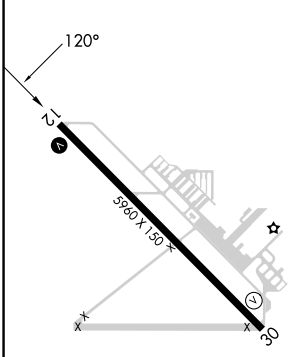
PORTERVILLE MUNI (PTV)

	MISSED APPROACH: Climbing right turn to 3100 direct TTE VOR/DME and hold.
--	--

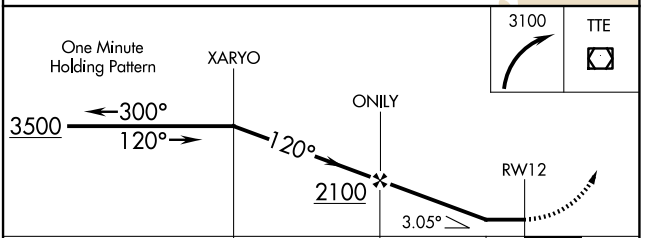
AWOS-3PT <b>134.625</b>	BAKERSFIELD APP CON * <b>119.075</b>	UNICOM <b>122.8 (CTAF)</b>
----------------------------	---	-------------------------------



ELEV 442	TDZE 437
----------	----------



REIL Rwy 30  
HIRL Rwy 12-30



CATEGORY	A	B	C	D
S-12	800-1 363 (400-1)			800-1¼ 363 (400-1¼)
CIRCLING	880-1 438 (500-1)	900-1 458 (500-1)	940-1½ 498 (500-1½)	1080-2 638 (700-2)

SW-2, 14 MAY 2026 to 11 JUN 2026

SW-2, 14 MAY 2026 to 11 JUN 2026