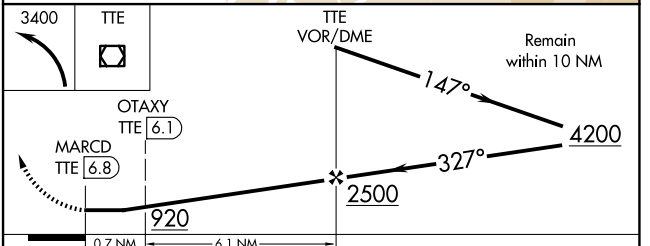
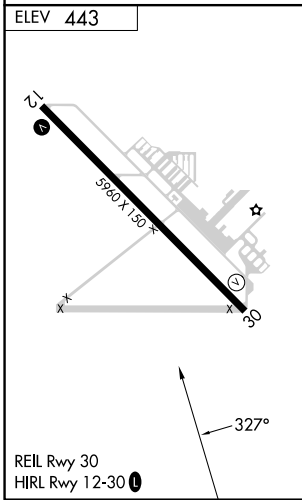
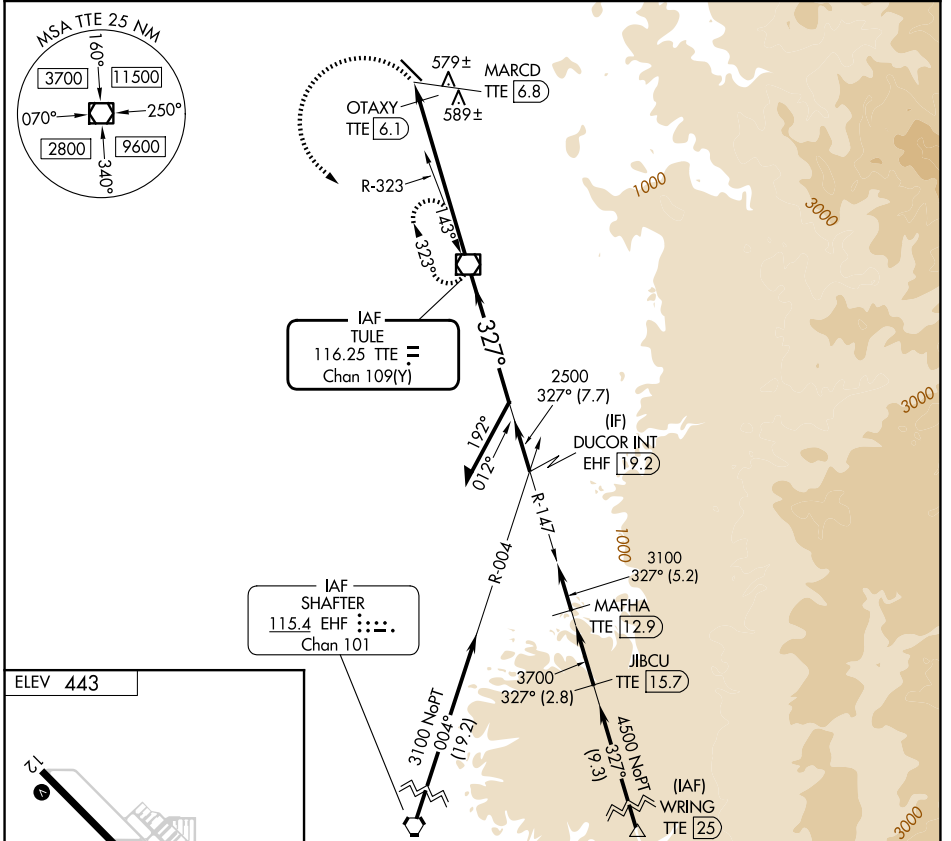


VOR/DME TTE <b>116.25</b> Chan <b>109(Y)</b>	APP CRS <b>327°</b>	Rwy Ldg TDZE Apt Elev <b>N/A</b> <b>N/A</b> <b>443</b>
--	------------------------	---

**VOR-A**  
PORTERVILLE MUNI (P'TV)

DME required. ▼ ▲	MISSED APPROACH: Climbing left turn to 3400 direct TTE VOR/DME and hold.
-------------------------	--

AWOS-3PT <b>134.625</b>	BAKERFIELD APP CON* <b>119.075</b>	UNICOM <b>122.8 (CTAF) 0</b>
----------------------------	---------------------------------------	---------------------------------



CATEGORY	A	B	C	D
CIRCLING	880-1 437 (500-1)	900-1 457 (500-1)	960-1½ 517 (600-1½)	1100-2 657 (700-2)

SW-2, 14 MAY 2026 to 11 JUN 2026

SW-2, 14 MAY 2026 to 11 JUN 2026