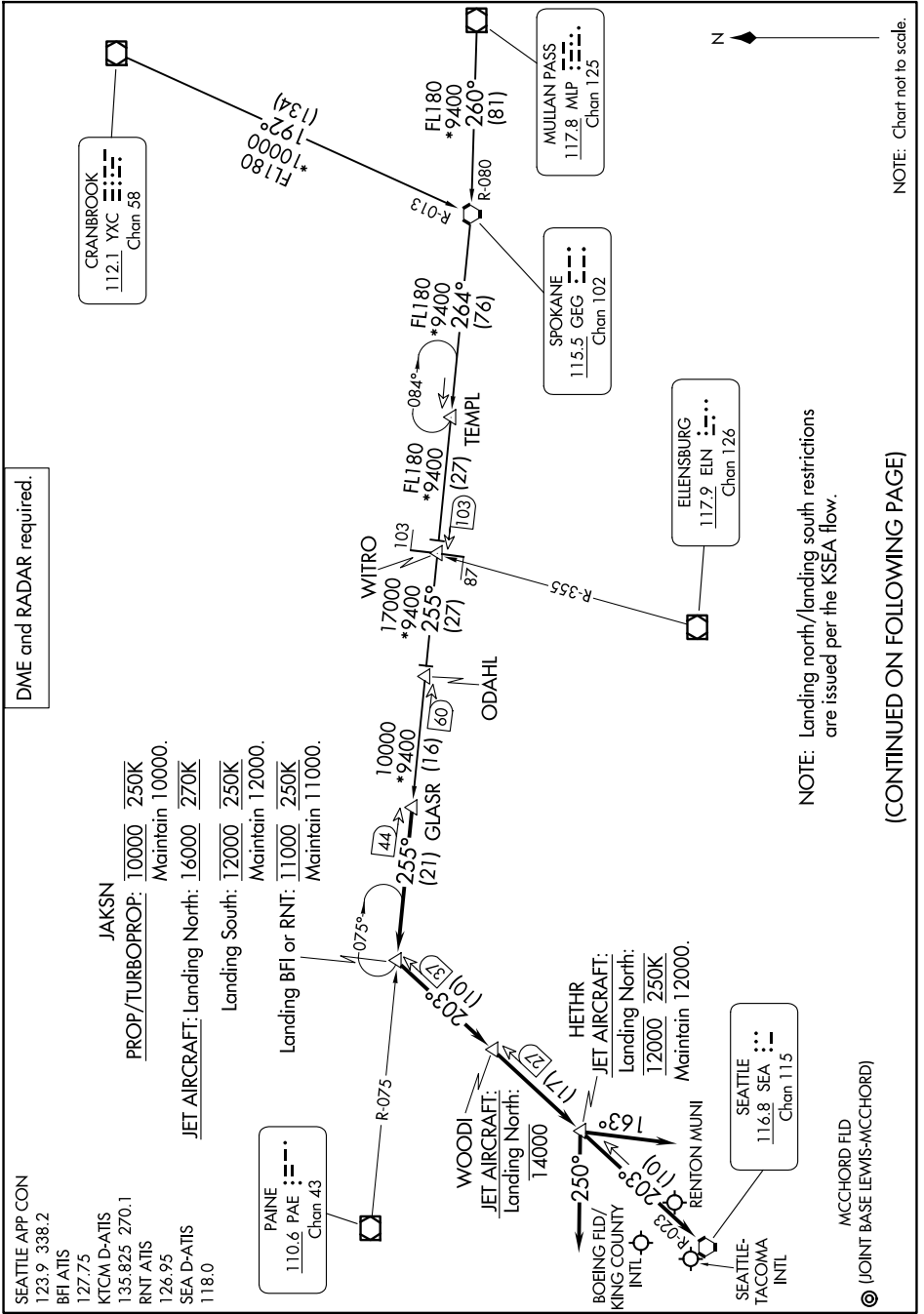


GLASR THREE ARRIVAL

AL-582 (FAA)

SEATTLE, WASHINGTON

NW-1, 14 MAY 2026 to 11 JUN 2026



NOTE: Chart not to scale.

NOTE: Landing north/landing south restrictions are issued per the KSEA flow.

(CONTINUED ON FOLLOWING PAGE)

NW-1, 14 MAY 2026 to 11 JUN 2026

GLASR THREE ARRIVAL

SEATTLE, WASHINGTON

ARRIVAL ROUTE DESCRIPTION

CRANBROOK TRANSITION (YXC.GLASR3): From over YXC VOR/DME on YXC R-192 and GEG R-013 to GEG VORTAC, then on GEG R-264 to WITRO, then on PAE R-075 to GLASR. Thence. . . .

MULLAN PASS TRANSITION (MLP.GLASR3): From over MLP VOR/DME on MLP R-260 and GEG R-080 to GEG VORTAC, then on GEG R-264 to WITRO, then on PAE R-075 to GLASR. Thence. . . .

SPOKANE TRANSITION (GEG.GLASR3): From over GEG VORTAC on GEG R-264 to WITRO, then on PAE R-075 to GLASR. Thence. . . .

TEMPL TRANSITION (TEMPL.GLASR3): From over TEMPL on GEG R-264 to WITRO, then on PAE R-075 to GLASR. Thence. . . .

. . . .from GLASR on PAE R-075 to JAKSN, then on SEA R-023 to WOODI, then on SEA R-023 to HETHR. Thence. . . .

LANDING NORTH: Heading 163° for vectors to final approach course.

LANDING SOUTH: Heading 250° for vectors to final approach course.

LANDING MCCHORD FLD: From over HETHR, proceed direct to SEA VORTAC.

LANDING RENTON MUNI: From over HETHR, proceed direct to SEA VORTAC.

LOST COMMUNICATIONS: From HETHR, proceed direct SEA VORTAC.

NW-1, 14 MAY 2026 to 11 JUN 2026

NW-1, 14 MAY 2026 to 11 JUN 2026