

LOC/DME FAS 110.3 Chan 40	APP CRS 259°	Rwy Ldg 26R 26L TDZE 2067 2069 Apt Elev 2181 2181
--	------------------------	---

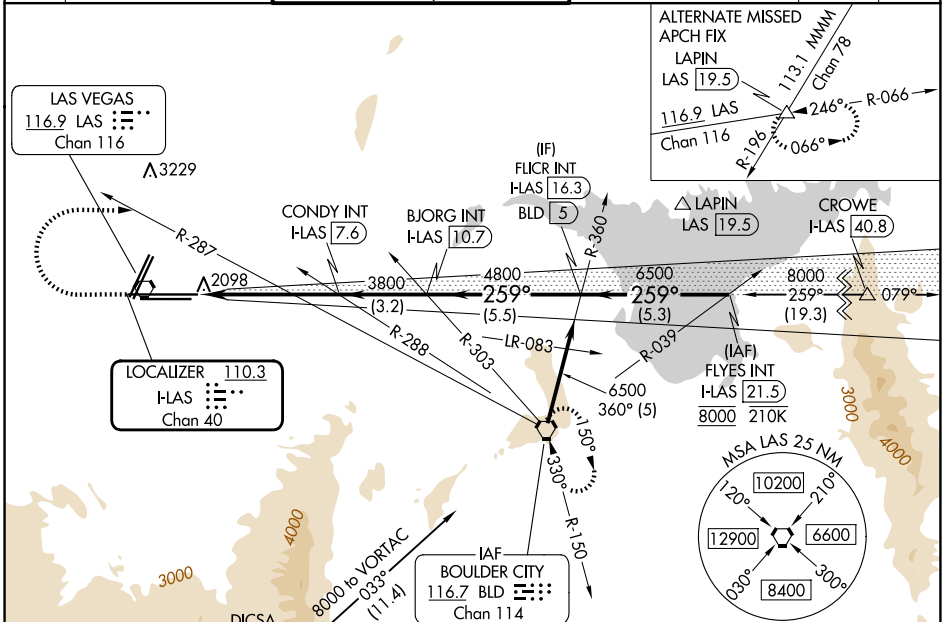
ILS Z or LOC Z RWY 26R

HARRY REID INTL (LAS)

⚠ For inop ALS, increase S-ILS-26R all Cats visibility to ½ SM, S-LOC-26R Cat E visibility to 1 ¾ SM. Inop table does not apply to sidestep 26L.

MALS Rwy 26R 	MALS F Rwy 26L 	MISSED APPROACH: Climb to 3200 then climbing right turn to 6000 on heading 079° and on BLD R-287 to BLD VORTAC and hold, continue climb-in-hold to 6000.
------------------	--------------------	--

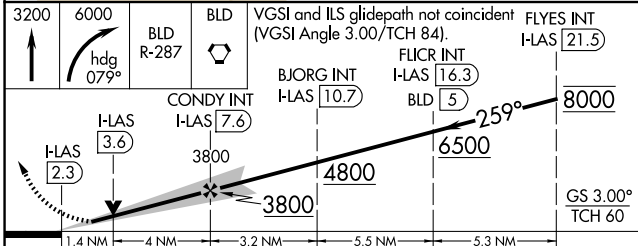
D-ATIS 132.4	LAS VEGAS APP CON 125.025 379.15 (West) 119.775 282.2 (East)	LAS VEGAS TOWER 118.75 257.8 (Rwy 1L/19R, 1R/19L) 119.9 257.8 (Rwy 8L/26R, 8R/26L)	GND CON 121.1 270.8 E of 1R/19L 121.9 254.3 W of 1L/19R	CLNC DEL 118.0	CPDLC
------------------------	--	--	---	--------------------------	-------



SW-4, 14 MAY 2026 to 11 JUN 2026

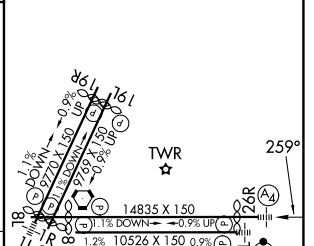
SW-4, 14 MAY 2026 to 11 JUN 2026

DICSA BLD 11.4
Procedure NA for arrivals on BLD VORTAC
airway radials 332 CW 016.



ELEV 2181	D	TDZE 26R 2067 TDZE 26L 2069
-----------	----------	--------------------------------

CATEGORY	A	B	C	D	E
S-ILS 26R	2334-¾ 267 (200-¾)				
S-LOC 26R	2560-¾ 493 (400-¾)		2560-1½ 493 (400-1½)		
SIDESTEP 26L	2560-1 491 (400-1)		2560-1½ 491 (400-1½)	2560-2 491 (400-2)	
CIRCLING	3020-1¼ 839 (900-1¼)	3060-1¼ 879 (900-1¼)	3100-2¾ 919 (1000-2¾)	3540-3 1359 (1400-3)	



MIRL Rwy 1R-19L REIL Rws 1R, 8R, 19L and 19R HIRL Rws 1L-19R, 8L-26R and 8R-26L	FAF to MAP 5.3 NM				
Knots	60	90	120	150	180
Min:Sec	5:18	3:32	2:39	2:07	1:46