

JOHR FIVE DEPARTURE (RNAV)

AL-662 (FAA)
Departure Routes

HARRY REID INTL (LAS)
LAS VEGAS, NEVADA

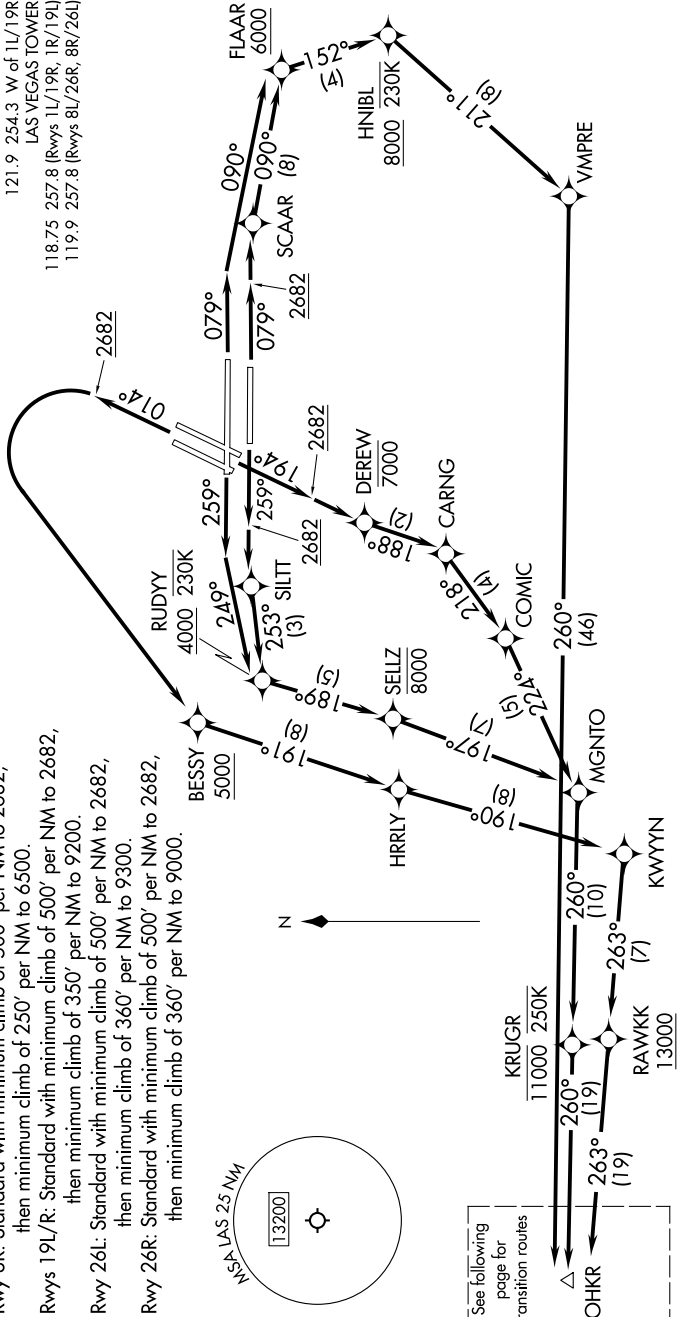
**TOP ALTITUDE:
FL190**

RNAV 1 - DME/DME/IRU or GPS.
RADAR required for non-GPS equipped aircraft.

TAKEOFF MINIMUMS

- Rwy 1L: Standard with minimum climb of 514' per NM to 8700.
- Rwy 1R: Standard with minimum climb of 526' per NM to 8700.
- Rwy 8L: Standard with minimum climb of 500' per NM to 2682, then minimum climb of 360' per NM to 10500.
- Rwy 8R: Standard with minimum climb of 500' per NM to 2682, then minimum climb of 250' per NM to 6500.
- Rwys 19L/R: Standard with minimum climb of 500' per NM to 2682, then minimum climb of 350' per NM to 9200.
- Rwy 26L: Standard with minimum climb of 500' per NM to 2682, then minimum climb of 360' per NM to 9300.
- Rwy 26R: Standard with minimum climb of 500' per NM to 2682, then minimum climb of 360' per NM to 9000.

LAS VEGAS DEP CON
125.9 307.25
D-ATIS
132.4
CINC DEL
118.0
CPDIC
GND.CON
121.1 270.8 E of 1R/19L
121.9 254.3 W of 1L/19R
LAS VEGAS TOWER
118.75 257.8 (Rwys 1L/19R, 1R/19L)
119.9 257.8 (Rwys 8L/26R, 8R/26L)



NOTE: Chart not to scale.

(CONTINUED ON FOLLOWING PAGE)

SW-4, 14 MAY 2026 to 11 JUN 2026

JOHR FIVE DEPARTURE (RNAV)

Departure Routes

LAS VEGAS, NEVADA
HARRY REID INTL (LAS)

(JOHKR5.JOHKR) 24361

JOHKR FIVE DEPARTURE (RNAV)

AL-662 (FAA)
Transition Routes

HARRY REID INTL (LAS)
LAS VEGAS, NEVADA

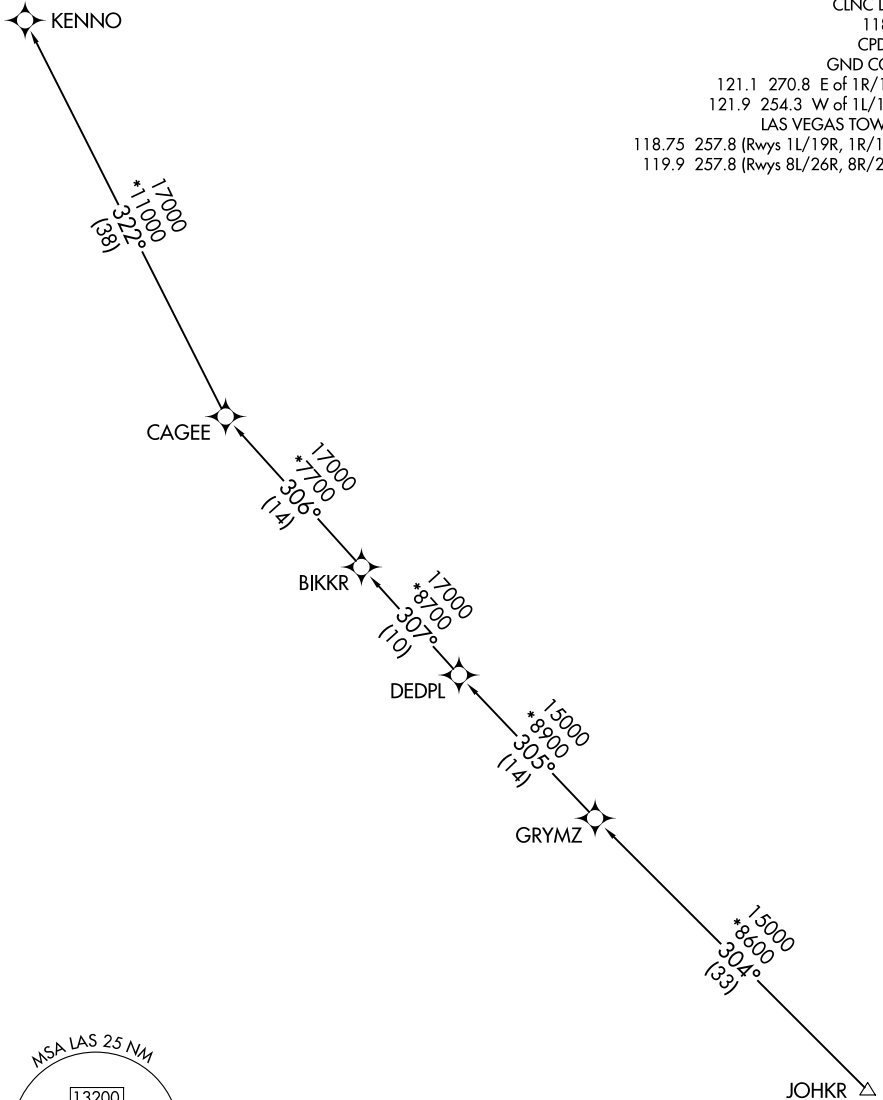
RNAV 1 - DME/DME/IRU or GPS.
RADAR required for non-GPS equipped aircraft.

**TOP ALTITUDE:
FL190**

LAS VEGAS DEP CON
125.9 307.25
D-ATIS
132.4
CLNC DEL
118.0
CPDLC
GND CON
121.1 270.8 E of 1R/19L
121.9 254.3 W of 1L/19R
LAS VEGAS TOWER
118.75 257.8 (Rwys 1L/19R, 1R/19L)
119.9 257.8 (Rwys 8L/26R, 8R/26L)

SW-4, 14 MAY 2026 to 11 JUN 2026

SW-4, 14 MAY 2026 to 11 JUN 2026



(CONTINUED ON FOLLOWING PAGE)

NOTE: Chart not to scale.

JOHKR FIVE DEPARTURE (RNAV)

Transition Routes

LAS VEGAS, NEVADA
HARRY REID INTL (LAS)

(JOHKR5.JOHKR) 26DEC24



DEPARTURE ROUTE DESCRIPTION

TAKEOFF RUNWAYS 1L/R: Climb on heading 014° to 2682, then left turn direct BESSY at or above 5000, then on track 191° to HRRLY, then on track 190° to KWYYN, then on track 263° to cross RAWKK at or above 13000, then on track 263° to JOHKR, thence

TAKEOFF RUNWAY 8L: Climb on heading 079° to intercept course 090° to cross FLAAR at or above 6000, then on track 152° to cross HNIBL at or above 8000 and at or below 230K, then on track 211° to VMPRE, then on track 260° to JOHKR, thence

TAKEOFF RUNWAY 8R: Climb on heading 079° to 2682, then direct SCAAR, then on track 090° to cross FLAAR at or above 6000, then on track 152° to cross HNIBL at or above 8000 and at or below 230K, then on track 211° to VMPRE, then on track 260° to JOHKR, thence

TAKEOFF RUNWAYS 19L/R: Climb on heading 194° to 2682, then direct DEREW at or below 7000, then on track 188° to CARNG, then on track 218° to COMIC , then on track 224° to MGNT0, then on track 260° to cross KRUGR at or below 11000 and at or below 250K, then on track 260° to JOHKR, thence

TAKEOFF RUNWAY 26L: Climb on heading 259° to 2682, then direct SILTT, then on track 253° to cross RUDYY at or above 4000 and at or below 230K, then on track 189° to cross SELLZ at or below 8000, then on track 197° to MGNT0, then on track 260° to cross KRUGR at or below 11000 and at or below 250K, then on track 260° to JOHKR, thence

TAKEOFF RUNWAY 26R: Climb on heading 259° to intercept course 249° to cross RUDYY at or above 4000 and at or below 230K, then on track 189° to cross SELLZ at or below 8000, then on track 197° to MGNT0, then on track 260° to cross KRUGR at or below 11000 and at or below 250K, then on track 260° to JOHKR, thence

. . . . on (transition). Maintain FL190. Expect filed altitude 10 minutes after departure.

KENNO TRANSITION (JOHKR5.KENNO)

SW-4, 14 MAY 2026 to 11 JUN 2026

SW-4, 14 MAY 2026 to 11 JUN 2026