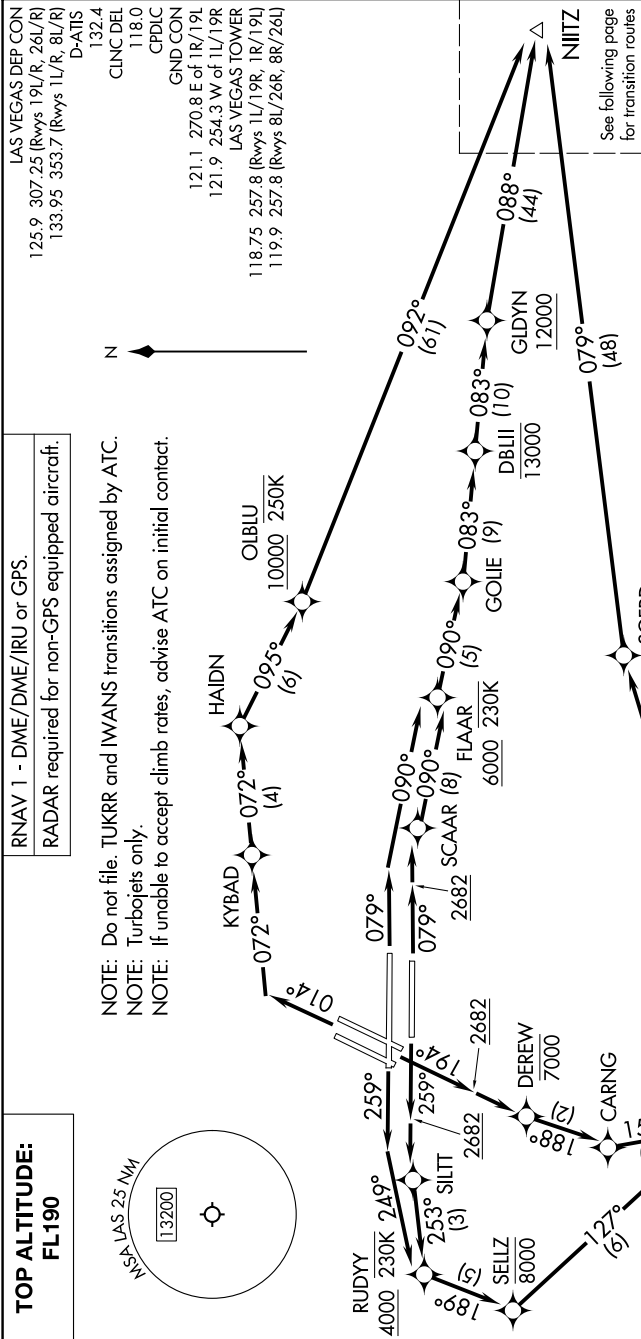


# N11TZ FOUR DEPARTURE (RNAV) Departure Routes

SW-4, 14 MAY 2026 to 11 JUN 2026



# N11TZ FOUR DEPARTURE (RNAV) Departure Routes

**TAKEOFF MINIMUMS**  
 Rwys 1L/R: Standard with minimum climb of 500'/NM to 2682 then 280'/NM to 4800.  
 Rwys 8L/R: Standard with minimum climb of 500'/NM to 2682.  
 Rwys 19L/R: Standard with minimum climb of 571'/NM to 8000.  
 Rwys 26L/R: Standard with minimum climb of 500'/NM to 2682 then 240'/NM to 5000.

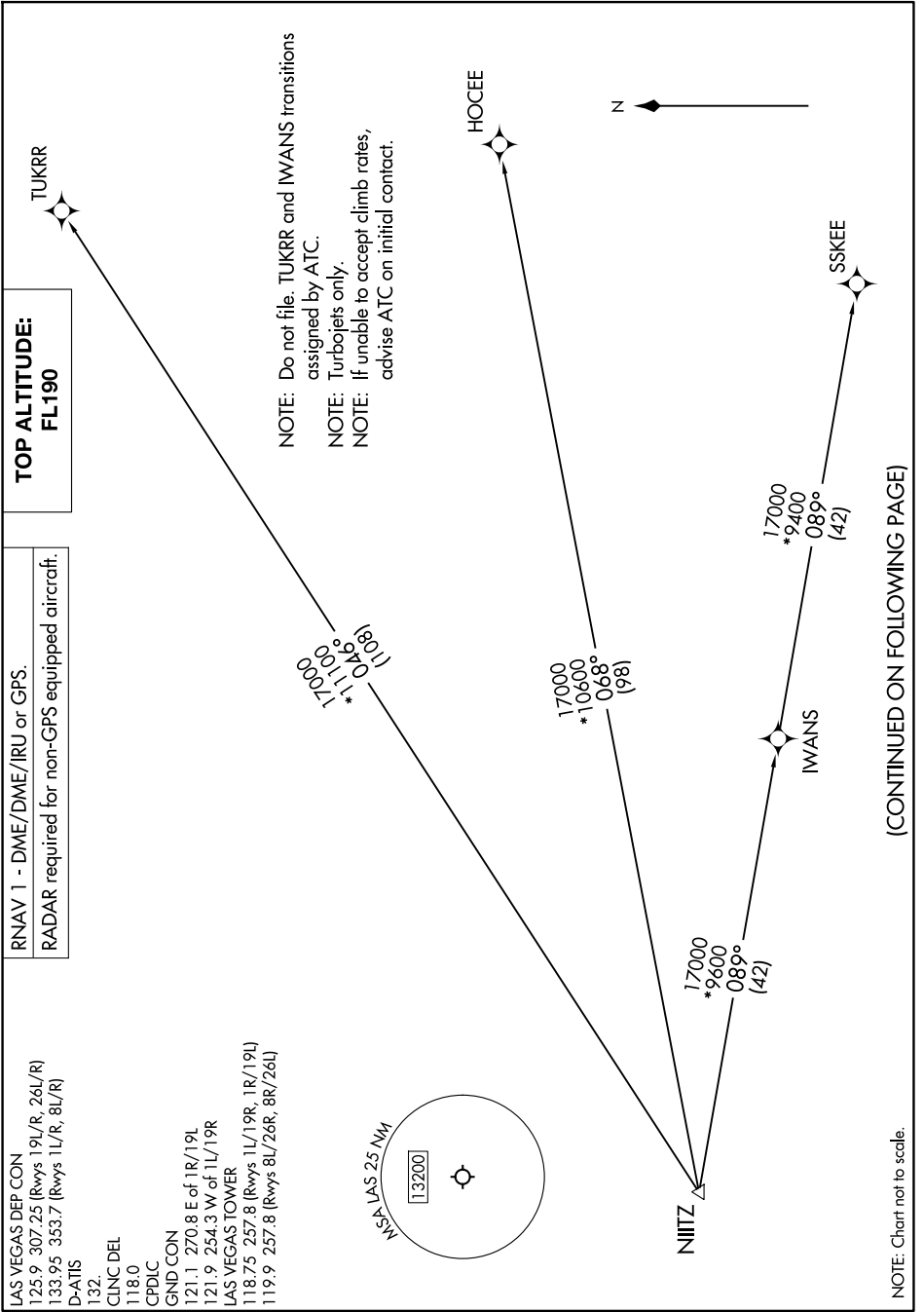
(CONTINUED ON FOLLOWING PAGE)

NOTE: Chart not to scale.

SW-4, 14 MAY 2026 to 11 JUN 2026

# N1ITZ FOUR DEPARTURE (RNAV) Transition Routes

SW-4, 14 MAY 2026 to 11 JUN 2026



(CONTINUED ON FOLLOWING PAGE)

SW-4, 14 MAY 2026 to 11 JUN 2026

NOTE: Chart not to scale.

# N1ITZ FOUR DEPARTURE (RNAV) Transition Routes



DEPARTURE ROUTE DESCRIPTION

TAKEOFF RUNWAYS 1L/R: Climb on heading 014° to intercept course 072° to KYBAD, then on track 072° to HAIDN, then on track 095° to cross OLBLU at or above 10000 and at or below 250K, then on track 092° to NIITZ, thence . . . .

TAKEOFF RUNWAY 8L: Climb on heading 079° to intercept course 090° to cross FLAAR at or above 6000 and at or below 230K, then on track 090° to GOLIE, then on track 083° to cross DBLII at or below 13000, then on track 083° to cross GLDYN at or above 12000, then on track 088° to NIITZ, thence . . . .

TAKEOFF RUNWAY 8R: Climb on heading 079° to 2682, then direct SCAAR, then on track 090° to cross FLAAR at or above 6000 and at or below 230K, then on track 090° to GOLIE, then on track 083° to cross DBLII at or below 13000, then on track 083° to cross GLDYN at or above 12000, then on track 088° to NIITZ, thence . . . .

TAKEOFF RUNWAYS 19L/R: Climb on heading 194° to 2682, then direct DEREW to cross at or below 7000, then on track 188° to CARNG, then on track 158° to cross TTONE at or above 8000, then on track 110° to cross VIVVS at or above 10000, then on track 075° to cross SGFRD at or above 17000, then on track 079° to NIITZ, thence . . . .

TAKEOFF RUNWAY 26L: Climb on heading 259° to 2682, then direct SILTT, then on track 253° to cross RUDYY at or above 4000 and at or below 230K, then on track 189° to cross SELLZ at or below 8000, then on track 127° to cross TTONE at or above 8000, then on track 110° to cross VIVVS at or above 10000, then on track 075° to cross SGFRD at or above 17000, then on track 079° to NIITZ, thence . . . .

TAKEOFF RUNWAY 26R: Climb on heading 259° to intercept course 249° to cross RUDYY at or above 4000 and at or below 230K, then on track 189° to cross SELLZ at or below 8000, then on track 127° to cross TTONE at or above 8000, then on track 110° to cross VIVVS at or above 10000, then on track 075° to cross SGFRD at or above 17000, then on track 079° to NIITZ, thence . . . .

. . . . on (transition), maintain FL190. Expect filed altitude 10 minutes after departure.

HOCEE TRANSITION (NIITZ4.HOCEE)

IWANS TRANSITION (NIITZ4.IWANS)

SSKEE TRANSITION (NIITZ4.SSKEE)

TUKRR TRANSITION (NIITZ4.TUKRR)

SW-4, 14 MAY 2026 to 11 JUN 2026

SW-4, 14 MAY 2026 to 11 JUN 2026