
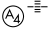
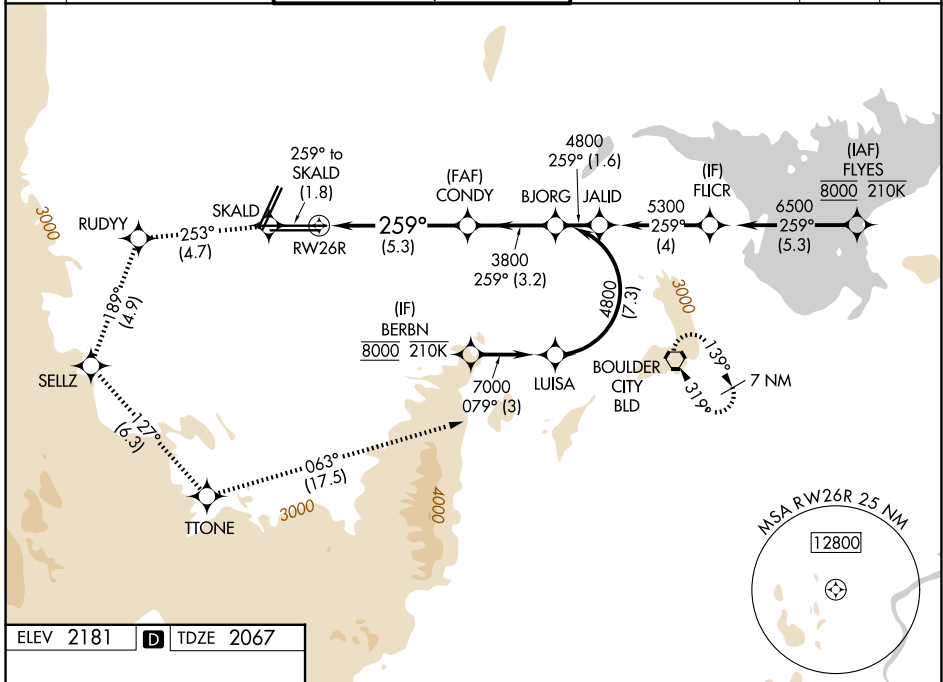


APP CRS	Rwy Ldg	12638
259°	TDZE	2067
	Apt Elev	2181

RNAV (RNP) RWY 26R

HARRY REID INTL (LAS)

RNP AR APCH-GPS.		MALS	MISSED APPROACH: Cimb to 7000 on the RNAV missed approach route to BLD VORTAC and hold. * Missed approach requires minimum climb of 230 feet per NM to 3200.			
 For uncompensated Baro-VNAV systems, procedure NA below -1°C or above 54°C.						
D-ATIS	LAS VEGAS APP CON	LAS VEGAS TOWER		GND CON	CLNC DEL	CPDLC
132.4	125.025 379.15 (West) 119.775 282.2 (East)	118.75 257.8 (Rwy 1L/19R, 1R/19L) 119.9 257.8 (Rwy 8L/26R, 8R/26L)		121.1 270.8 E of 1R/19L 121.9 254.3 W of 1L/19R	118.0	



ELEV 2181	D	TDZE 2067
-----------	----------	-----------

MIRL Rwy 1R-19L
REIL Rws 1R, 8R, 19L and 19R
HIRL Rws 1L-19R, 8L-26R and 8R-26L

7000	SKALD	RUDYY	SELLZ	TTONE	BLD
↑	✧	✧	✧	✧	✧
tr 259°	tr 253°	tr 189°	tr 127°	tr 063°	

VGSI and RNAV glidepath not coincident (VGSI Angle 3.00/TCH 84).
See planview for multiple IF locations.

CATEGORY	A	B	C	D
RNP 0.30 DA*	2457-7/8 390 (300-7/8)			
RNP 0.30 DA	2508-1 441 (400-1)			

AUTHORIZATION REQUIRED

SW-4, 14 MAY 2026 to 11 JUN 2026

SW-4, 14 MAY 2026 to 11 JUN 2026