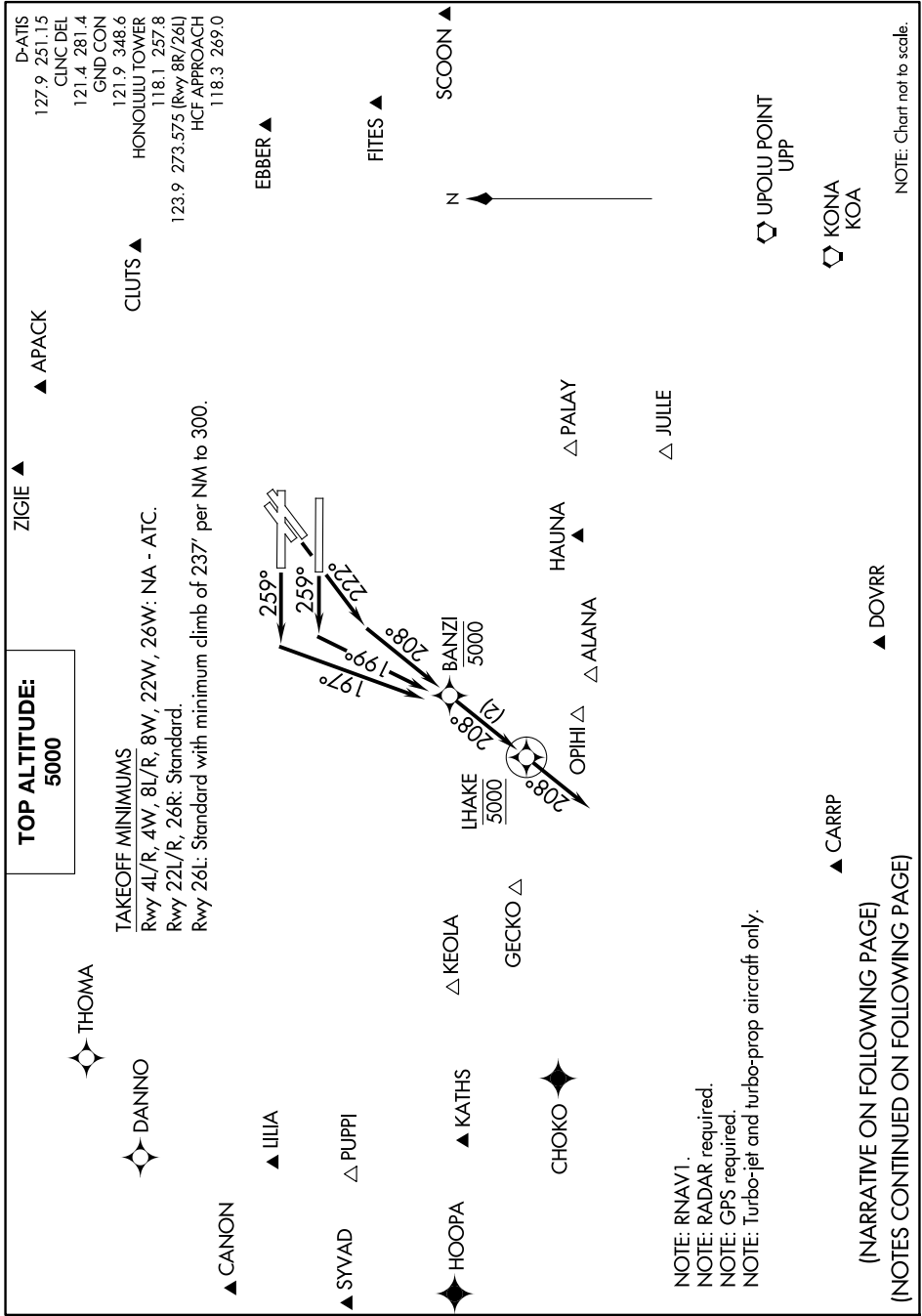


BANZI ONE DEPARTURE (RNAV)

AL-754 (FAA)

DANIEL K INOUYE INTL (HNL) (PHNL)
HONOLULU, HAWAII

PAC, 14 MAY 2026 to 09 JUL 2026



PAC, 14 MAY 2026 to 09 JUL 2026



DEPARTURE ROUTE DESCRIPTION

TAKEOFF RUNWAYS 22L/R: Climb on heading 222° to intercept course 208° to cross BANZI at or below 5000, thence . . .

TAKEOFF RUNWAY 26L: Climb on heading 259° to intercept course 199° to cross BANZI at or below 5000, thence . . .

TAKEOFF RUNWAY 26R: Climb on heading 259° to intercept course 197° to cross BANZI at or below 5000, thence . . .

. . . on track 208° to LHAKE, then on track 208° for RADAR vectors to assigned route/fix, maintain 5000 or as assigned by ATC. Expect clearance to filed altitude/flight level within 10 minutes after departure.

- NOTE: ALANA departures expect direct/vectors to ALANA/V8/V16/V20/V21.
- NOTE: APACK departures expect direct/vectors to APACK/R463.
- NOTE: CANON departures expect direct/vectors to CANON/V15.
- NOTE: CARRP departures expect direct/vectors to CARRP/A579.
- NOTE: CHOKO departures expect direct/vectors to CHOKO/R584/B326.
- NOTE: CLUTS departures expect direct/vectors to CLUTS/R465.
- NOTE: DANNO departures expect direct/vectors to DANNO.
- NOTE: DOVRR departures expect direct/vectors to DOVRR/B596.
- NOTE: EBBER departures expect direct/vectors to EBBER/R577.
- NOTE: FITES departures expect direct/vectors to FITES/R578.
- NOTE: GECKO departures expect direct/vectors to GECKO/V4/V12/V16.
- NOTE: HAUNA departures expect direct/vectors to HAUNA/V8/V16/V20/V21/LNY.
- NOTE: HOOPA departures expect direct/vectors to HOOPA/A450.
- NOTE: JULLE departures expect direct/vectors to JULLE/V16/V20/V21.
- NOTE: KATHS departures expect direct/vectors to KATHS/A450.
- NOTE: KEOLA departures expect direct/vectors to KEOLA/V16.
- NOTE: KOA departures expect direct/vectors to KOA.
- NOTE: LILIA departures expect direct/vectors to LILIA/V15.
- NOTE: OPIHI departures expect direct/vectors to OPIHI/V8/V16/V20/V21.
- NOTE: PALAY departures expect direct/vectors to PALAY/V2/V8/LNY.
- NOTE: PUPPI departures expect direct/vectors to PUPPI/V16.
- NOTE: SCOON departures expect direct/vectors to SCOON.
- NOTE: SYVAD departures expect direct/vectors to SYVAD/V16.
- NOTE: THOMA departures expect direct/vectors to THOMA.
- NOTE: UPP departures expect direct/vectors to UPP.
- NOTE: ZIGIE departures expect direct/vectors to ZIGIE/A331.

PAC. 14 MAY 2026 to 09 JUL 2026

PAC. 14 MAY 2026 to 09 JUL 2026