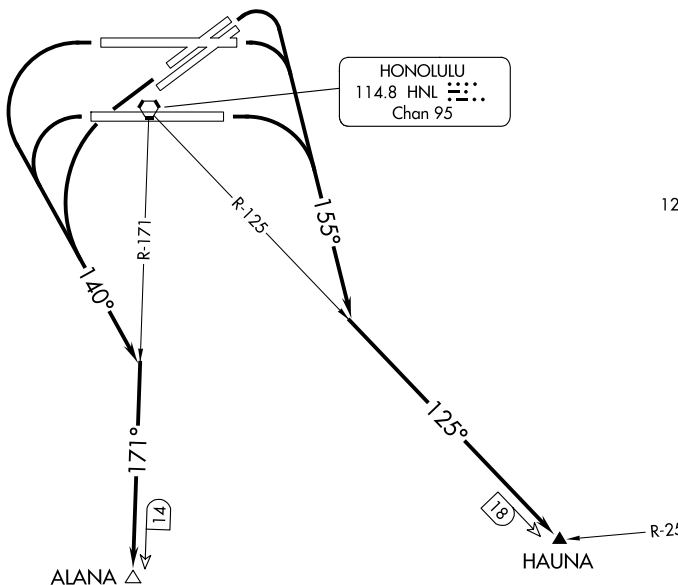


HCF APPROACH  
 EAST 124.8 317.6  
 WEST 118.3 269.0  
 D-ATIS  
 127.9 251.15  
 CLNC DEL  
 121.4 281.4  
 GND CON  
 121.9 348.6  
 HONOLULU TOWER  
 118.1 257.8  
 123.9 273.575 (Rwy 8R/26L)



TAKEOFF MINIMUMS

Rwys 4W, 8W, 22W, 26W: NA-ATC.

Rwys 22L/R, 26R: Standard.

Rwys 4L/R: Standard with minimum climb of 425' per NM to 1900, do not exceed 180K until southeast bound on 155° heading, or 1700-2½ for VCOA.

Rwy 8L: Standard with minimum climb of 310' per NM to 1000, or 1700-2½ for VCOA.

Rwy 8R: Standard with minimum climb of 270' per NM to 1000, or 1700-2½ for VCOA.

Rwy 26L: Standard with minimum climb of 237' per NM to 300, or 1700-2½ for VCOA.

(CONTINUED ON FOLLOWING PAGE)

NOTE: Chart not to scale.

DEPARTURE ROUTE DESCRIPTION

TAKEOFF RUNWAYS 4L/R, 8L/R: Climbing right turn to 3000 on heading 155° to intercept HNL R-125 to HAUNA INT before proceeding on course, or . . .

TAKEOFF RUNWAYS 22L/R, 26L/R: Climbing left turn to 3000 on heading 140° to intercept HNL R-171 to ALANA INT before proceeding on course, or . . .

. . . for visual climb over airport: obtain ATC approval for VCOA when requesting IFR clearance. Climb in visual conditions to cross Daniel K. Inouye Intl Airport southbound at 1600, continue climb to 3000 on HNL R-171 to ALANA INT before proceeding on course.

TAKEOFF OBSTACLE NOTES

- Rwy 4L: Multiple lights beginning 630' from DER, 236' left of centerline, 102' right of centerline, up to 84' AGL/92' MSL.  
 Light on building 669' from DER, 394' left of centerline, 29' AGL/37' MSL.  
 Stack on building 2488' from DER, 219' right of centerline, 72' AGL/80' MSL.  
 Multiple trees beginning 1253' from DER, 209' left of centerline, 935' right of centerline, up to 64' AGL/72' MSL.  
 Bush 450' from DER, 234' left of centerline, 14' AGL/22' MSL.
- Rwy 4R: Stack on building, 2442' from DER, 283' left of centerline, 72' AGL/80' MSL.  
 Multiple trees beginning 1206' from DER, 711' left of centerline, 433' right of centerline, up to 64' AGL/72' MSL.  
 Multiple lights beginning 1072' from DER, 399' left of centerline, 504' right of centerline, up to 36' AGL/44' MSL.  
 Pole 2110' from DER, 951' left of centerline, 59' AGL/67' MSL.
- Rwy 22L: Multiple bushes beginning 265' from DER, 396' right of centerline, up to 17' AGL/31' MSL.  
 Tree 1065' from DER, 499' right of centerline, 30' AGL/38' MSL.
- Rwy 22R: Rod on obstruction light ASR 1451' from DER, 827' right of centerline, 76' AGL/84' MSL.  
 Tree 853' from DER, 308' right of centerline, 43' AGL/51' MSL.
- Rwy 26L: Ship 1.1 NM from DER, on centerline, 208' AGL/208' MSL.
- Rwy 26R: Multiple light poles beginning 2120' from DER, 813' right of centerline, up to 105' AGL/111' MSL.

PAC, 14 MAY 2026 to 09 JUL 2026

PAC, 14 MAY 2026 to 09 JUL 2026