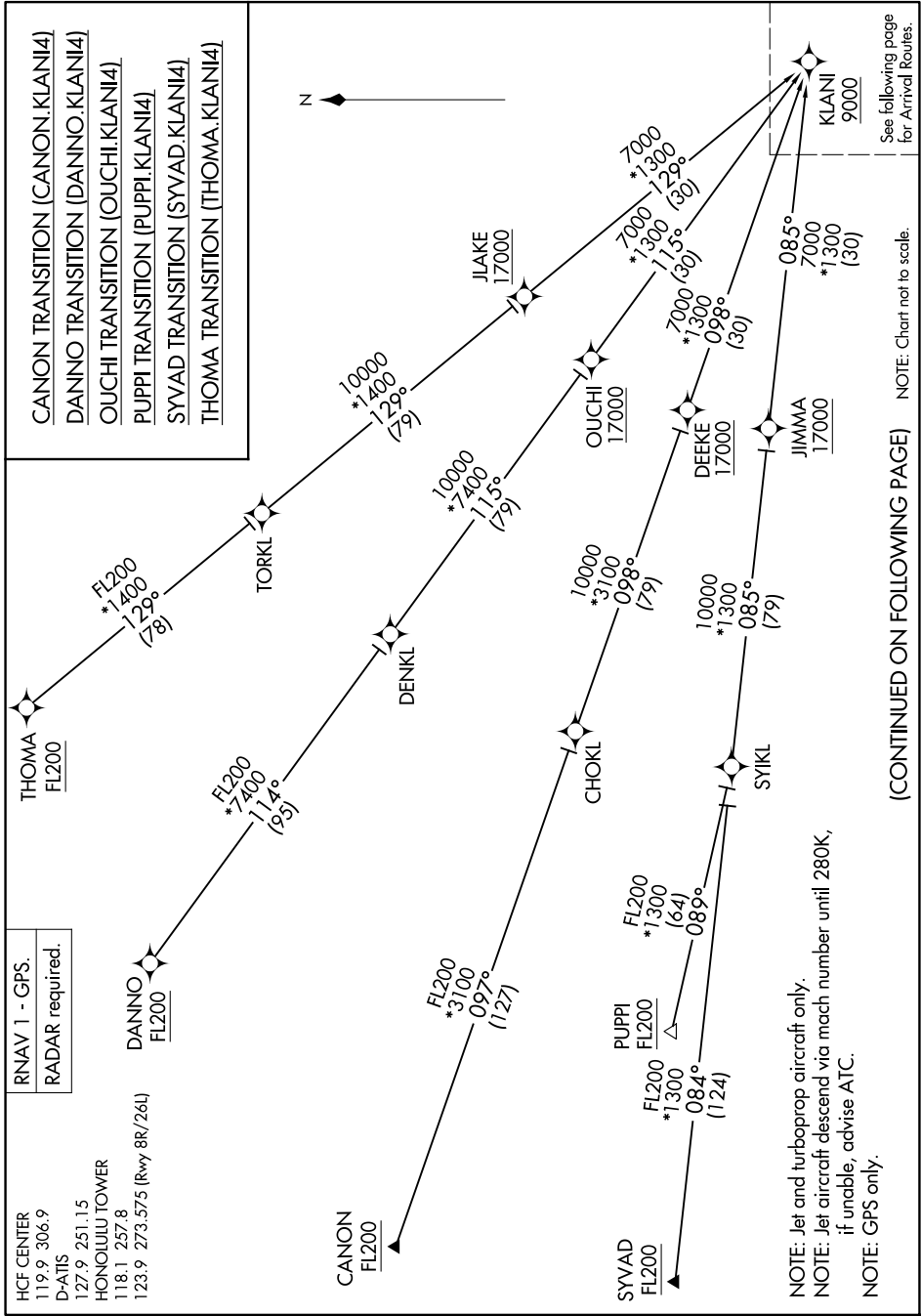


KLANI FOUR ARRIVAL (RNAV) Transition Routes

HONOLULU, HAWAII

PAC, 14 MAY 2026 to 09 JUL 2026



KLANI FOUR ARRIVAL (RNAV) Transition Routes

HONOLULU, HAWAII

(CONTINUED ON FOLLOWING PAGE)

PAC, 14 MAY 2026 to 09 JUL 2026

KLANI FOUR ARRIVAL (RNAV) Arrival Routes

PAC: 14 MAY 2026 to 09 JUL 2026

ARRIVAL ROUTE DESCRIPTION

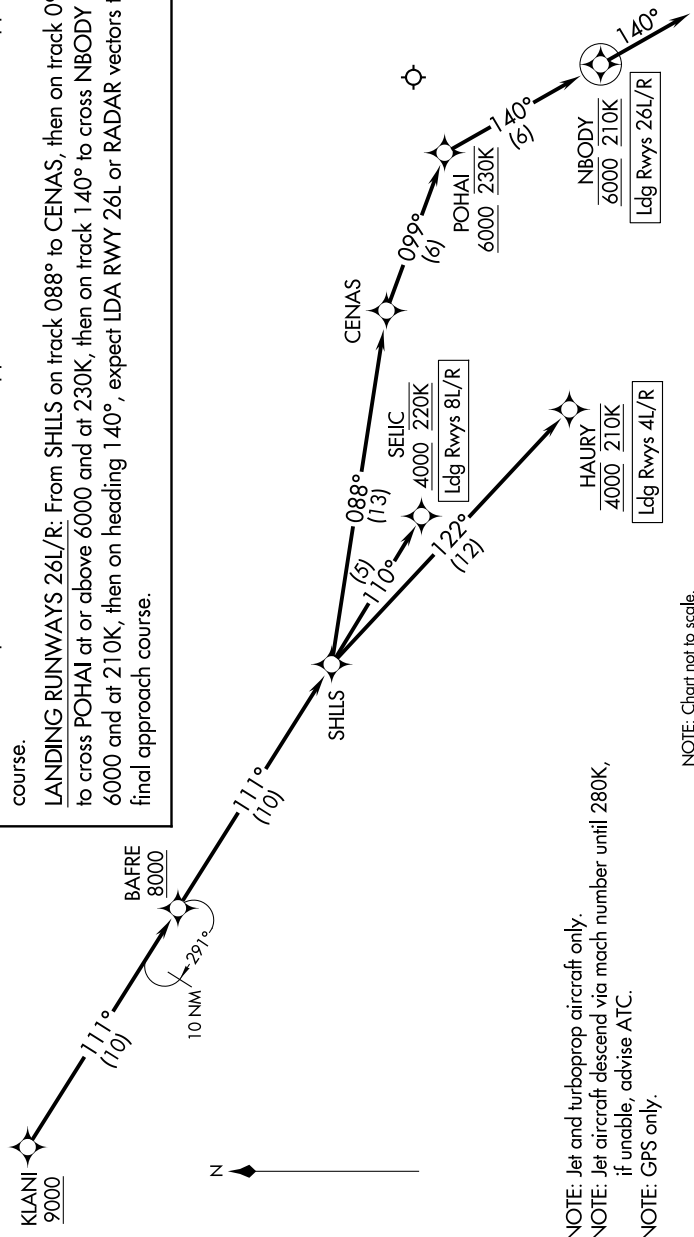
From KLANI on track 111° to cross BAFRE at or above 8000, then on track 111° to SHLLS.

LANDING RUNWAYS 4L/R: From SHLLS on track 122° to cross HAURY at 4000 and at 210K. Expect ILS or RNAV RWY 4R approach or RADAR vectors to final approach course.

LANDING RUNWAYS 8L/R: From SHLLS on track 110° to cross SELIC at or above 4000 and at 220K. Expect ILS or RNAV RWY 8L approach or RADAR vectors to final approach course.

LANDING RUNWAYS 26L/R: From SHLLS on track 088° to CENAS, then on track 099° to cross POHAI at or above 6000 and at 230K, then on track 140° to cross NBODY at 6000 and at 210K, expect LDA RWY 26L or RADAR vectors to final approach course.

RNAV 1 - GPS. RADAR required.
HCF CENTER 119.9 306.9 D-ATIS 127.9 251.15 HONOLULU TOWER 118.1 257.8 123.9 273.575 (Rwy 8R/26L)



NOTE: Jet and turboprop aircraft only.
 NOTE: Jet aircraft descend via mach number until 280K, if unable, advise ATC.
 NOTE: GPS only.

NOTE: Chart not to scale.

PAC: 14 MAY 2026 to 09 JUL 2026