

OPIHI THREE DEPARTURE

AL-754 (FAA)

DANIEL K INOUYE INTL (HNL) (PHNL)
HONOLULU, HAWAII

PAC, 14 MAY 2026 to 09 JUL 2026

NOTE: Honolulu departures from Rwy 4L/R and 8L/R must complete right turn to assigned heading within 2 NM of departure end of runway. Cross CKH R-240 at or above 2500.

NOTE: Honolulu departures Rwy 26L/R left turn to assign heading must be completed within 2 NM of departure end of runway (HNL 3 DME).

HCF APPROACH
118.3 269.0
D-ATIS
127.9 251.15
CLINC DEL
121.4 281.4
GND CON
121.9 348.6
HONOLULU TOWER
118.1 257.8
123.9 273.575 (Rwy 8R/26L)



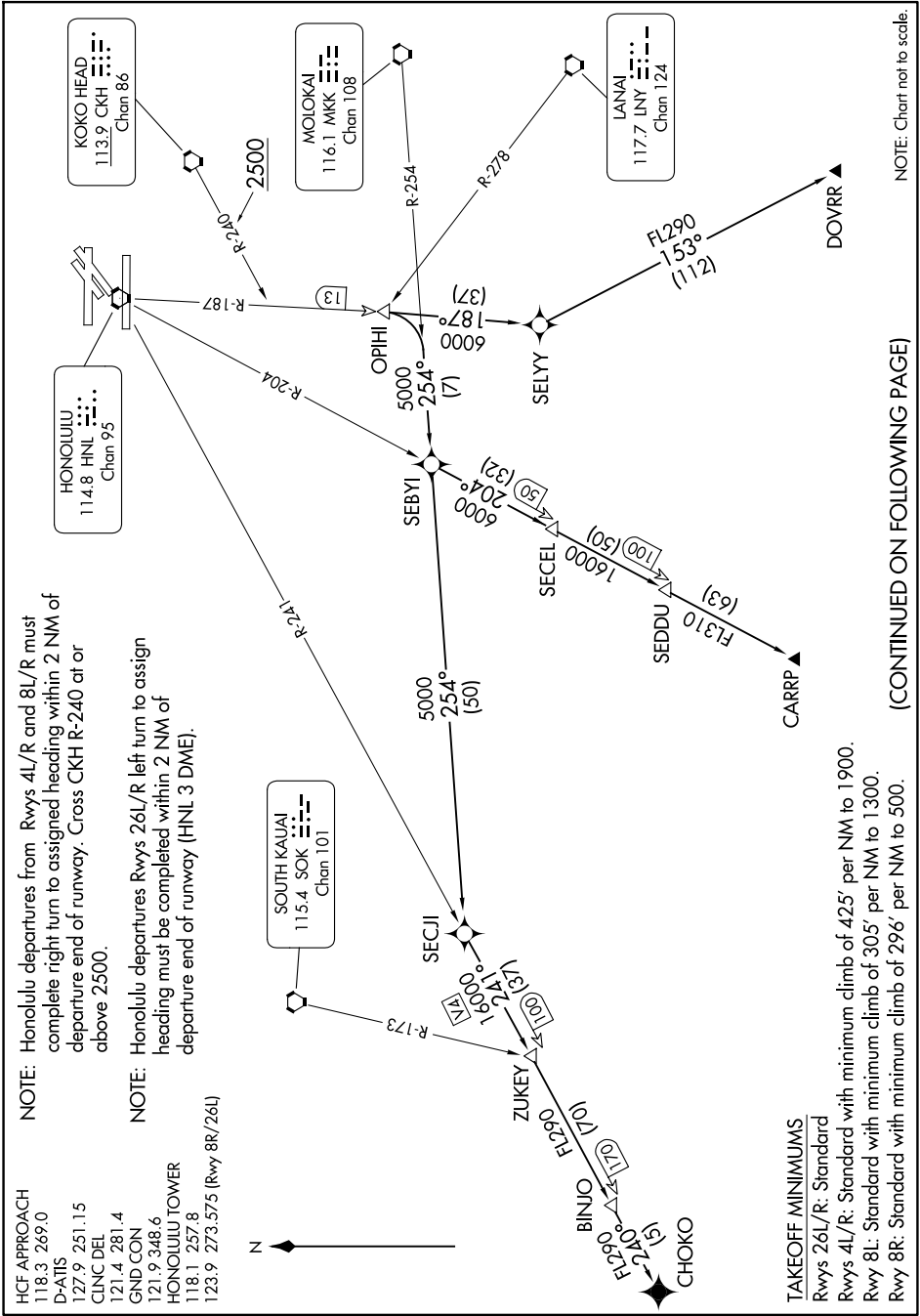
SOUTH KAUIAI
115.4 SOK
Chan 101

HONOLULU
114.8 HNL
Chan 95

KOKO HEAD
113.9 CKH
Chan 86

MOLOKAI
116.1 MKK
Chan 108

LANAI
117.7 LNY
Chan 124



NOTE: Chart not to scale.

(CONTINUED ON FOLLOWING PAGE)

PAC, 14 MAY 2026 to 09 JUL 2026

OPIHI THREE DEPARTURE

HONOLULU, HAWAII
DANIEL K INOUYE INTL (HNL) (PHNL)

TAKEOFF MINIMUMS
Rwys 26L/R: Standard
Rwys 4L/R: Standard with minimum climb of 425' per NM to 1900.
Rwy 8L: Standard with minimum climb of 305' per NM to 1300.
Rwy 8R: Standard with minimum climb of 296' per NM to 500.



DEPARTURE ROUTE DESCRIPTION

Turn right/left to heading assigned by Tower, expect vectors to OPIHI, maintain 5000; then on (transition). Expect clearance to enroute altitude/flight level at OPIHI.

CARRP TRANSITION (OPIHI3.CARRP): From over OPIHI right turn to intercept MKK R-254 to SEBYI, then on HNL R-204 to CARRP.

CHOKO TRANSITION (OPIHI3.CHOKO): From over OPIHI right turn to intercept MKK R-254 to SECJI, then on HNL R-241 to BINJO, then on track 240° to CHOKO.

DOVRR TRANSITION (OPIHI3.DOVRR): From over OPIHI on HNL R-187 to SELYY, then on track 153° to DOVRR.

PAC: 14 MAY 2026 to 09 JUL 2026

PAC: 14 MAY 2026 to 09 JUL 2026