

# GAVIOTA THREE DEPARTURE (GVO3.GVO)

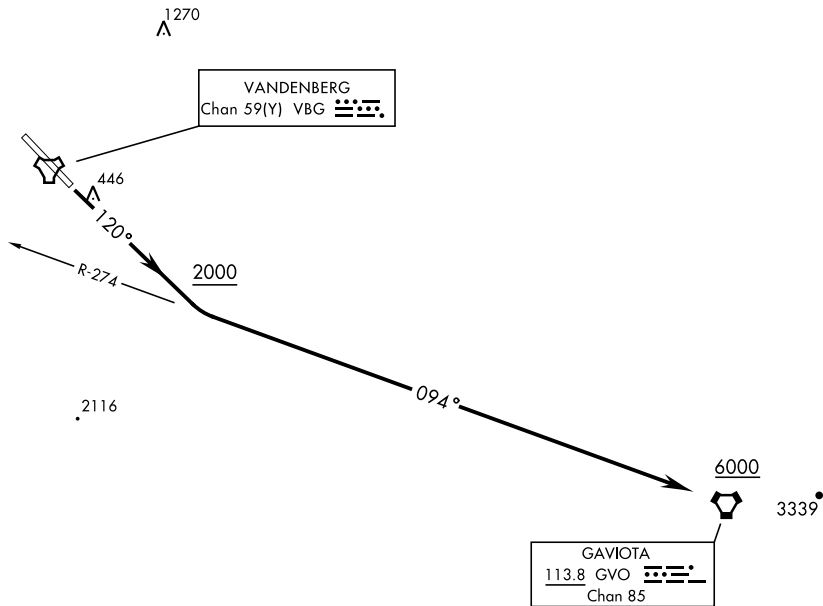
LOMPOC, CALIFORNIA

ATIS  
 133.125 257.975  
 GND CON  
 121.75 275.8  
 CLNC DEL  
 121.75 275.8  
 VANDENBERG TOWER ★  
 124.95 326.2  
 SANTA BARBARA DEP CON ★  
 124.15 327.8

[USSF]

Rwy	Knots	60	120	180	240	300	360
12	V/V(fpm)	330	660	990	1320	1650	1980

Minimum Climb Rate to 1500



SW-3, 14 MAY 2026 to 11 JUN 2026

SW-3, 14 MAY 2026 to 11 JUN 2026

Use extreme caution for extensive UAS ops in the vicinity



## DEPARTURE ROUTE DESCRIPTION

TAKEOFF RWY 12: Climb on track 120° to 2000. Then climbing left turn to intercept the GVO VORTAC R-274 inbound to GVO. Cross GVO at or above 6000. Expect vectors to first filed fix/route prior to GVO.

# GAVIOTA THREE DEPARTURE (GVO3.GVO)

Amdt 1 02DEC21

LOMPOC, CALIFORNIA

VANDENBERG SFB (KVBG)