

# HI-TACAN RWY 12

TACAN VBG Chan <b>59(Y)</b>	APCH CRS <b>129°</b>	Rwy Idg <b>15,000</b> TDZE <b>265</b> Arprt Elev <b>368</b>
--------------------------------	-------------------------	---

[USSF]

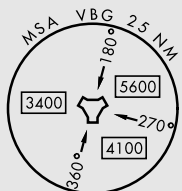
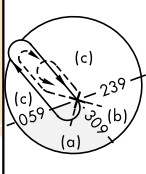
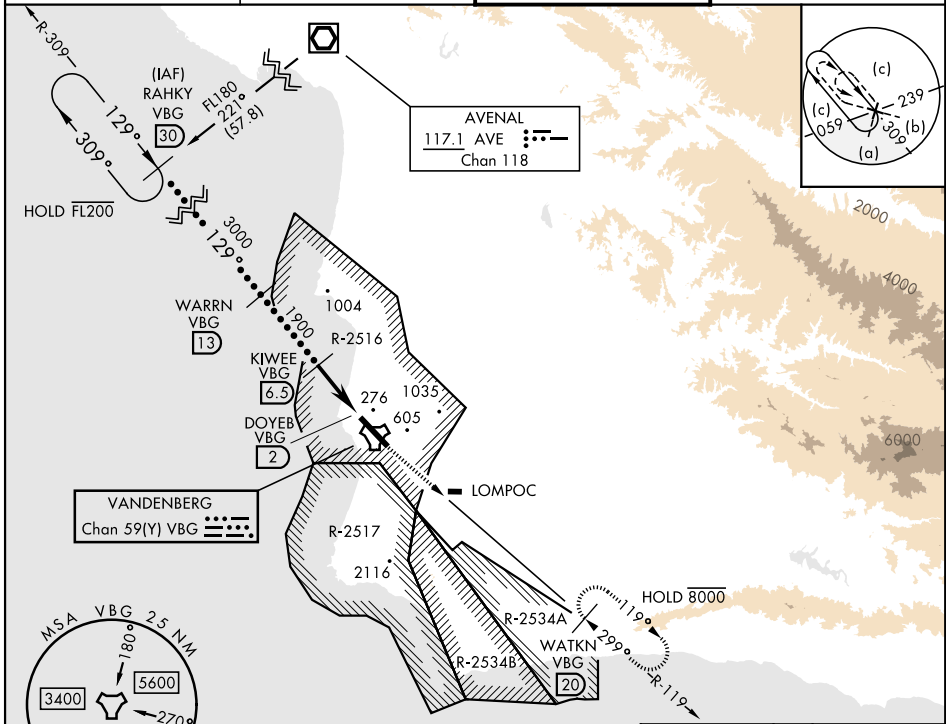
VANDENBERG SFB (KVBG)

▲ \* When ALS inop, increase CAT CDE vis to 1 3/8 miles.

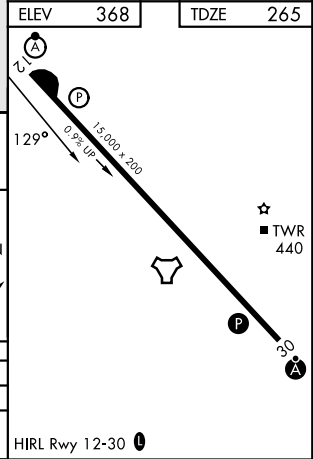
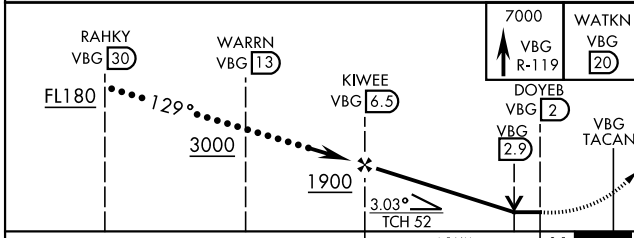


MISSED APPROACH: Climb out VBG TACAN R-119 until 20 DME (WATKN) and hold. Continue climb in hold maintain 7000.

ATIS <b>133.125 257.975</b>	SANTA BARBARA APP/DEP CON ★ <b>124.15 327.8</b>	TOWER ★ <b>124.95</b> (CTAF) <b>326.2</b>	GND CON <b>121.75 275.8</b>
--------------------------------	---	--	--------------------------------



ELEV	368	TDZE	265
------	-----	------	-----



CATEGORY	C	D	E
S-12*	740/50	475	(400-1)
CIRCLING	1020-1 3/4 652 (700-1 3/4)	1180-2 3/4 812 (900-2 3/4)	1560-3 1192 (1200-3)

# HI-TACAN RWY 12

SW-3, 14 MAY 2026 to 11 JUN 2026

SW-3, 14 MAY 2026 to 11 JUN 2026