

HI-TACAN RWY 30

TACAN VBG Chan 59(Y)	APCH CRS 299°	Rwy Idg 15,000 TDZE 368 Arpt Elev 368
--------------------------------	-------------------------	--

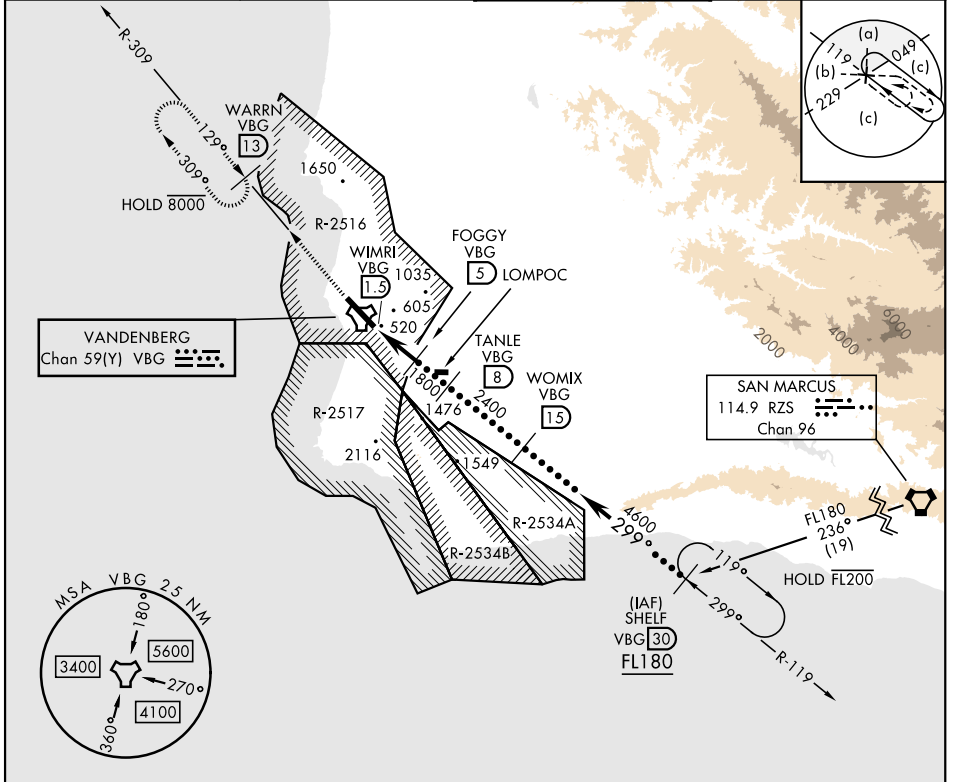
[USSF]

VANDENBERG SFB (KVBG)

ALSF-2

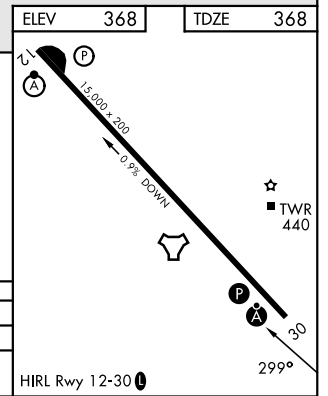
MISSED APPROACH: Climb out VBG TACAN R-309 to WARRN and hold. Continue climb in hold maintain 4000.

ATIS 133.125 257.975	SANTA BARBARA APP/DEP CON * 124.15 327.8	TOWER * 124.95 (CTAF) 326.2	GND CON 121.75 275.8
---------------------------------------	---	--	---------------------------------------



EMERG SAFE ALT 100 NM 11,100

4000 VBG R-309 WARRN VBG 13	VBG 2.5 WIMRI VBG 1.5	FOGGY VBG 5	TANLE VBG 8	WOMIX VBG 15	SHELF VBG 30
3.20° TCH 71		1800 2400 4600 FL180			
0.5 3.5 NM					
CATEGORY	C		D		E
S-30 *	920/60 552 (600-1½)				
CIRCLING	1020-1¾ 652 (700-1¾)	1180-2¾ 812 (900-2¾)		1560-3 1192 (1200-3)	



HI-TACAN RWY 30

SW-3, 14 MAY 2026 to 11 JUN 2026

SW-3, 14 MAY 2026 to 11 JUN 2026