

ILS or LOC/DME RWY 30

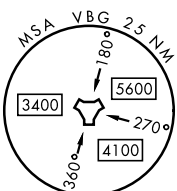
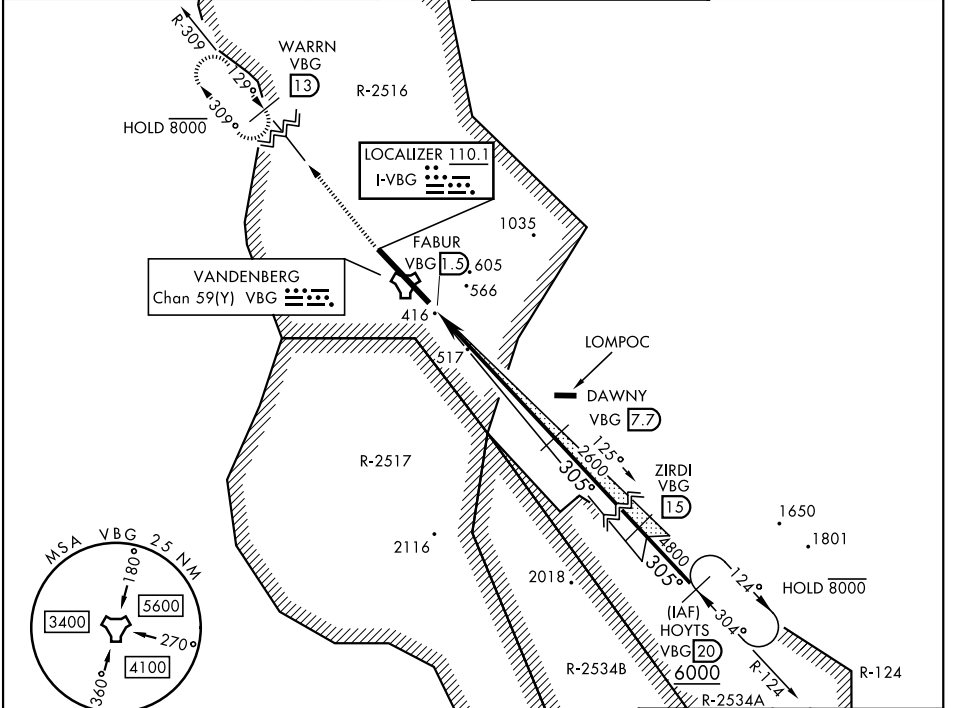
LOC I-VBG 110.1	APCH CRS 305°	Rwy Ldg 15,000 TDZE 368 Arpt Elev 368
---------------------------	-------------------------	--

[USSF]

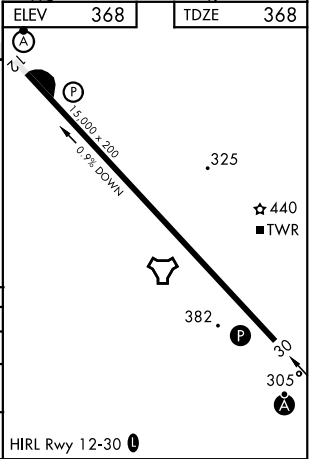
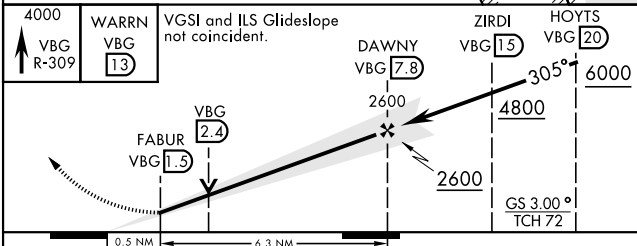
VANDENBERG SFB (KVBG)

DME required	ALSF-2	MISSED APPROACH: Climb out VBG TACAN R-309 to WARRN and hold. Continue climb in hold maintain 4000.
--------------	--------	---

ATIS 133.125 257.975	SANTA BARBARA APP CON★ 124.15 327.8	TOWER★ 124.95 (CTAF) 326.2	GND CON 121.75 275.8
--------------------------------	--	---	--------------------------------



EMERG SAFE ALT 100 NM 11,100	ELEV 368	TDZE 368
------------------------------	----------	----------



CATEGORY	A	B	C	D	E
S-ILS 30*	568/24		200	(200-½)	
S-LOC 30**	900/24	532 (600-½)	900/55 532 (600-1)		
CIRCLING	980-1 612 (700-1)	1000-1 632 (700-1)	1020-1¾ 652 (700-1¾)	1180-2¾ 812 (900-2¾)	1560-3 1192(1200-3)

ILS or LOC/DME RWY 30

SW-3, 14 MAY 2026 to 11 JUN 2026

SW-3, 14 MAY 2026 to 11 JUN 2026