

ILS Y or LOC/DME Y RWY 24R

LOC/DME I-NKX 111.15 Chan 48(Y)	APCH CRS 243°	Rwy Idg TDZE Arpt Elev	24L 8001 477 477	24R 12,000 475 477
---	-------------------------	------------------------------	--	--

[USN]

MIRAMAR MCAS (JOE FOSS FLD) (KNKX)

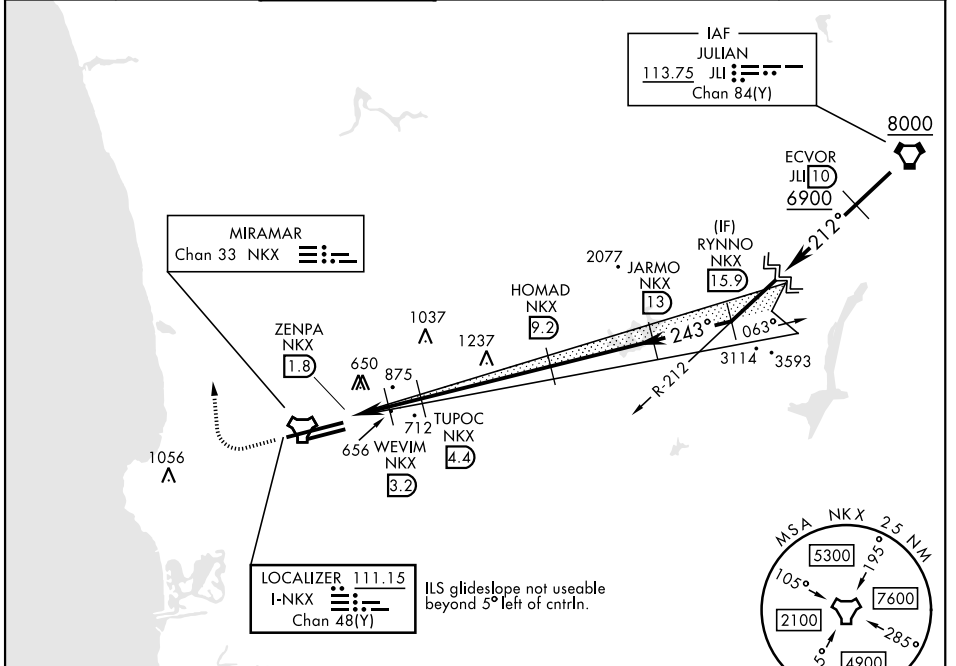
TACAN or RADAR required

* When ALS inop, increase vis to ¾ mile.
 ** When ALS inop, increase CAT AB vis to 1 mile, CAT CDE vis to 1 ½ miles.
 *** CAT E circling not authorized S of Rwy 6R-24L.

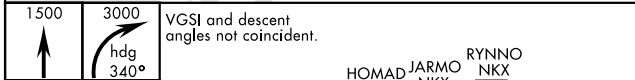


MISSED APPROACH: Climb to 1500, then climbing right turn to 3000 via heading 340°. Expect radar vectors.

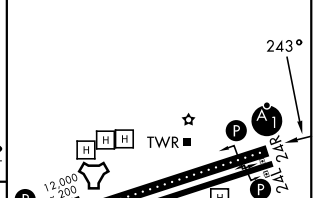
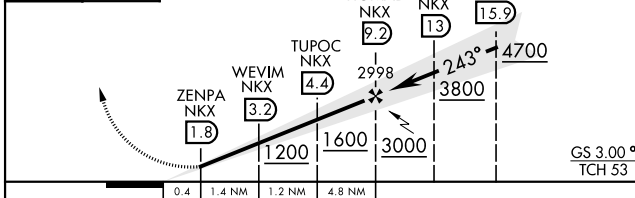
ATIS * 133.475 352.0	SOCAL APP CON 132.2 269.1	FOSS TOWER * 135.2 298.925	GND CON 128.625 307.325	LA CENTER 291.7	ASR/ PAR
--	---	--	---	---------------------------	-------------



EMERG SAFE ALT 100 NM 13,600



ELEV 477	TDZE 24L 477
	TDZE 24R 475



CATEGORY	A	B	C	D	E
S-ILS 24R*	675 - ½		200	(200-½)	
S-LOC 24R**	920-½	445 (500-½)	920-¾	445 (500-¾)	
SIDESTEP 24L	920-1	443 (500-1)	920-1½ 443 (500-1½)	920-2 443 (500-2)	
CIRCLING***	940-1 463 (500-1)	960-1 483 (500-1)	960-1½ 483 (500-1½)	1180-2¼ 703 (800-2¼)	1360-3 883 (900-3)

HIRL Rwy 6L-24R
HIRL Rwy 6R-24L

ILS Y or LOC/DME Y RWY 24R

SW-3, 14 MAY 2026 to 11 JUN 2026

SW-3, 14 MAY 2026 to 11 JUN 2026