

SWOLF-NINE DEPARTURE (SWOLF9 • SWOLF)

MIRAMAR MCAS (JOE FOSS FLD) (KNKX)

SAN DIEGO, CALIFORNIA

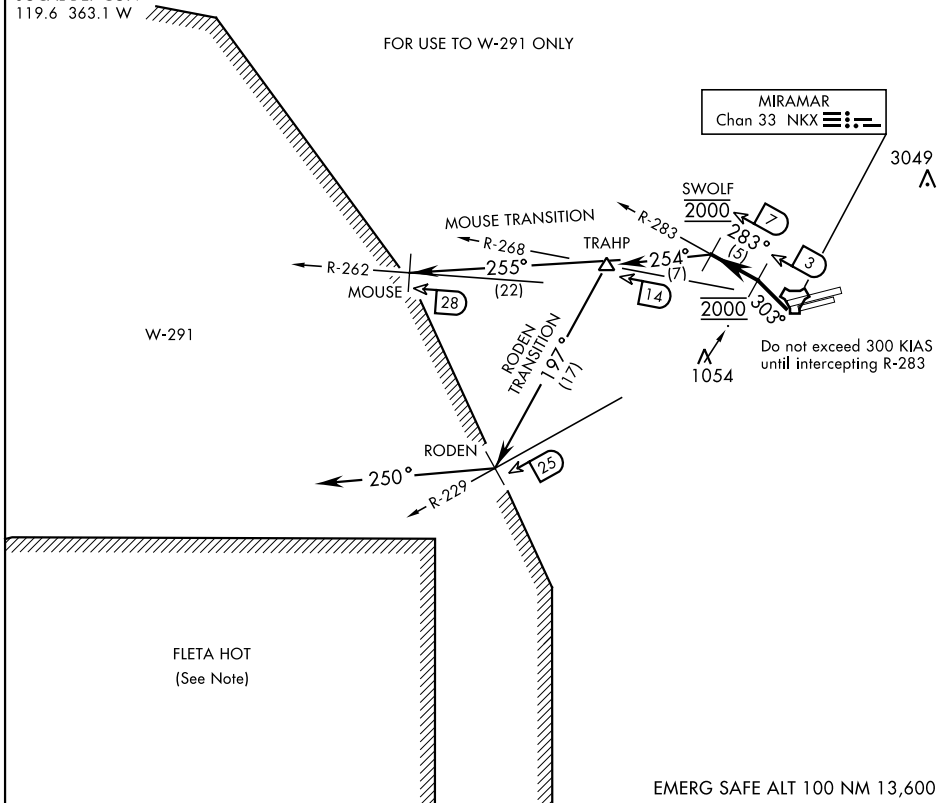
ATIS ★ 133.475 352.0
 CLNC DEL
 125.975 254.325
 GND CON
 128.625 307.325
 FOSS TOWER ★
 135.2 298.925
 SOCAL DEP CON
 119.6 363.1 W

SHL-903 [USN]

Rwy	Knots	60	120	180	240	300	360
24L/R	V/V(fpm)	780	1560	2340	3120	3900	4680

ATC Climb Rate to 2000

FOR USE TO W-291 ONLY



SW-3, 14 MAY 2026 to 11 JUN 2026

SW-3, 14 MAY 2026 to 11 JUN 2026

DEPARTURE ROUTE DESCRIPTION

TAKE-OFF RWY 24L/R: Climbing right turn to 2000 via heading 303° to intercept and proceed via NKX TACAN R-283 to SWOLF. Complete turn within NKX 2 DME. Cross NKX R-283/3 DME at 2000 mandatory. Maintain 2000 at SWOLF mandatory. Thence...

MOUSE TRANSITION (SWOLF9 • MOUSE): Turn left heading 255° to intercept NKX R-262 at MOUSE. Maintain 2000 for entry into W-291.

(Continued on next page)

SWOLF-NINE DEPARTURE (SWOLF9 • SWOLF)

SAN DIEGO, CALIFORNIA

MIRAMAR MCAS (JOE FOSS FLD) (KNKX)

SHL-903 [USN]

DEPARTURE ROUTE DESCRIPTION

(Continued)

RODEN TRANSITION (SWOLF9 • RODEN): Turn left heading 254 ° to intercept NKX R-268 at TRAHP. Then turn left heading 197° to intercept NKX R-229 at RODEN. Maintain 2000 for entry into W-291 via heading 250°.

NOTE:

- (1) FLETA HOT-ACTIVE FIRING AREA (DANGER, REMAIN CLEAR).
- (2) ALL AIRCRAFT SHOULD MAINTAIN LAST ASSIGNED HEADING/RADIAL AND ALTITUDE TO AVOID INBOUND MILITARY OR CIVIL AIRCRAFT AT HIGHER ALTITUDES!

SW-3, 14 MAY 2026 to 11 JUN 2026

SW-3, 14 MAY 2026 to 11 JUN 2026