

25275

POINT MUGU NAS (NAVAL BASE VENTURA CO) (KNTD)

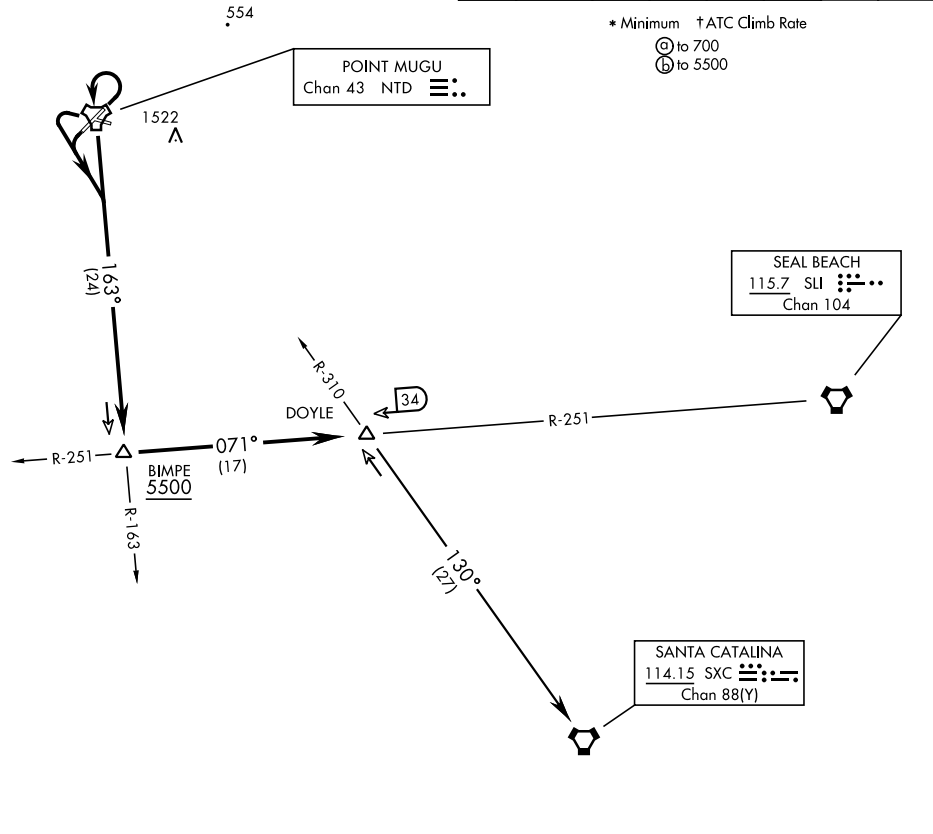
DOYLE-NINE DEPARTURE (DOYLE 9.DOYLE) [USN]

OXNARD, CALIFORNIA

ATIS ★ 125.55 363.05
 TOWER ★
 124.85 290.375
 DEP CON ★
 128.65 307.275

TACAN required

Rwy	Knots	60	120	180	240	300	360
*03 (A)	V/V(fpm)	205	410	615	820	1025	1230
†03 (B)	V/V(fpm)	215	430	645	860	1075	1290
†21 (B)	V/V(fpm)	232	464	696	928	1160	1392
†27 (B)	V/V(fpm)	212	424	636	848	1060	1272



* Minimum † ATC Climb Rate
 (A) to 700
 (B) to 5500

SW-3, 14 MAY 2026 to 11 JUN 2026

SW-3, 14 MAY 2026 to 11 JUN 2026

DEPARTURE ROUTE DESCRIPTION

TAKEOFF RWY 3: Climbing left turn within 3 DME of NTD TACAN, direct NTD, thence...

TAKEOFF RWY 21, 27: Left turn, thence...

...intercept NTD R-163 and via NTD R-163 to BIMPE (NTD R-163/24 DME), then via SLI VORTAC R-251 to DOYLE, then via assigned routing. Cross BIMPE at or above 5500.

SANTA CATALINA TRANSITION (DOYLE 9.SXC): DOYLE (SLI R-251/34 DME) to SANTA CATALINA VORTAC via SXC R-310. Then as filed.

DOYLE-NINE DEPARTURE (DOYLE 9.DOYLE)

OXNARD, CALIFORNIA
POINT MUGU NAS (NAVAL BASE VENTURA CO) (KNTD)