

OXNARD, CALIFORNIA


ILS or LOC RWY 3

LOC/DME I-NTD 109.3 Chan 30	APCH CRS 032°	Rwy Idg 11,102 TDZE 10 Arprt Elev 13
-------------------------------------------------	-------------------------	-----------------------------------------------------------------

[USN] POINT MUGU NAS (NAVAL BASE VENTURA CO) (KNTD)

DME or RADAR required.

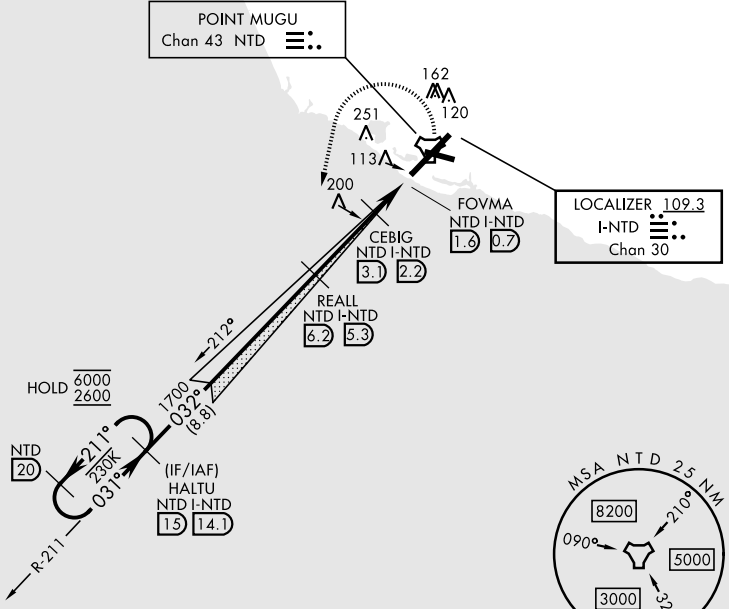
▼ * When ALS inop, increase vis to 1 mile.
 ** Circling not authorized SE of Rwy 3-21.
 CAT A remain within 1.3 NM, CAT B remain within 1.5 NM,
 CAT C remain within 1.7 NM, CAT D remain within 2.3 NM.

SALSF


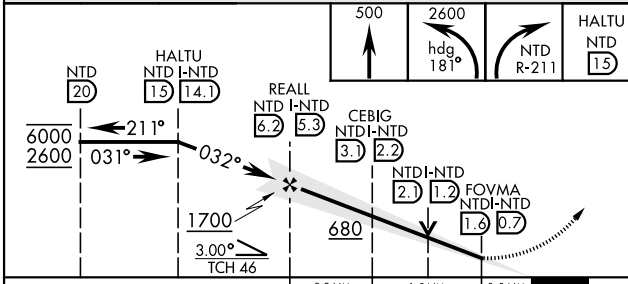
MISSED APPROACH: Climb to 500, then climbing left turn to 2600 on heading 181° and NTD TACAN R-211 to HALTU and hold.

ATIS ★ 125.55 363.05	APP CON 128.65 307.275	TOWER ★ 124.85 290.375	GND CON 121.6 360.2	ASR/ PAR
--------------------------------	----------------------------------	----------------------------------	-------------------------------	-------------

ILS glideslope not useable beyond 8 NM.

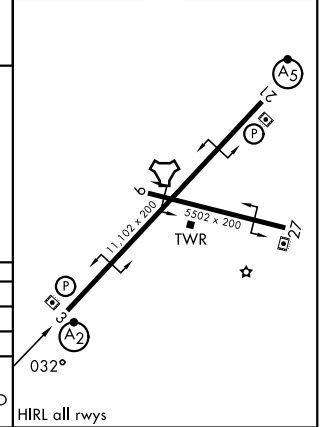


EMERG SAFE ALT 100 NM 12,300



ELEV	13	TDZE	10
------	----	------	----

CATEGORY	A	B	C	D	E
S-ILS 3	210-¾	200		(200-¾)	
S-LOC 3*	380-¾	370		(400-¾)	
CIRCLING**	420-1 407 (500-1)	520-1 507 (600-1)	520-1½ 507 (600-1½)	580-2 567 (600-2)	NOT AUTHORIZED



OXNARD, CALIFORNIA 34° 07' N - 119° 07' W POINT MUGU NAS (NAVAL BASE VENTURA CO) KNTD

Orig 27NOV25
PANS-OPS

ILS or LOC RWY 3

SW-3, 14 MAY 2026 to 11 JUN 2026

SW-3, 14 MAY 2026 to 11 JUN 2026