

TACAN RWY 21

TACAN NTD Chan 43	APCH CRS 216°	Rwy ldg 11,102 TDZE 13 Arprt Elev 13
----------------------	------------------	--

[UN]

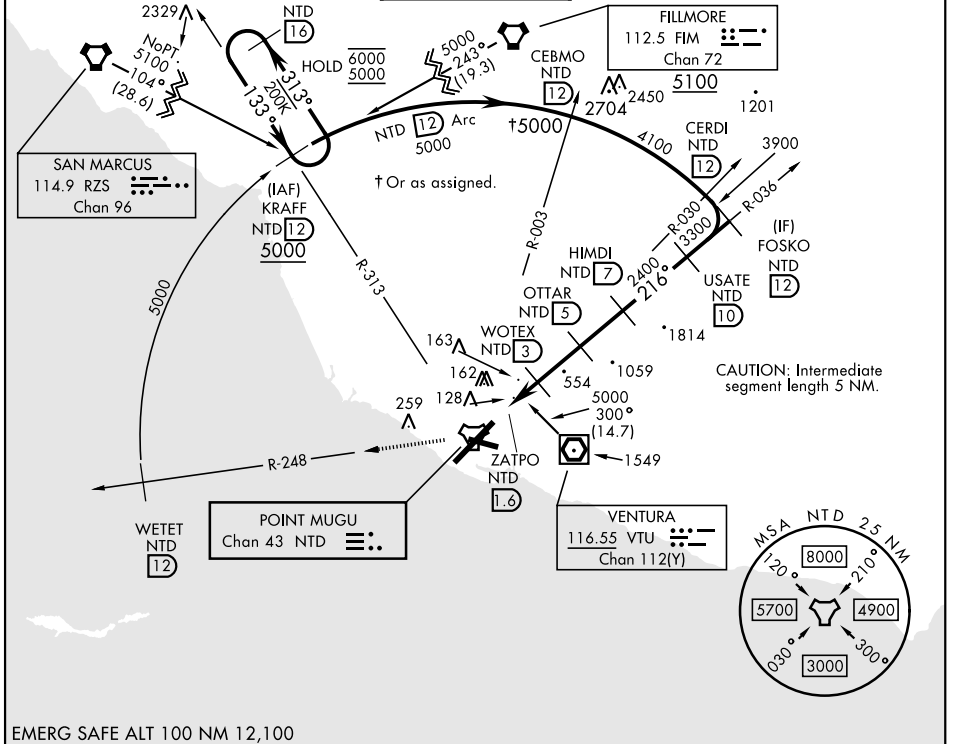
POINT MUGU NAS (NAVAL BASE VENTURA CO) (KNTD)

▼ * When ALS inop, increase CAT AB vis to 1 mile, CAT CD vis to 1½ miles.
 ** Circling not authorized E of Rwy 3-21.



MISSED APPROACH: Climb to 5000 via NTD TACAN R-036 to NTD, then via NTD R-248 to WETET. Arc NW on NTD 12 DME arc to KRAFF and hold.

ATIS ★ 125.55 363.05	APP CON ★ 128.65 307.275	TOWER ★ 124.85 290.375	GND CON 121.6 360.2	ASR/PAR
--------------------------------	------------------------------------	----------------------------------	-------------------------------	---------

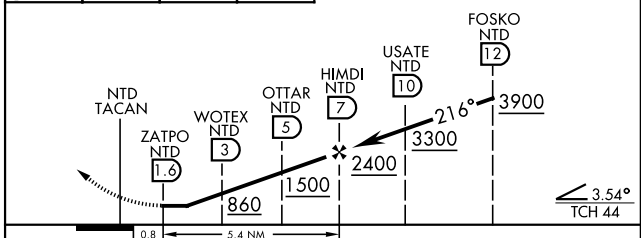


SW-3, 14 MAY 2026 to 11 JUN 2026

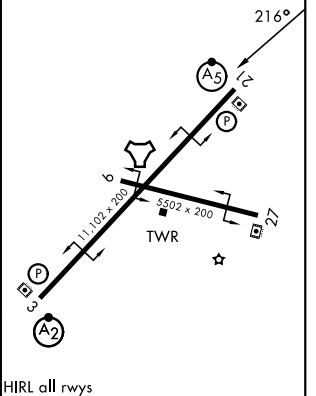
SW-3, 14 MAY 2026 to 11 JUN 2026

EMERG SAFE ALT 100 NM 12,100

5000 NTD R-036	NTD	WETET NTD 12	Arc NW to KRAFF	VGSI and descent angles not coincident.
----------------	-----	--------------	-----------------	---



ELEV 13	TDZE 13
---------	---------



CATEGORY	A	B	C	D
S-21 *	460-¾ 447 (500-¾)		460-⅞ 447 (500-⅞)	
CIRCLING **	460-1 447 (500-1)	520-1 507 (600-1)	520-1½ 507 (600-1½)	600-2 587 (600-2)

HIRL all rwys

OXNARD, CALIFORNIA 34°07'N-119°07'W POINT MUGU NAS (NAVAL BASE VENTURA CO) (KNTD)

TACAN RWY 21