

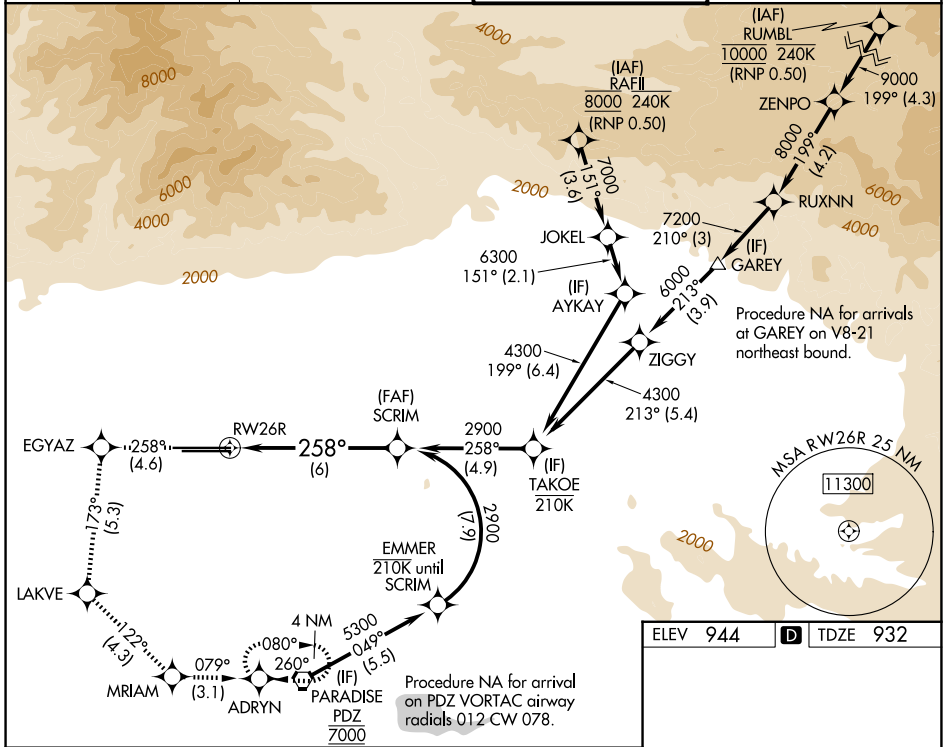
APP CRS	Rwy Ldg	<b>12197</b>
<b>258°</b>	TDZE	<b>932</b>
	Apt Elev	<b>944</b>

# RNAV (RNP) Z RWY 26R

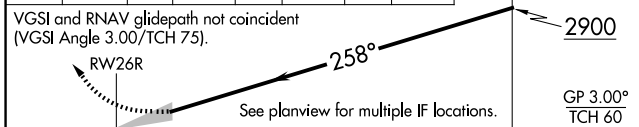
ONTARIO INTL (ONT)

RNP AR APCH - GPS.	ALSf-2	MISSED APPROACH: Climb to 3400 on track 258° to EGYAZ and track 173° to LAKVE and track 122° to MRIAM and on track 079° to ADRYN and hold.
<p>▼ For uncompensated Baro-VNAV systems, procedure NA below 1°C or above 54°C. For inop ALS, increase RNP 0.12 visibility all Cats to RVR 4500, RNP 0.21 visibility all Cats to RVR 5500, RNP 0.30 visibility all Cats to RVR 6000.</p>		

D-ATIS <b>124.25</b>	SOCAL APP CON <b>127.0 318.2</b>	ONTARIO TOWER <b>120.6 360.775</b>	GND CON <b>121.9 257.8</b>
-------------------------	-------------------------------------	---------------------------------------	-------------------------------

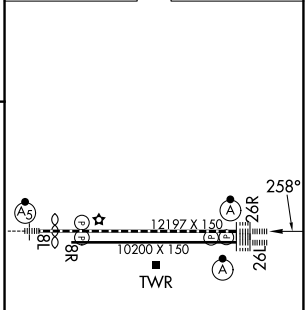


3400	EGYAZ	LAKVE	MRIAM	ADRYN	SCRIM
tr 258°	tr 173°	tr 122°	tr 079°		2900



CATEGORY	A	B	C	D
RNP 0.12 DA		1239/40	307 (300-¾)	
RNP 0.21 DA		1297/40	365 (400-¾)	
RNP 0.30 DA		1321/40	389 (400-¾)	

ELEV 944	<b>D</b> TDZE 932
----------	-------------------



TDZL/RCLS Rwy 8L, 26L and 26R
HIRL Rwy 8L-26R and 8R-26L

## AUTHORIZATION REQUIRED

SW-3, 14 MAY 2026 to 11 JUN 2026

SW-3, 14 MAY 2026 to 11 JUN 2026