

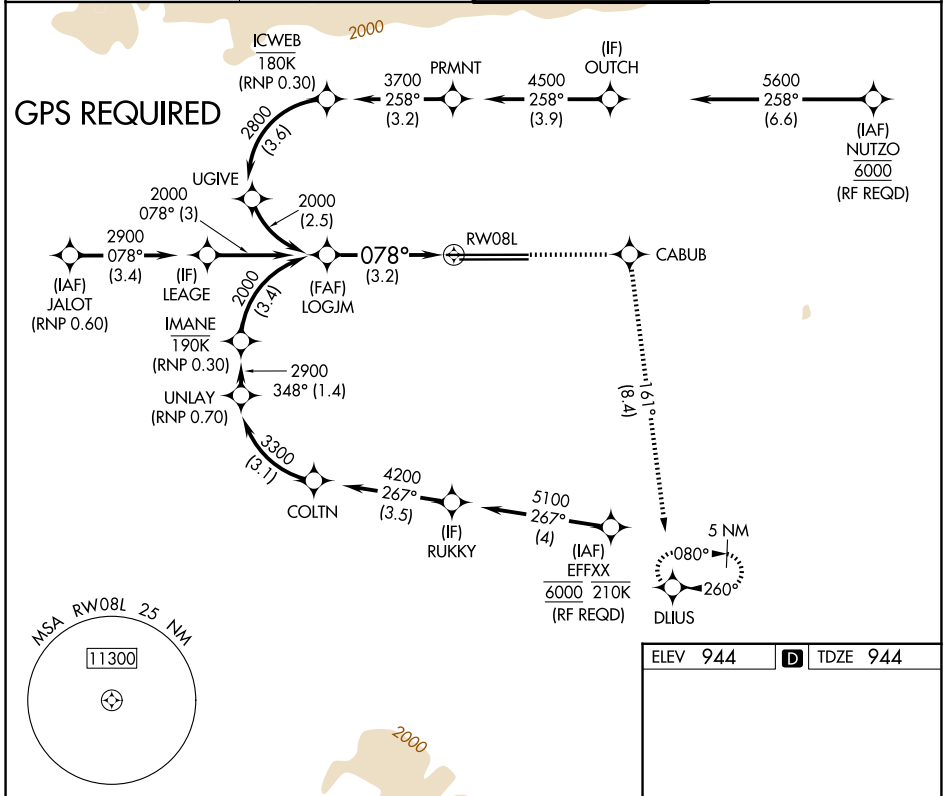
APP CRS	Rwy Ldg	11200
078°	TDZE	944
	Apt Elev	944

RNAV (RNP) Z RWY 8L

ONTARIO INTL (ONT)

	For uncompensated Baro-VNAV systems, procedure NA below 2°C (36°F) or above 54°C (130°F).	MALSR 	MISSED APPROACH: Climb to 5300 direct CABUB on track 161° to DLIUS and hold, continue climb-in-hold to 5300.

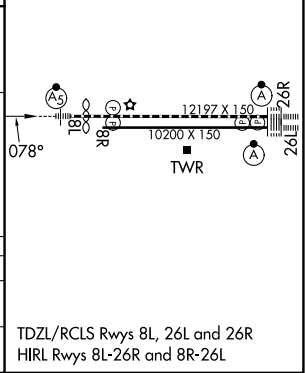
D-ATIS 124.25	SOCAL APP CON 127.0 318.2	ONTARIO TOWER 120.6 360.775	GND CON 121.9 257.8
-------------------------	-------------------------------------	---------------------------------------	-------------------------------



SW-3, 14 MAY 2026 to 11 JUN 2026

SW-3, 14 MAY 2026 to 11 JUN 2026

VGSi and RNAV glidepath not coincident (VGSi Angle 3.00/TCH 62).		5300 CABUB	tr 161°	DLIUS
LOGJM 2000	2000	078°	RWY 8L	
GP 3.00° TCH 45	See planview for multiple IF locations.			
3.2 NM				
CATEGORY	A	B	C	D
RNP 0.30 DA	1490-13 ¹ / ₈ 546 (600-13 ¹ / ₈)			
AUTHORIZATION REQUIRED				



TDZL/RCLS Rwy 8L, 26L and 26R
HIRL Rwy 8L-26R and 8R-26L