

APP CRS	Rwy Ldg	<b>10200</b>
<b>078°</b>	TDZE	<b>936</b>
	Apt Elev	<b>944</b>

# RNAV (RNP) Z RWY 8R

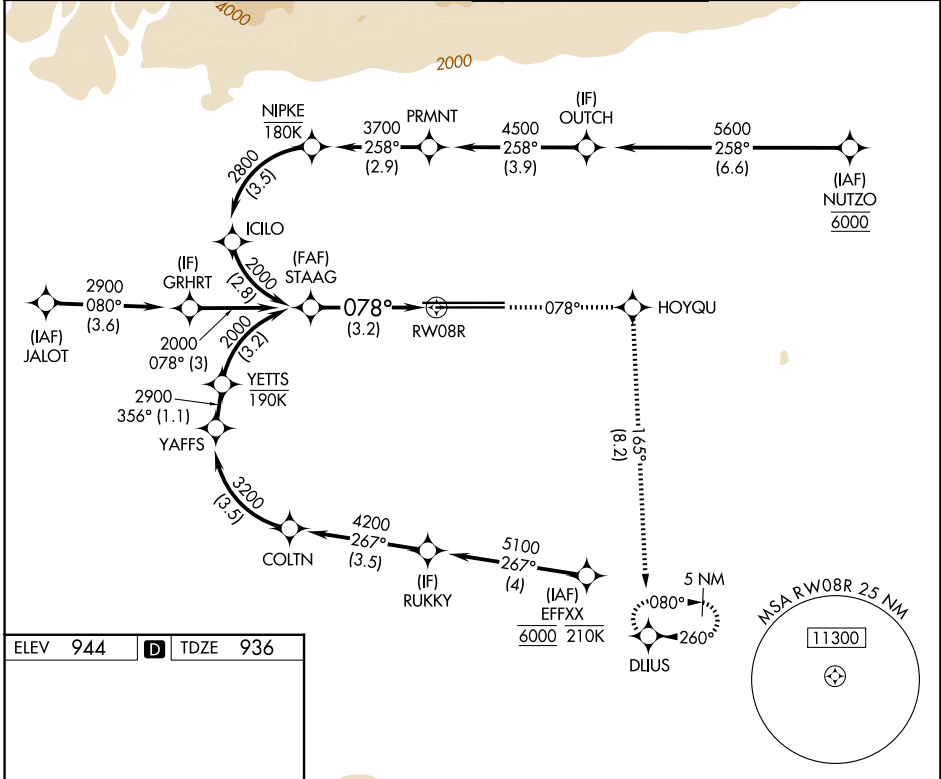
ONTARIO INTL (ONT)

RNP AR APCH - GPS. Authorization required. From JALOT: Min RNP 0.80.  
 From GRHRT: Min RNP 0.50. From NIPKE or ICILO: RF, Min RNP 0.30.  
 From COLTN: RF. From YETTS: RF, Min RNP 0.80.

MISSED APPROACH: Climb to 5300 on track 078° to HOYQU and on track 165° to DLIUS and hold, continue climb-in-hold to 5300.

⚠ For uncompensated Baro-VNAV systems, procedure NA below 2°C or above 54°C.

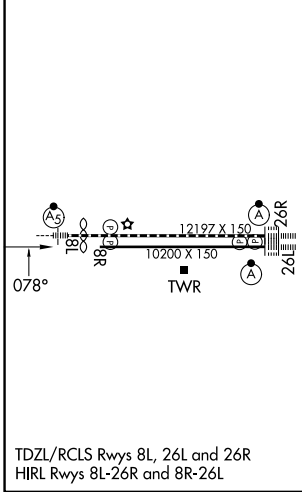
D-ATIS <b>124.25</b>	SOCAL APP CON <b>127.0 318.2</b>	ONTARIO TOWER <b>120.6 360.775</b>	GND CON <b>121.9 257.8</b>
-------------------------	-------------------------------------	---------------------------------------	-------------------------------



SW-3, 14 MAY 2026 to 11 JUN 2026

SW-3, 14 MAY 2026 to 11 JUN 2026

ELEV	<b>944</b>	<b>D</b>	TDZE	<b>936</b>
------	------------	----------	------	------------



VGSI and RNAV glidepath not coincident (VGSI Angle 3.00/TCH 65).

5300 ↑ tr 078°	HOYQU ✦	tr 165°	DLIUS ✦
----------------------	------------	---------	------------

See planview for multiple IF locations.

2000  
078°  
RWY 8R

GP 3.00°  
TCH 60

CATEGORY	A	B	C	D
RNP 0.30 DA		1388-1½	452 (500-1½)	

**AUTHORIZATION REQUIRED**