

# PEVEE SIX DEPARTURE (RNAV)

AI-5023 (FAA)

### TOP ALTITUDE:

**CLEEE and CNERY TRANSITIONS: 17000;**  
**OTATY and TCATE TRANSITIONS: FL200**

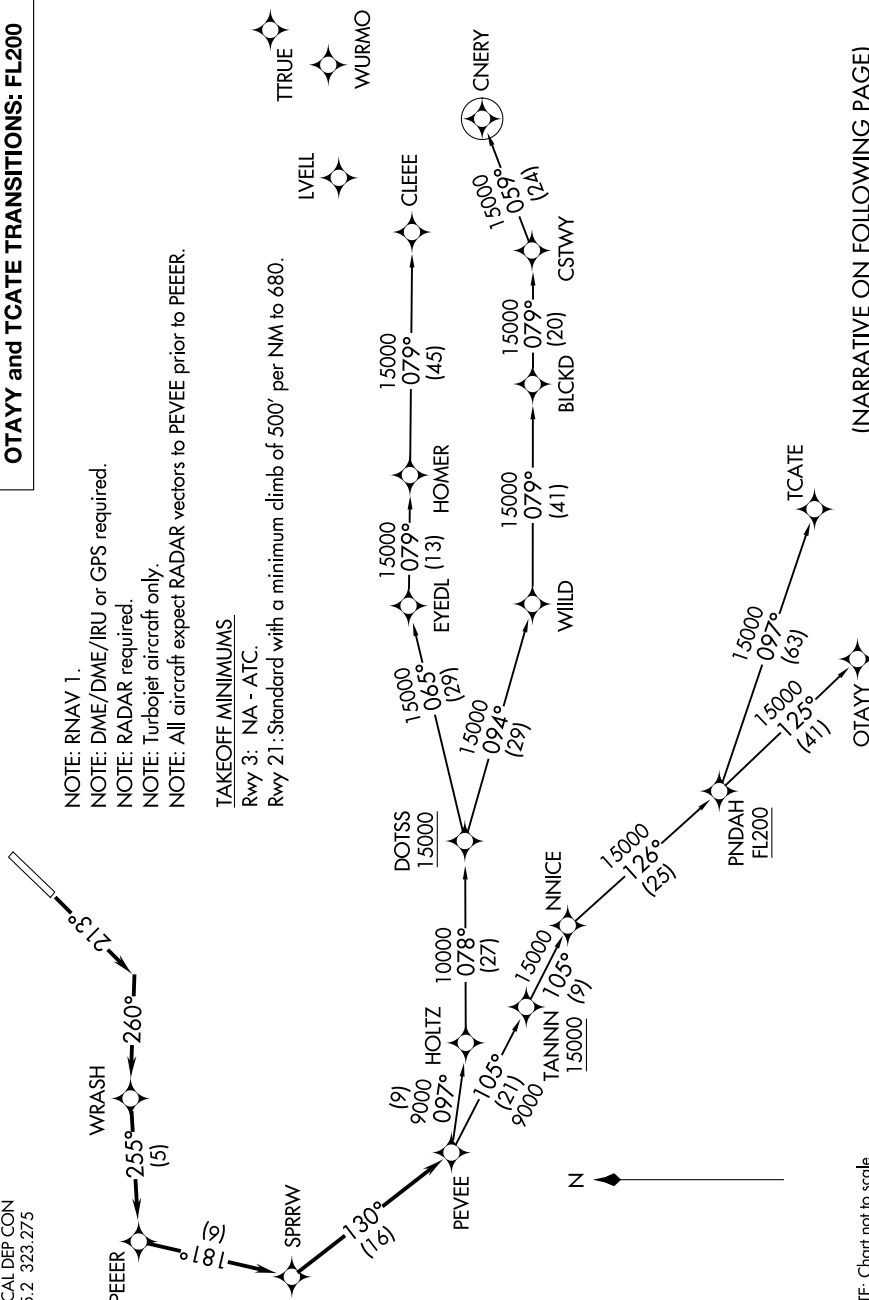
- NOTE: RNAV 1.
- NOTE: DME/DME/IRU or GPS required.
- NOTE: RADAR required.
- NOTE: Turbojet aircraft only.
- NOTE: All aircraft expect RADAR vectors to PEVEE prior to PEEER.

### TAKEOFF MINIMUMS

Rwy 3: NA - ATC.

Rwy 21: Standard with a minimum climb of 500' per NM to 680.

SANTA MONICA TOWER ★  
120.1 257.8  
SOCAL DEP CON  
125.2 323.275



NOTE: Chart not to scale.

(NARRATIVE ON FOLLOWING PAGE)



DEPARTURE ROUTE DESCRIPTION

TAKEOFF RUNWAY 21: Climb on heading 213° to intercept course 260° to WRASH, then on track 255° to PEEER, then on track 181° to SPRRW, then on track 130° to PEVEE, thence. . . .

. . . .on assigned transitions CLEEE and CNERV maintain 17000, OTAYY and TCATE transitions maintain FL200, expect filed altitude 10 minutes after departure.

LOST COMMUNICATIONS: In the event of lost communications, proceed via assigned transition.

CLEEE TRANSITION (PEVEE6.CLEEE)

CNERV TRANSITION (PEVEE6.CNERV)

OTAYY TRANSITION (PEVEE6.OTAYY)

TCATE TRANSITION (PEVEE6.TCATE)

SW-3, 14 MAY 2026 to 11 JUN 2026

SW-3, 14 MAY 2026 to 11 JUN 2026