

SAN CLEMENTE ISLAND, CALIFORNIA

# RNAV (GPS) RWY 24

WAAS CH <b>87812</b> W24A	APCH CRS <b>235°</b>	Rwy ldg TDZE <b>184</b> Arprt Elev <b>184</b>
---------------------------------	-------------------------	---

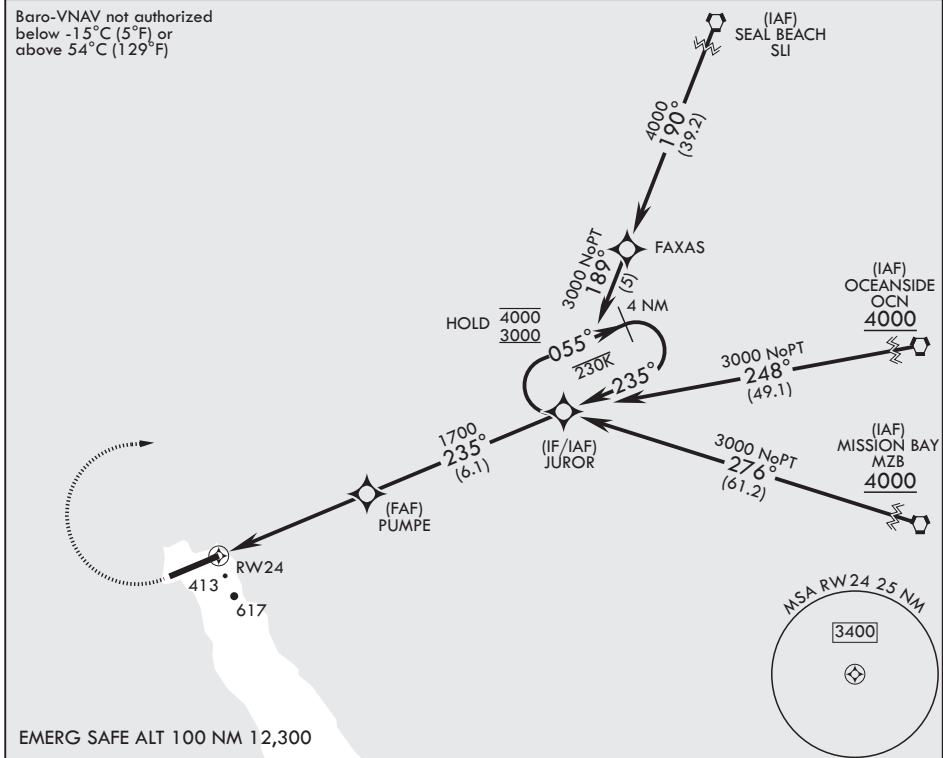
(USN)

SAN CLEMENTE ISLAND NALF (FREDERICK SHERMAN FLD) (KNUC)

RNP APCH-GPS	MISSED APPROACH: Climb to 800, then climbing right turn to 3000 direct JUROR and hold.
--------------	--

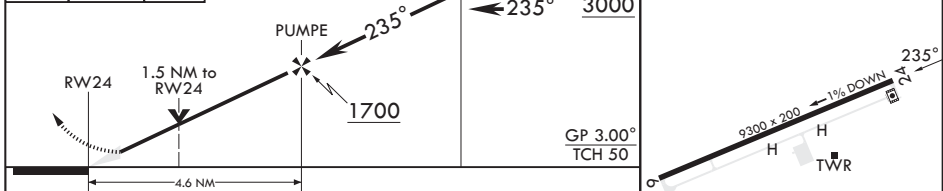
ATIS* <b>268.6</b>	SAN CLEMENTE APP CON <b>127.05 292.15</b>	TOWER* <b>126.75 278.8</b>	GND CON <b>119.55 251.05</b>
-----------------------	--	-------------------------------	---------------------------------

Baro-VNAV not authorized below -15°C (5°F) or above 54°C (129°F)



EMERG SAFE ALT 100 NM 12,300

800	3000	JUROR	ELEV 184	TDZE 184
-----	------	-------	----------	----------



CATEGORY	A	B	C	D
LPV DA	384-3/4		200 (200-3/4)	
LNAV/VNAV DA	622-1 1/4 438 (500-1 1/4)	645-1 3/8 461 (500-1 3/8)	658-1 3/8 474 (500-1 3/8)	676-1 3/8 492 (500-1 3/8)
LNAV MDA	700-1	516 (600-1)	700-1 3/8	516 (600-1 3/8)
CIRCLING*	700-1	516 (600-1)	700-1 1/2 516 (600-1 1/2)	740-2 556 (600-2)

HIRL all rwys  
REIL Rwy 6  
REIL Rwy 24

SAN CLEMENTE ISLAND, CALIFORNIA  
Amdt 6 16APR26

SAN CLEMENTE ISLAND NALF (FREDERICK SHERMAN FLD) (KNUC)  
33°01'N - 118°35'W

# RNAV (GPS) RWY 24

SW-3, 14 MAY 2026 to 11 JUN 2026

SW-3, 14 MAY 2026 to 11 JUN 2026