

SAN CLEMENTE ISLAND, CALIFORNIA

TACAN RWY 24

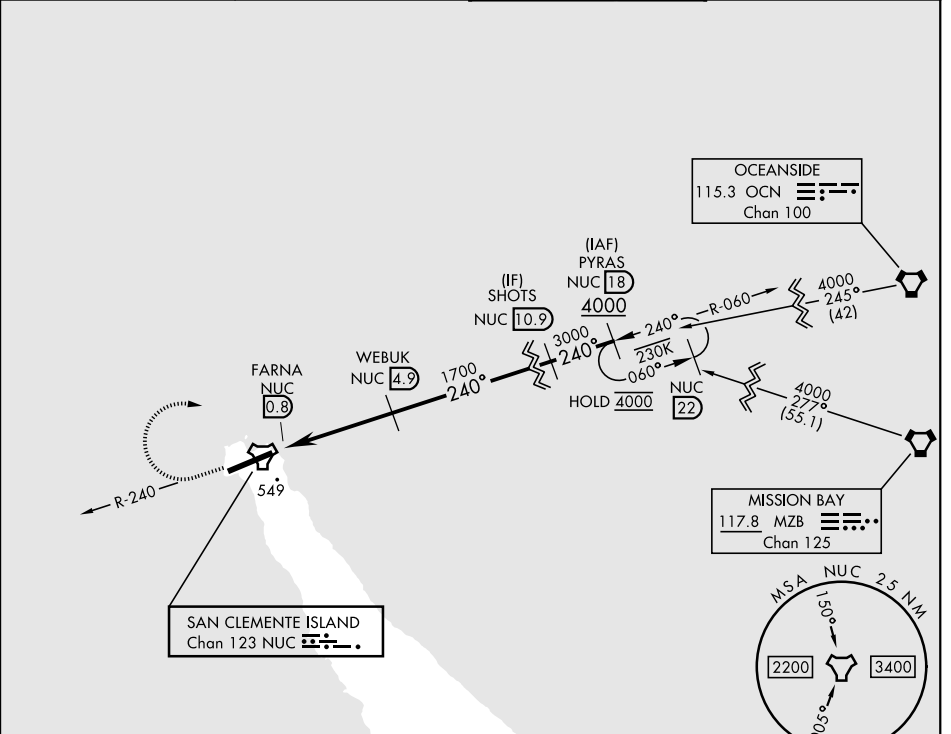
TACAN NUC Chan 123	APCH CRS 240°	Rwy Idg TDZE Arprt Elev 9300 184 184
------------------------------	-------------------------	--

[USN]

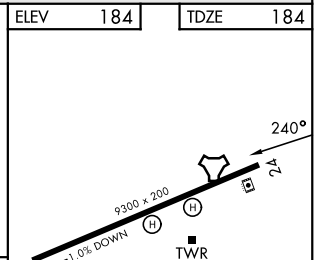
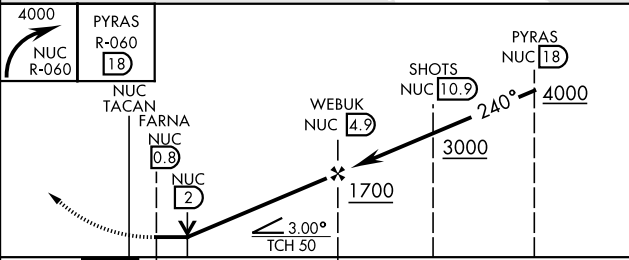
SAN CLEMENTE ISLAND NALF (FREDERICK SHERMAN FLD) (KNUC)

▼ * Circling not authorized SE of Rwy 6-24. MISSED APPROACH: Climbing right turn to 4000 and intercept NUC TACAN R-060 to PYRAS and hold.

ATIS ★ 268.6	APP CON 127.05 292.15	TOWER ★ 126.75 278.8	GND CON 119.550 251.05
------------------------	---------------------------------	--------------------------------	----------------------------------



EMERG SAFE ALT 100 NM 12,300



CATEGORY	A	B	C	D	E
S-24	800-1 616 (700-1)		800-1¾ 616 (700-1¾)	800-2 616 (700-2)	800-2¼ 616 (700-2¼)
CIRCLING*	800-1 616 (700-1)		800-1¾ 616 (700-1¾)	800-2 616 (700-2)	800-2¼ 616 (700-2¼)

ELEV 184 TDZE 184
 REIL Rwy 6
 REIL Rwy 24
 HIRL Rwy 6-24

SAN CLEMENTE ISLAND, CALIFORNIA
 Amdt 2 14MAY26

SAN CLEMENTE ISLAND NALF (FREDERICK SHERMAN FLD) (KNUC)
 33°01'N-118°35'W

TACAN RWY 24

SW-3, 14 MAY 2026 to 11 JUN 2026

SW-3, 14 MAY 2026 to 11 JUN 2026