

# ANAHEIM TWO DEPARTURE

AL-5136 (FAA)

FULLERTON MUNI (F'UL)  
FULLERTON, CALIFORNIA

SW-3, 14 MAY 2026 to 11 JUN 2026

**TOP ALTITUDE:  
2000**

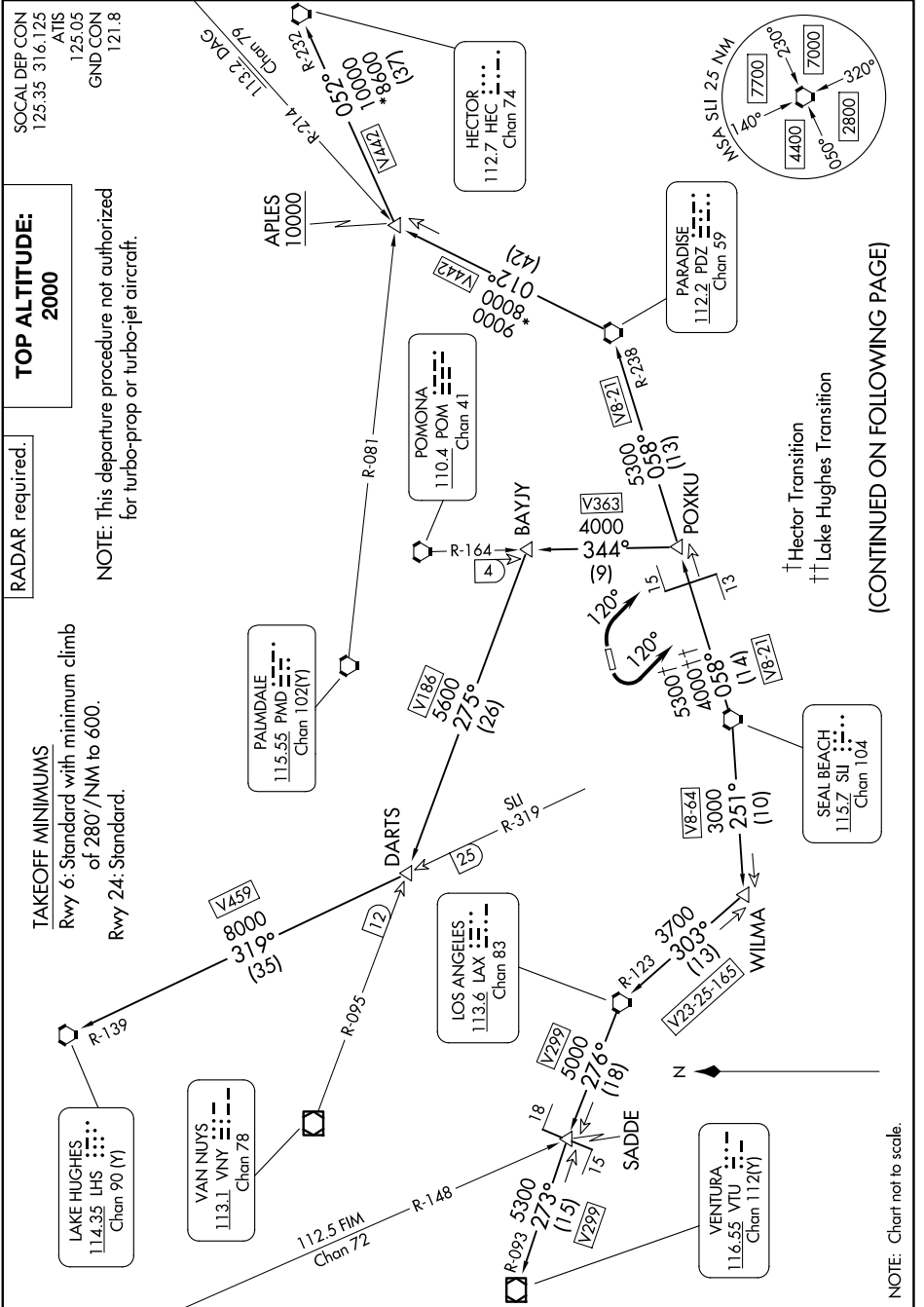
**RADAR required.**

### TAKEOFF MINIMUMS

Rwy 6: Standard with minimum climb of 280'/NM to 600.  
Rwy 24: Standard.

SOCAL DEP CON  
125.35 316,125  
ATIS  
125.05  
GND CON  
121.8

NOTE: This departure procedure not authorized for turbo-prop or turbo-jet aircraft.



(CONTINUED ON FOLLOWING PAGE)

SW-3, 14 MAY 2026 to 11 JUN 2026

# ANAHEIM TWO DEPARTURE

FULLERTON, CALIFORNIA  
FULLERTON MUNI (F'UL)

NOTE: Chart not to scale.



DEPARTURE ROUTE DESCRIPTION

TAKEOFF RUNWAY 6: Turn right heading 120° for vectors to SLI VORTAC, thence. . . .

TAKEOFF RUNWAY 24: Turn left heading 120° for vectors to SLI VORTAC, thence. . . .

. . . .on (transition) or (assigned route) maintain 2000 and expect filed altitude 10 minutes after departure.

HECTOR TRANSITION (ANAHM2.HEC): From over SLI VORTAC on SLI R-058 and PDZ R-238 to PDZ VORTAC, then on PDZ R-012 to APLES, then on HEC R-232 to HEC VORTAC.

LAKE HUGHES TRANSITION (ANAHM2.LHS): From over SLI VORTAC on SLI R-058 and PDZ R-238 to POXKU, then on POM R-164 to BAYJY, then on VNY R-095 to DARTS, then on LHS R-139 to LHS VORTAC.

VENTURA TRANSITION (ANAHM2.VTU): From over SLI VORTAC on SLI R-251 to WILMA, then on LAX R-123 to LAX VORTAC, then on LAX R-276 to SADDE, then on VTU R-093 to VTU VOR/DME.

SW-3, 14 MAY 2026 to 11 JUN 2026

SW-3, 14 MAY 2026 to 11 JUN 2026