

|  |                        |                             |   |
|--|------------------------|-----------------------------|---|
| WAAS<br>CH <b>45934</b><br><b>W06A</b> | APP CRS<br><b>054°</b> | Rwy Ldg<br>TDZE<br>Apt Elev | <b>3757</b><br><b>1430</b><br><b>1444</b> |
|--|------------------------|-----------------------------|---|

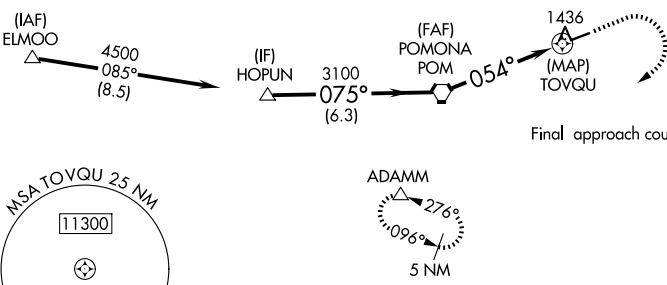
# RNAV (GPS) RWY 6

CABLE (CCB)

|   |                                     |  |
|---|-------------------------------------|--|
| RNP APCH.   |                                     | MISSED APPROACH: Climb to 1900 then climbing right turn to 5500 direct ADAMM and hold, continue climb-in-hold to 5500. |
| <p><b>NA</b> Circling NA northwest of Rwy 6-24. Rwy 6 helicopter visibility reduction below 3/4 SM NA. Circling Rwy 24 NA at night. When local altimeter setting not received, use Ontario altimeter setting and increase all MDA 100 feet.</p> |                                     |  |
| AWOS-3P<br><b>119.525</b>   | SOCAL APP CON<br><b>125.5 349.0</b> | UNICOM<br><b>123.0 (CTAF) 1</b>  |



Procedure NA for arrivals at ELMOO on V186 westbound.



SW-3, 14 MAY 2026 to 11 JUN 2026

SW-3, 14 MAY 2026 to 11 JUN 2026

|   |        |                 |                               |
|---|--------|-----------------|-------------------------------|
|   |        | ELEV 1444       | TDZE 1430                     |
| <p>VGSI and descent angles not coincident (VGSI Angle 4.00/TCH 34).</p> |        | 1900            | 5500                          |
| <p>HOPUN</p>  |        | ADAMM           | △                             |
| <p>4500</p>   |        |                 |                               |
| <p>075°</p>   |        | <p>054°</p>     |                               |
| <p>3100</p>   |        | <p>054°</p>     |                               |
| <p>6.3 NM</p>   |        | <p>4.7 NM</p>   |                               |
| <p>0.4</p>  |        | <p>0.4</p>      |                               |
| CATEGORY  | A      | B               | C                             |
| LP MDA  | 1780-1 | 350 (400-1)     | 1780-1 1/8<br>350 (400-1 1/8) |
| LNAV MDA  | 1940-1 | 510 (500-1)     | 1940-1 1/8<br>510 (500-1 1/8) |
| CIRCLING  | 2020-1 | 576 (600-1)     | 2140-2<br>696 (700-2)         |
|   |        | D               |                               |
|   |        | NA              |                               |
|   |        | NA              |                               |
|   |        | NA              |                               |
|   |        | MIRL Rwy 6-24 1 |                               |