

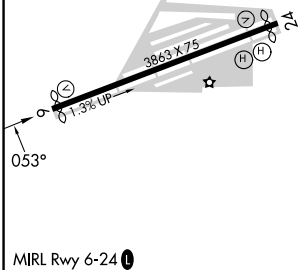
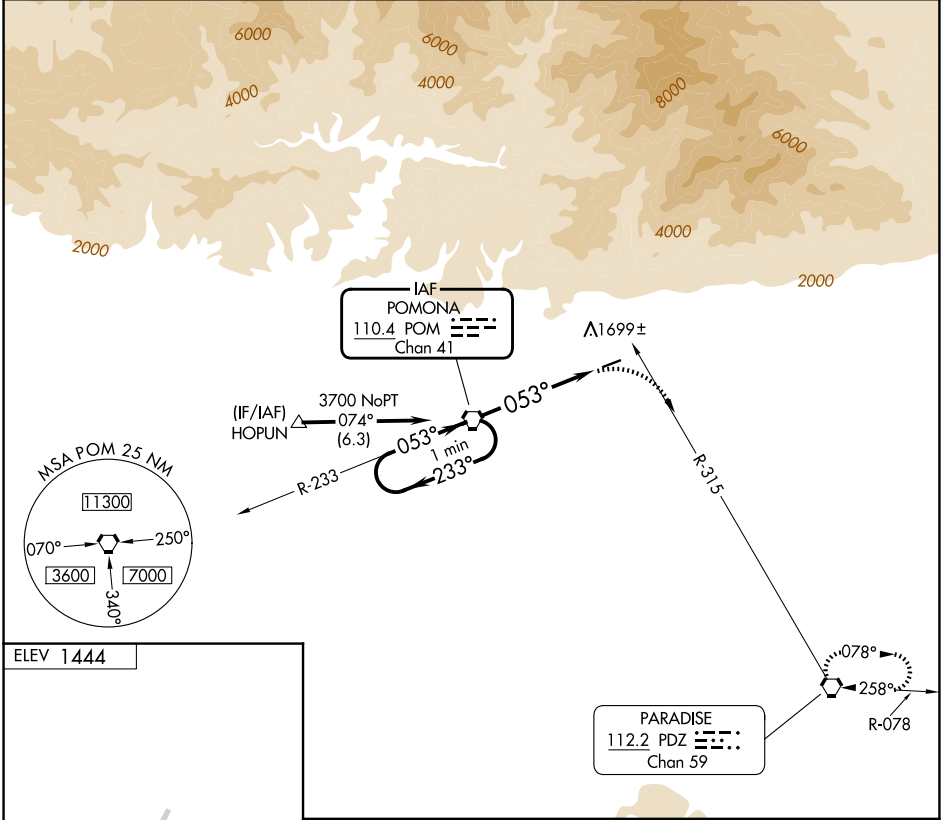
VORTAC POM 110.4 Chan 41	APP CRS 053°	Rwy Ldg TDZE Apt Elev 1444	N/A N/A
---------------------------------------	------------------------	-----------------------------------------	--------------------------

VOR-A
CABLE (CCB)

NA Circling NA northwest of Rwy 6-24. Procedure NA at night. When local altimeter setting not received, use Ontario altimeter setting and increase all MDA 100 feet and all visibilities ½ SM. Rwy 24 helicopter visibility reduction below 1 SM NA.

MISSED APPROACH: Climbing right turn to 4000 via heading 105° and PDZ R-315 to PDZ VORTAC and hold.

AWOS-3P 119.525	SOCAL APP CON 125.5 349.0	UNICOM 123.0 (CTAF) 0
---------------------------	-------------------------------------	---------------------------------



One Minute Holding Pattern	VGSI and descent angles not coincident (VGSI Angle 4.00/TCH 34).			4000	PDZ R-315	PDZ
	POM VORTAC			hdg 105°		
3700 ← 233°		→ 053°		POM (5.1)		
		4.22° TCH 40				
		5.1 NM				

FAF to MAP 5.1 NM					
Knots	60	90	120	150	180
Min:Sec	5:06	3:24	2:33	2:02	1:42
CATEGORY	A	B	C	D	
CIRCLING	2240-1	796 (800-1)	2240-2¼ 796 (800-2¼)	NA	

SW-3, 14 MAY 2026 to 11 JUN 2026

SW-3, 14 MAY 2026 to 11 JUN 2026