

LOC I-POC 110.5	APP CRS 259°	Rwy Ldg TDZE 4151 1005	Apt Elev 1014
---------------------------	------------------------	--	-------------------------

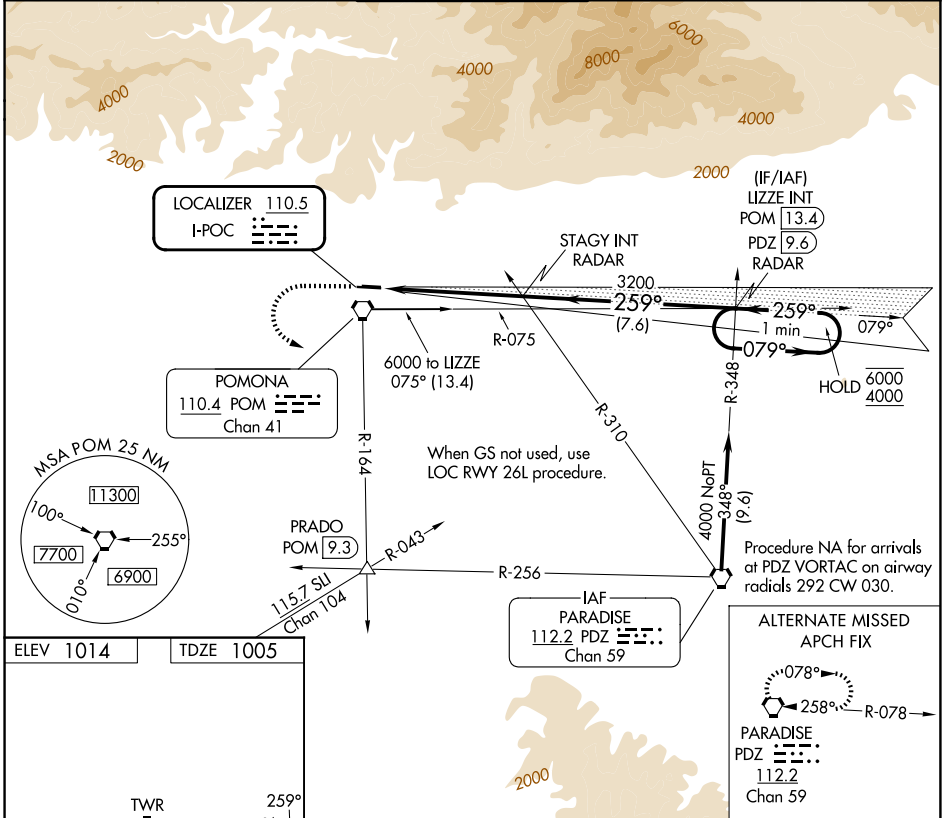
ILS RWY 26L

BRACKETT FLD (POC)

▼ Rwy 26L helicopter visibility reduction below 3/4 SM NA.
▲ When local altimeter setting not received, use Ontario Intl altimeter setting and increase DA to 1364.

MISSED APPROACH: Climb to 2100 then climbing left turn to 4000 on POM VORTAC R-164 to PRADO INT/POM 9.3 DME.

ATIS 124.4	SOCAL APP CON 125.5 349.0	BRACKETT TOWER* 118.2 (CTAF) (8R/26L) 133.3 (8L/26R)	GND CON 125.0	UNICOM 122.95
----------------------	-------------------------------------	--	-------------------------	-------------------------



SW-3, 14 MAY 2026 to 11 JUN 2026

SW-3, 14 MAY 2026 to 11 JUN 2026

ELEV 1014	TDZE 1005
-----------	-----------

REIL Rws 8R and 26L
MIRL Rwy 8R-26L

2100	4000	PRADO	VGSI and ILS glidepath not coincident (VGSI Angle 3.76/TCH 18).
↑	POM R-164	△	LIZZE INT PDZ 9.6 RADAR
STAGY INT RADAR		One Minute Holding Pattern	
3200		079° → 6000	
5.2 NM		← 259° 4000	
3200		*at DTHR; 60 at Rwy end.	
7.6 NM		GS 3.92°	
		*TCH 20	
CATEGORY	A	B	C
S-ILS 26L	1332-1	327 (400-1)	NA