

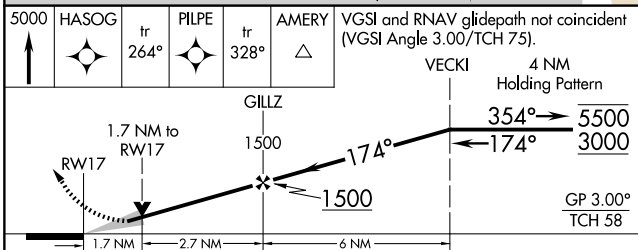
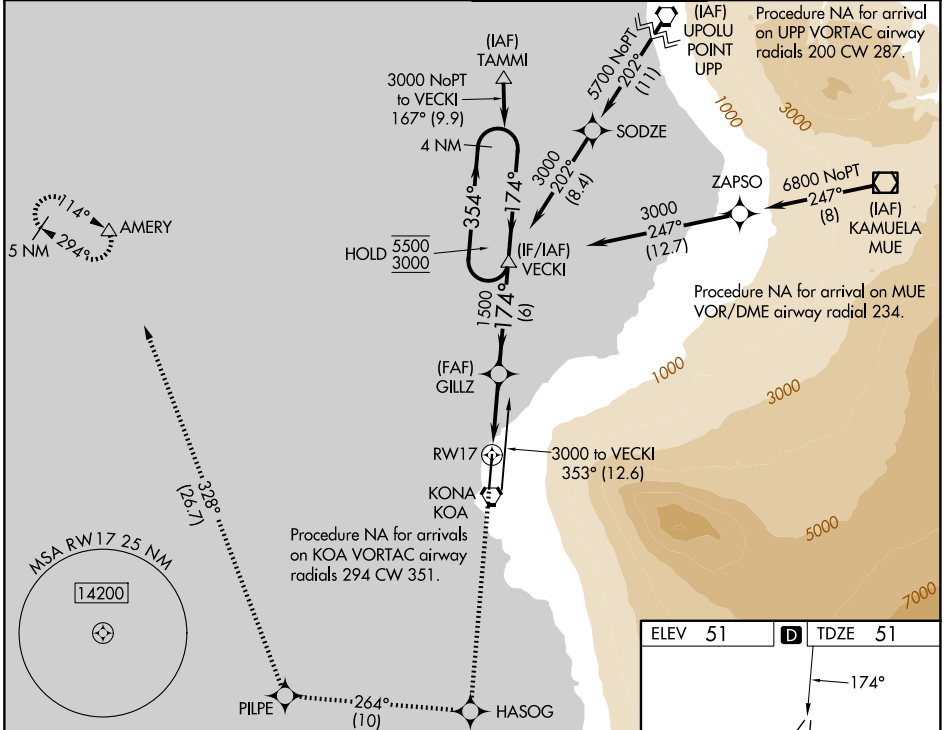
APP CRS	Rwy Ldg	<b>11000</b>
<b>174°</b>	TDZE	<b>51</b>
	Apt Elev	<b>51</b>

# RNAV (GPS) Y RWY 17

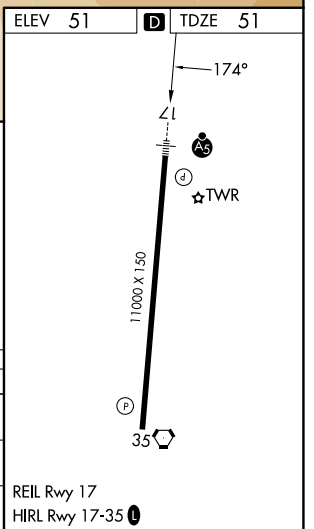
ELLISON ONIZUKA KONA INTL AT KEAHOLE (KOA) (PHKO)

RNP APCH - GPS.	MALSRL	MISSED APPROACH: Climb to 5000 direct HASOG and on track 264° to PILPE and on track 328° to AMERY and hold.
<p><b>⚠</b> Circling NA east of Rwy 17-35. WAAS VNAV NA. For uncompensated Baro-VNAV systems, LNAV/VNAV NA below -5°C or above 54°C. For inop ALS, increase LNAV/VNAV all Cats visibility to 1½ SM and increase LNAV Cat C &amp; D visibility to 1¾ SM.</p>		

ATIS <b>127.4</b>	HCF CENTER <b>118.45 278.3</b>	KONA TOWER* <b>120.3 (CTAF) 0 254.3</b>	GND CON <b>121.9</b>
----------------------	-----------------------------------	--	-------------------------



CATEGORY	A	B	C	D
LNAV/VNAV DA	544-1 493 (500-1)			
LNAV MDA	660-½ 609 (700-½)	660-1¾ 609 (700-1¾)		
CIRCLING	660-1 609 (700-1)	660-1¾ 609 (700-1¾)	660-2 609 (700-2)	



PAC, 14 MAY 2026 to 09 JUL 2026

PAC, 14 MAY 2026 to 09 JUL 2026