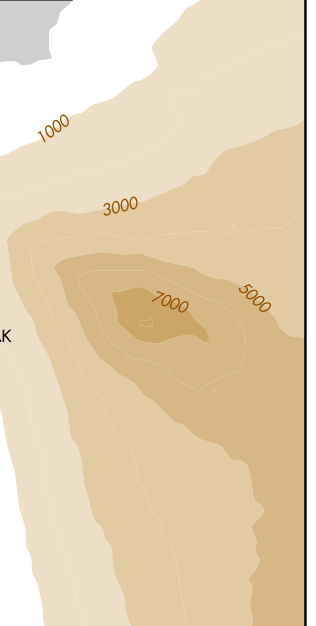
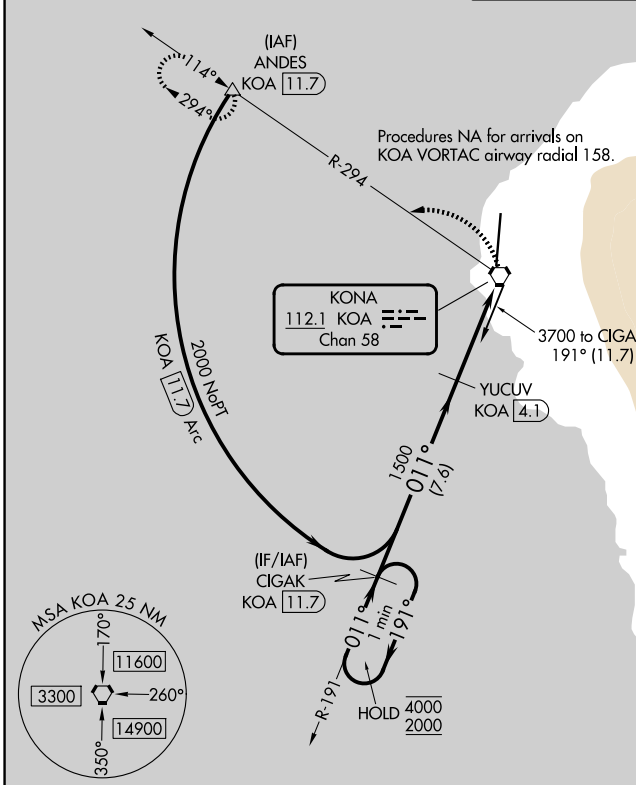


VORTAC KOA 112.1 Chan 58	APP CRS 011°	Rwy Ldg 11000 TDZE 40 Apt Elev 51
---------------------------------------	------------------------	--

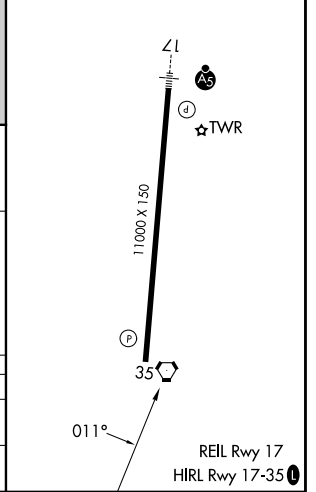
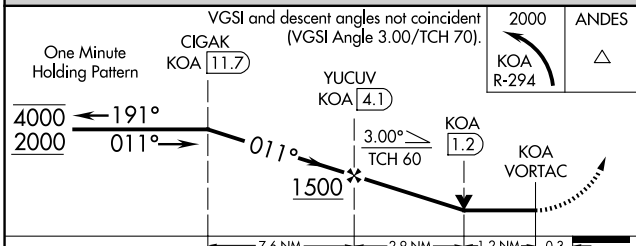
VOR or TACAN RWY 35

ELLISON ONIZUKA KONA INTL AT KEAHOLE (KOA) (PHKO)

DME required.		MISSED APPROACH: Climbing left turn to 2000 on KOA VORTAC R-294 to ANDES/KOA 11.7 DME and hold.	
⚠ Circling NA east of Rwy 17-35.			
ATIS 127.4	HCF CENTER 118.45 278.3	KONA TOWER★ 120.3 (CTAF) 0 254.3	GND CON 121.9



ELEV 51	TDZE 40
---------	---------



CATEGORY	A	B	C	D	E
S-35	600-1	560 (600-1)	600-1½	560 (600-1½)	
CIRCLING	600-1	549 (600-1)	600-1½ 549 (600-1½)	620-2	569 (600-2)