

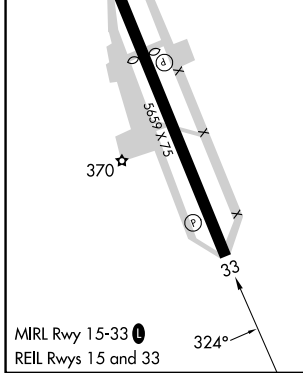
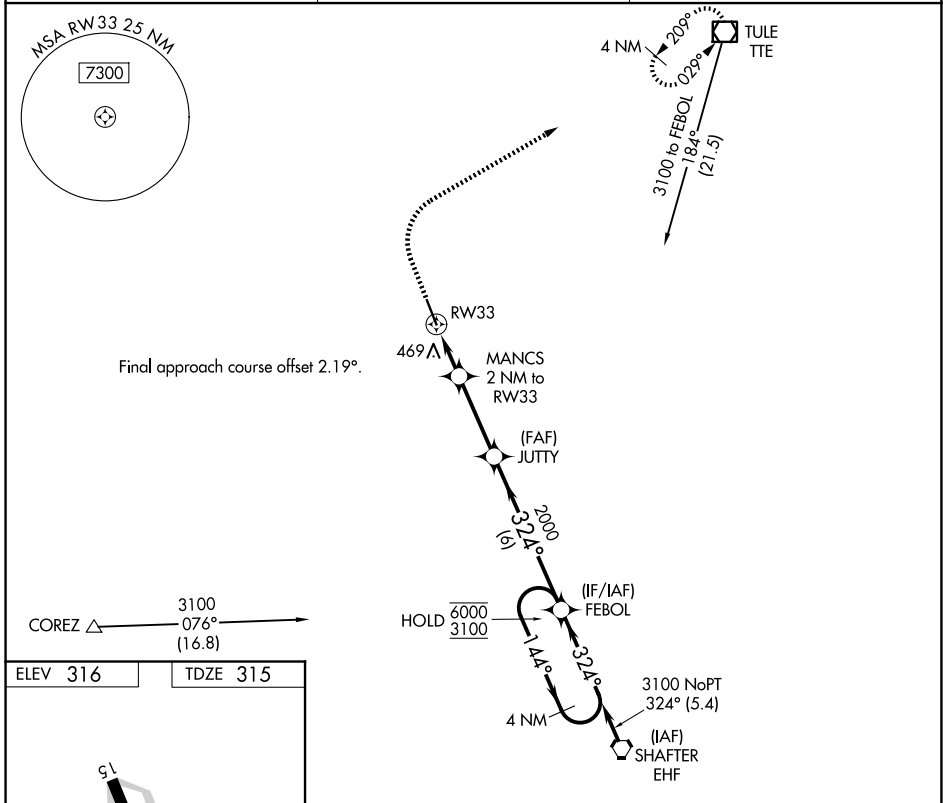
APP CRS 324°	Rwy Ldg 5659
TDZE 315	Apt Elev 316

RNAV (GPS) RWY 33

DELANO MUNI (DLO)

RNP APCH - GPS.	MISSED APPROACH: Climb to 800 then climbing right turn to 3100 direct TTE VOR/DME and hold.
<p>⚠ Circling NA southwest of Rwy 15-33.</p> <p>⚠ When local altimeter setting not received, procedure NA.</p>	

AWOS-3P 119.55	BAKERSFIELD APP CON ★ 118.9	UNICOM 122.8 (CTAF)
--------------------------	---------------------------------------	-------------------------------



800	3100	TTE	VGSi and descent angles not coincident (VGSi Angle 3.00/TCH 26).	
↑	↷	☐	MANCS 2 NM to RW33	JUTTY FEBOL 4 NM Holding Pattern
RW33 1.2 NM to RW33		1000	2000	6000 3100
1.2 NM		0.9 NM	3.1 NM	6 NM
CATEGORY	A	B	C	D
LNAV MDA	720-1	405 (500-1)	720-1½	405 (500-1½)
CIRCLING	760-1	780-1	820-1½	960-2
	444 (500-1)	464 (500-1)	504 (600-1½)	644 (700-2)

SW-3, 14 MAY 2026 to 11 JUN 2026

SW-3, 14 MAY 2026 to 11 JUN 2026