

APP CRS	Rwy Ldg	N/A
239°	TDZE	N/A
	Apt Elev	1395

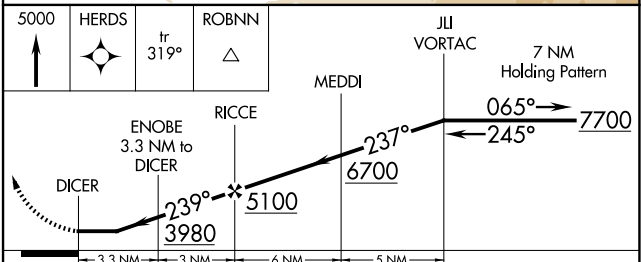
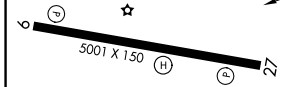
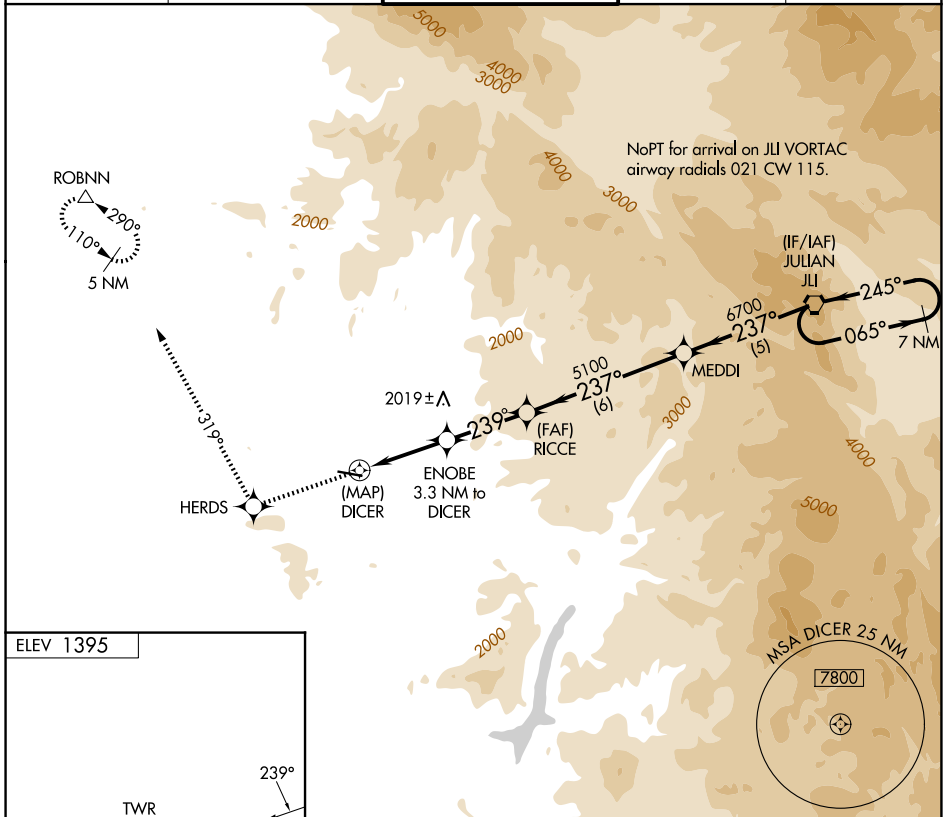
RNAV (GPS)-B

RAMONA (R.NM)

⚠ DME/DME RNP-0.3 NA.
⚠ Circling NA north of Rwy 9-27.
 When local altimeter setting not received, use Gillespie Fld altimeter setting and increase all MDA 180 feet.

MISSED APPROACH: Climb to 5000 direct HERDS and via track 319° to ROBNN and hold.

ATIS 132.025	SOCAL APP CON 132.2 269.1	RAMONA TOWER ★ 119.875 (CTAF) ①	GND CON 121.65	UNICOM 122.95
------------------------	-------------------------------------	--	--------------------------	-------------------------



REIL Rwy 27 ①	MIRL Rwy 9-27 ①			
CATEGORY	A	B	C	D
CIRCLING	2780-1¼ 1385 (1400-1¼)	2780-1½ 1385 (1400-1½)	3180-3 1785 (1800-3)	NA

SW-3, 14 MAY 2026 to 11 JUN 2026

SW-3, 14 MAY 2026 to 11 JUN 2026