

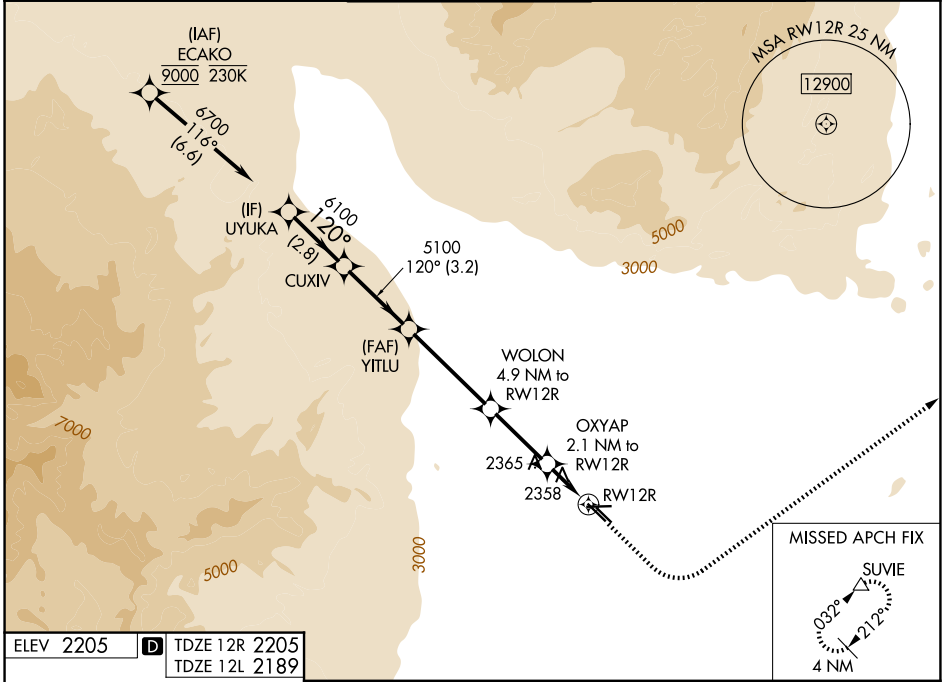
WAAS CH 69443 W12A	APP CRS 120°	Rwy Ldg TDZE Apt Elev	12R 5000 2205 2205	12L 4199 2189 2205
--	------------------------	-----------------------------	--	--

RNAV (GPS) RWY 12R

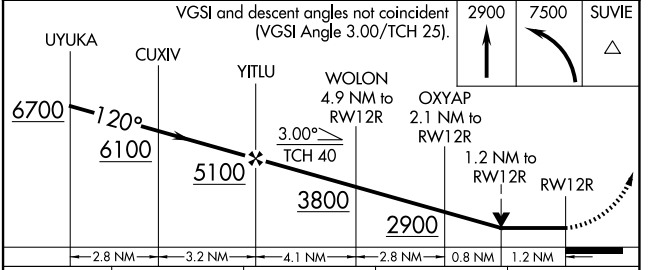
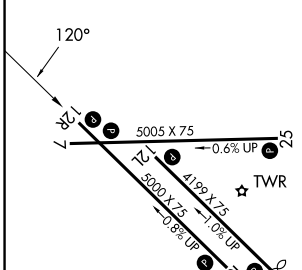
NORTH LAS VEGAS (VGT)

RNP APCH - GPS.		MISSED APPROACH: Climb to 2900 then climbing left turn to 7500 direct SUVIE and hold, continue climb-in-hold to 7500.		
Rwy 12R helicopter visibility reduction below 3/4 SM NA.				

ATIS 118.05	LAS VEGAS APP CON 119.4 360.85	NORTH LAS VEGAS TOWER* 125.7 (CTAF) 360.75	GND CON 121.7	UNICOM 122.95
-----------------------	--	--	-------------------------	-------------------------



ELEV 2205	D	TDZE 12R 2205	TDZE 12L 2189
-----------	----------	---------------	---------------



	CATEGORY	A	B	C	D
LP	MDA	2620-1	415 (500-1)	2620-1 1/8	415 (500-1 1/8)
LNAV	MDA	2820-1	615 (700-1)	2820-1 3/4	615 (700-1 3/4)
SIDESTEP	12L	2820-1	631 (700-1)	2820-1 3/4	2820-2 631 (700-2)
CIRCLING		2820-1	615 (700-1)	2840-1 3/4 635 (700-1 3/4)	3540-3 1335 (1400-3)

REIL all rwys **1**
MIRL all rwys **1**

SW-4, 14 MAY 2026 to 11 JUN 2026

SW-4, 14 MAY 2026 to 11 JUN 2026