

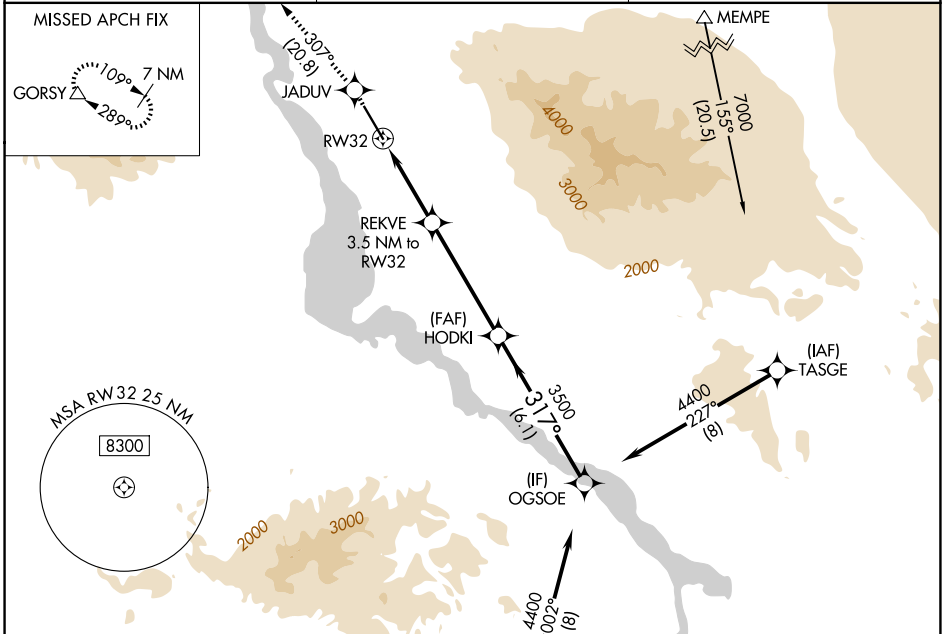
WAAS CH 49110 W32A	APP CRS 317°	Rwy Ldg TDZE Apt Elev	8000 783 783
--	------------------------	-----------------------------	---

RNAV (GPS) RWY 32

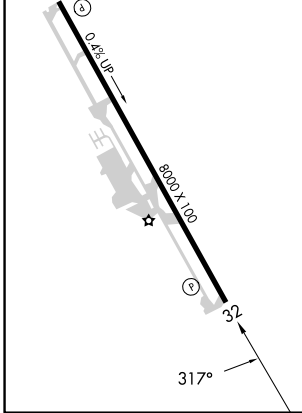
LAKE HAVASU CITY (HII)

RNP APCH.	MISSED APPROACH: Climb to 6300 direct JADUV and track 307° to GORSY and hold, continue climb-in-hold to 6300.
<p>▼ Circling NA northeast of Rwy 14-32.</p> <p>▲ Rwy 32 helicopter visibility reduction below ¾ SM NA.</p>	

AWOS-3 119.025	LOS ANGELES CENTER 134.65 360.65	UNICOM 122.7 (CTAF) 0
--------------------------	--	---------------------------------



ELEV 783	TDZE 783
REIL Rws 14 and 32	MIRL Rwy 14-32



6300	JADUV	tr 307°	GORSY	VGSI and RNAV glidepath not coincident (VGSI Angle 3.00/TCH 36).	OGSOE
*LNAV only.			REKVE 3.5 NM to RW32	HODKI 3500	4400
			*2.6 NM to RW32	3500	GP 3.00° TCH 50
			1940*		
	-2.6 NM	0.9	4.7 NM	6.1 NM	

CATEGORY	A	B	C	D
LPV DA	1265-1 3/8 482 (500-1 3/8)			
LNAV MDA	1660-1 877 (900-1)	1660-1 1/4 877 (900-1 1/4)	1660-2 1/2 877 (900-2 1/2)	877 (900-2 1/2)
CIRCLING	1660-1 1/4 877 (900-1 1/4)		1800-3 1017 (1100-3)	2180-3 1397 (1400-3)

SW-4, 14 MAY 2026 to 11 JUN 2026

SW-4, 14 MAY 2026 to 11 JUN 2026