

| | | | |
|---|------------------------|-----------------------------|---|
| VORTAC EHF 115.4 Chan 101 | APP CRS 319° | Rwy Ldg TDZE Apt Elev | 4000 377 378 |
|---|------------------------|-----------------------------|---|

VOR/DME RWY 34

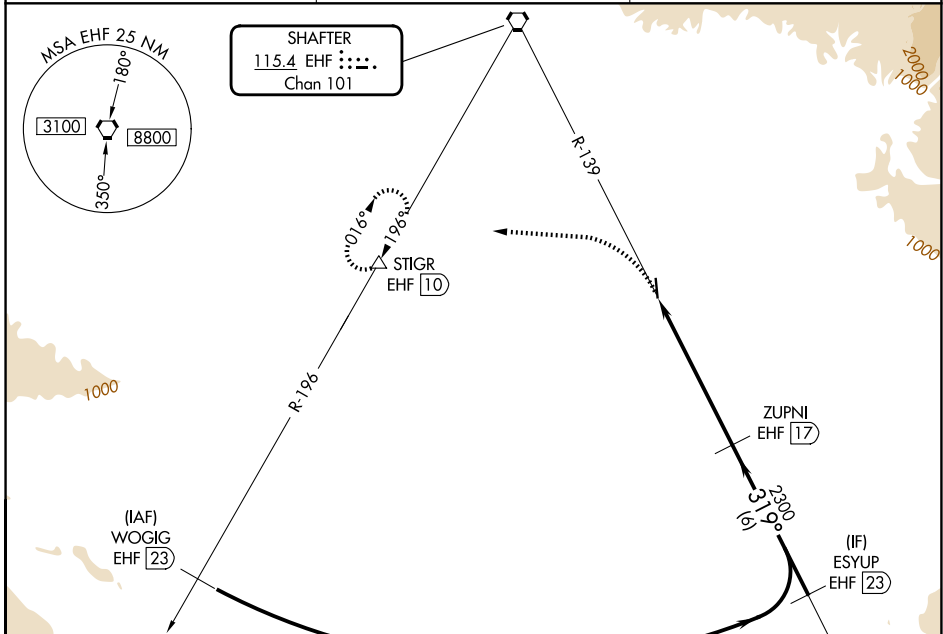
BAKERSFIELD MUNI (L45)

⚠ Use Meadows fld altimeter setting. When Meadows fld altimeter setting not received, use Porterville altimeter setting and increase all MDA 80 feet, increase S-34 and Circling Cat C and D visibility ¼ mile. Visibility reduction by helicopters below ¾ SM NA. Night Landing Rwy 16 NA.

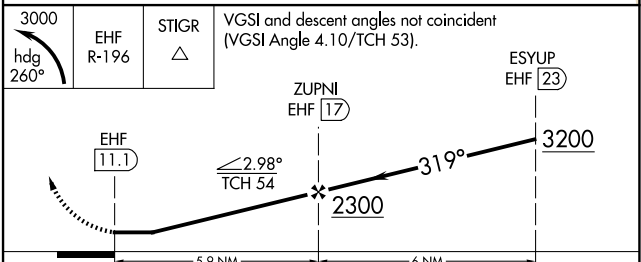
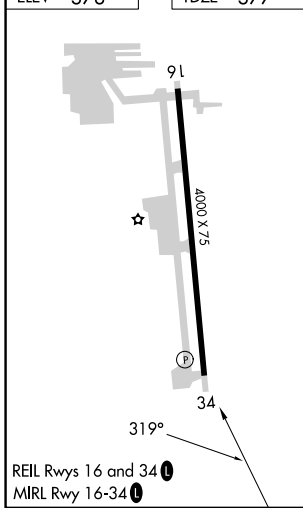
⚠ NA

MISSED APPROACH: Climbing left turn to 3000 on heading 260° to EHF R-196 to STIGR/EHF 10 DME and hold, continue climb-in-hold to 3000.

| | | |
|--------------------------|---|---------------------------------|
| BFL ASOS 118.6 | BAKERSFIELD APP CON★ 126.45 270.3 | UNICOM 122.8 (CTAF) 0 |
|--------------------------|---|---------------------------------|



| | |
|----------|----------|
| ELEV 378 | TDZE 377 |
|----------|----------|



| CATEGORY | A | B | C | D |
|----------|--------|-------------|-------------------------|-------------------------|
| S-34 | 900-1 | 523 (600-1) | 900-1½ | 523 (600-1½) |
| CIRCLING | 1060-1 | 682 (700-1) | 1120-2¼ 742 (800-2¼) | 1120-2½ 742 (800-2½) |

SW-3, 14 MAY 2026 to 11 JUN 2026

SW-3, 14 MAY 2026 to 11 JUN 2026